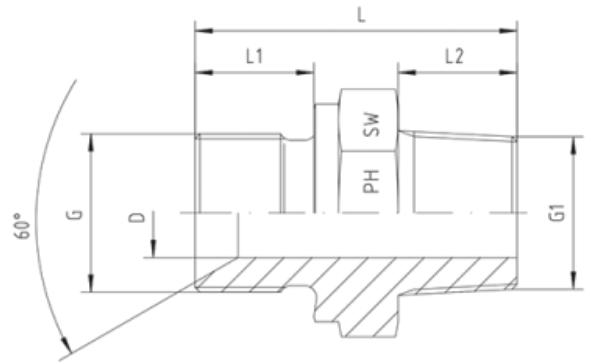


Rubrik 5.6

BSP - Parallel - BSP - Taper



BSP - Male with 60°-Cone

BSP - Taper - Male

Other sizes on request!

Pressure	Thread		Approx. Dimensions					Order-Code	Gross-Price (€)	
	PN	G = BSP	G1 = BSPT	L	L1	L2	D			SW
Series A										
400		1/8"-28	1/8"-28	23,0	8	8	4,0	14	1050710-02-02	6,00
400		1/4"-19	1/4"-19	30,0	10	12	6,0	19	1050710-04-04	5,37
400		3/8"-19	3/8"-19	32,5	12	12	9,0	22	1050710-06-06	6,75
400		1/2"-14	1/2"-14	37,0	14	14	12,5	27	1050710-08-08	9,18
400		3/4"-14	3/4"-14	47,0	16	19	17,5	32	1050710-12-12	12,45
400		1"-11	1"-11	49,0	18	18	22,0	41	1050710-16-16	19,40
200		1 1/4"-11	1 1/4"-11	54,5	20	20	29,0	50	1050710-20-20	36,00
200		1 1/2"-11	1 1/2"-11	58,5	22	22	37,0	55	1050710-24-24	51,85
100		2"-11	2"-11	66,0	25	26	45,0	70	1050710-32-32	99,00
Series B										
400		1/4"-19	1/8"-28	26,0	10	8	4,0	19	1050710-04-02	6,95
400		1/4"-19	3/8"-19	32,0	10	12	7,0	19	1050710-04-06	8,45
400		1/4"-19	1/2"-14	34,0	10	14	6,0	22	1050710-04-08	10,35
400		3/8"-19	1/4"-19	33,0	12	12	7,0	22	1050710-06-04	8,45

400	3/8"-19	1/2"-14	42,0	12	19	9,0	22	1050710-06-08	10,30
400	1/2"-14	3/8"-19	37,0	14	12	9,0	27	1050710-08-06	10,30
400	1/2"-14	3/4"-14	45,0	14	19	12,5	27	1050710-08-12	15,65
400	3/4"-14	1/2"-14	45,0	16	19	12,5	32	1050710-12-08	15,95
400	3/4"-14	1"-14	45,0	16	18	17,5	36	1050710-12-16	19,50