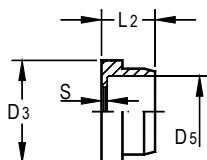


## 9B

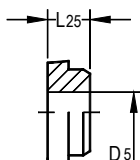
### Bussola a Brasare Brazed Sleeve



Codice Code	∅ est. tubo Tube O.D.	D <sub>3</sub>	D <sub>5</sub>	L <sub>2</sub>	S
9B-06	6	12,75	6	9,5	1
9B-08	8	15,75	8	9,5	1
9B-10	10	15,75	10	9,5	1
9B-12	12	18,9	12	9,5	1
9B-14	14	23,45	14	10,5	1,5
9B-16	16	23,45	16	10,5	1,5
9B-18	18	27,85	18	14	1,5
9B-20	20	27,85	20	14	1,5
9B-25	25	34,2	25	15,5	1,5
9B-30	30	40,55	30	15,5	1,5
9B-32	32	40,55	32	15,5	1,5
9B-38	38	48,5	38	15,5	1,5

## 9BM

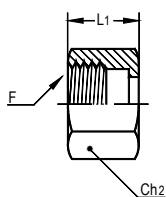
### Bussola Sleeve



Codice Code	∅ est. tubo Tube O.D.	D <sub>5</sub>	L <sub>25</sub>
9BM-06	6	6	8,5
9BM-08	8	8	9,5
9BM-10	10	10	9,5
9BM-12	12	12	11,5
9BM-14	14	14	11,5
9BM-16	16	16	11,5
9BM-18	18	18	13
9BM-20	20	20	13
9BM-25	25	25	14,5
9BM-30	30	30	14
9BM-32	32	32	14
9BM-38	38	38	13,5

## 9J

### Dado Nut



Codice Code	∅ est. tubo Tube O.D.	F (ORFS)	Ch <sub>2</sub>	L <sub>1</sub>
9J-06	6	9/16"-18	19	15
9J-10	8-10	11/16"-16	22	17
9J-12	12	13/16"-16	24	20
9J-16	14+16	1"-14	30	24
9J-20	18-20	1.3/16"-12	36	26,5
9J-25	25	1.7/16"-12	41	27,5
9J-32	30-32	1.11/16"-12	50	27,5
9J-38	38	2"-12	60	27,5