

VALVOLE DI RITEGNO PILOTATE

DOBBIE

(esecuzione a otturatore)

DOUBLE PILOT OPERATED CHECK VALVES

(with poppet)

CLAPETS ANTI-RETOUR DOUBLES PILOTES

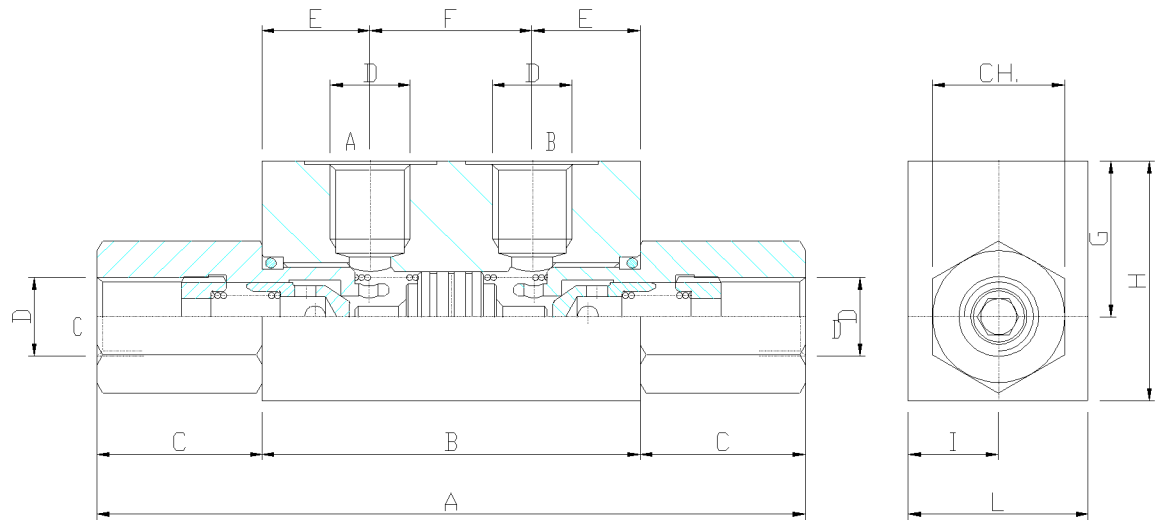
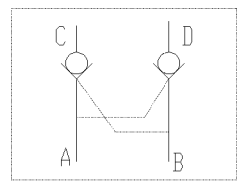
(exécution à cône)

DOPPELT ENTSPERRBARE RÜCKSCHLAGVENTILE

(ausführung mit kegel)

BP2/7

BP2/710



CODICE TYPE TYPE TYP	DN Ø NOMINALE DI PASSAGGIO SIZE DN Ø NOMINAL NENNWEITE mm	PRESSIONE DI APERTURA CRACKING PRESSURE PRESSION OUVERTURE ÖFFNUNGSDRUCK bar	RAPPORTO DI PILOTAGGIO PILOT RATIO RAPPORT DE PILOTAGE STEUERVERHÄLTNIS	PRESSIONE MASSIMA MAX. PRESSURE PRESSION MAXI DRUCK MAX. bar	PORTATA MASSIMA MAX. FLOW DEBIT MAXI DURCHFLOSS MAX. l/min.
BP2/7	7	0.5	1:4.6	350	15
BP2/710	7	0.5	1:4.6	310	30

CODICE TYPE TYPE TYP	A mm	B mm	C mm	D mm	E mm	F mm	G mm	H mm	I mm	L mm	CH.
BP2/7	118	63	23.5	1/4"BSPP	18	27	26	40	15	30	22
BP2/710	124	63	30.5	3/8"BSPP	18	27	26	40	15	30	24