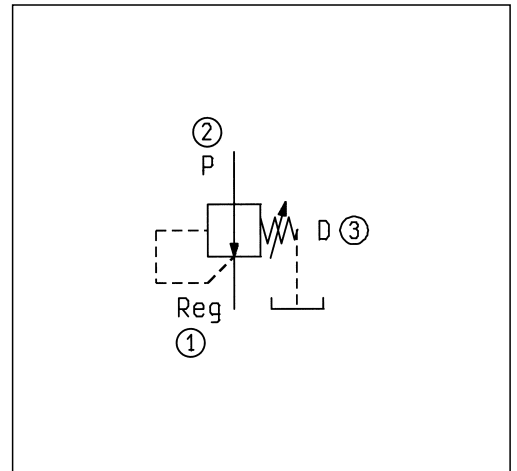
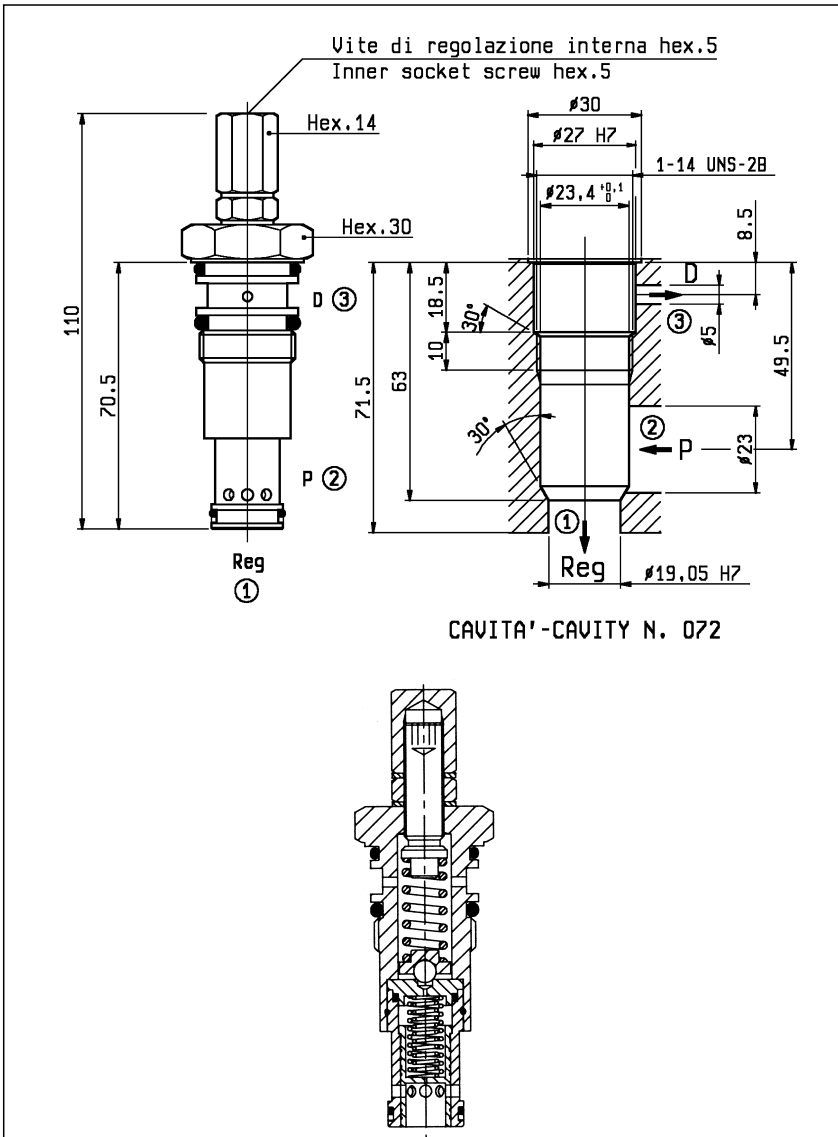


**VRP-150**

**04.93.01 - X - Y - Z**

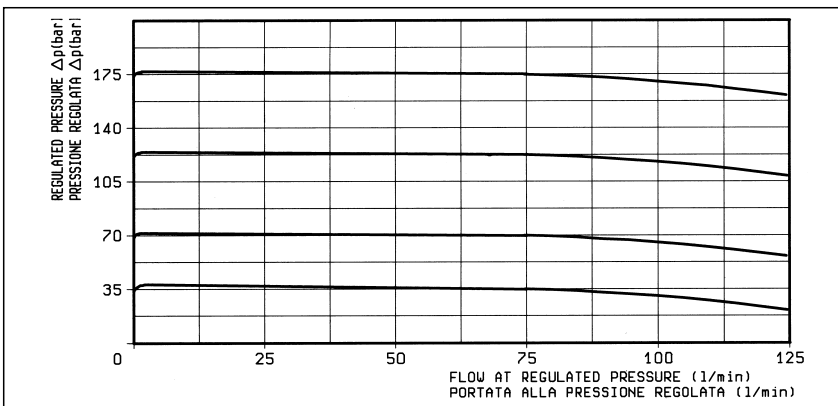


**DATI TECNICI / TECHNICAL DATA**

|  |            |
|--|------------|
| Coppia di serraggio<br>Installation torque                   | 121-133 Nm |
| Pressione di lavoro in entrata P max.<br>Max. inlet pressure | 250 bar    |
| Pressione in uscita regolata max.<br>Max. regulated pressure | 210 bar    |
| Portata max.<br>Flow max.                                    | 120 l/min  |
| Peso<br>Weight   | 0.28 kg    |

Trafilamento: circa 0.003 l/min al 90% della pressione di taratura standard.  
 Max leakage: 0.003 l/min at 90% of standard pressure setting.

Classe di pulizia dell'olio: almeno 18/14 ISO 4406 (9 NAS-1638).  
 Fluid cleanliness class: 18/14 ISO 4406 (9 NAS-1638) or better.



| X  | REGOLAZIONI<br>ADJUSTMENTS  |  |
|----|---|--|
| 03 | vite interna<br>esagono incassato<br>leakproof inner hex.<br>socket screw |  |
| 04 | volantino<br>e controvolantino<br>handknob<br>and locknut                 |  |

| Z  | MOLLE / SPRINGS   |   |   |                                   |                  |
|----|---|---|---|-----------------------------------|------------------|
|    | Campo taratura<br>min - max bar<br>Adj. press.<br>range bar | Incremento press.<br>bar / giro vite<br>Press. increase<br>bar / turn | Taratura standard<br>bar (Q = 5 l/min)<br>Std. setting bar<br>(made at 5 l/min) | Cod. ordinazione<br>Ordering code | Colore<br>Colour |
| 20 | 20-210  | 32  | 100   |                                   |                  |

| Y  | ATTACCHI / PORT SIZE |
|----|----------------------|
| 99 | Cartuccia/Cartridge  |