

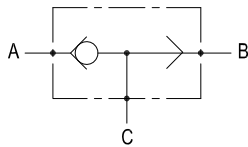
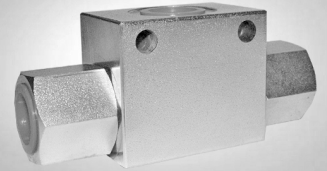
RE 18310-04/04.10

1/2

Replaces: RE 00171/02.07

Shuttle valve

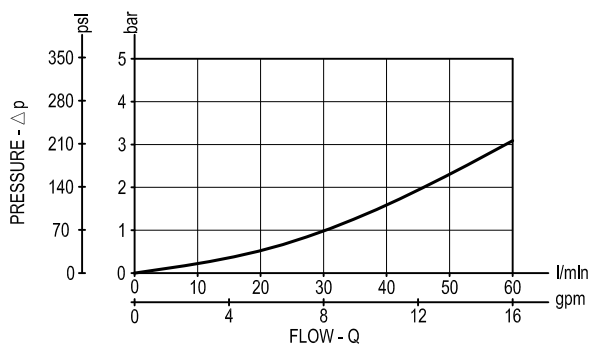
VA/SE34



Description

Single ball shuttle valve with 3 ports for in-line plumbing: when the ports A and B are connected to 2 work lines, the valve delivers the highest of the 2 pressures to the common port C. The single ball allows for the decay of the pressure signal when both work ports drop to a lower pressure level.

Performance



Technical data

Hydraulic

Max. operating pressure	bar (psi)	300 (4300)
-------------------------	-----------	------------

Max. flow	l/min (gpm)	60 (16)
-----------	-------------	---------

Relief setting: at least 1.3 times the highest expected load.

General

Manifold material	Steel
-------------------	-------

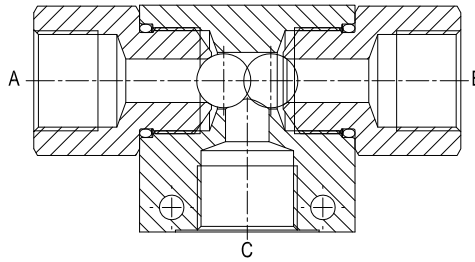
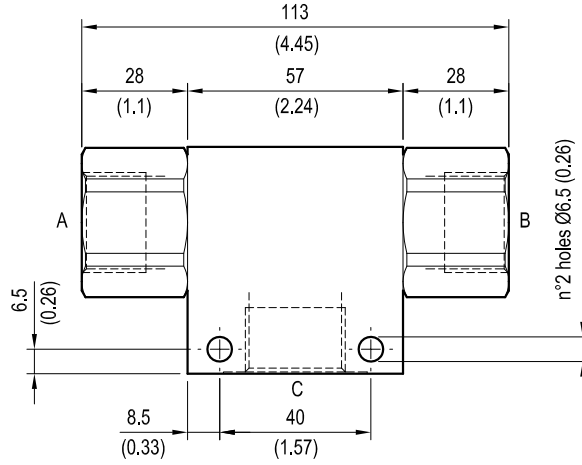
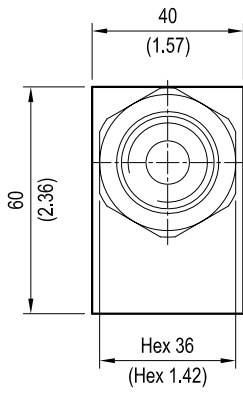
Weight	kg (lbs)	1.15 (2.5)
--------	----------	------------

Fluid temperature range	°C (°F)	between -30 (-22) and +100 (212)
-------------------------	---------	----------------------------------

Other technical data	see data sheet RE 18350-50
----------------------	----------------------------

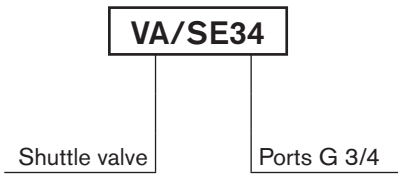
Note: for applications outside these parameters, please consult us.

Dimensions



mm (inches)

Ordering code



Type	Material number
VA/SE 3/4"G	R932500611

Type	Material number