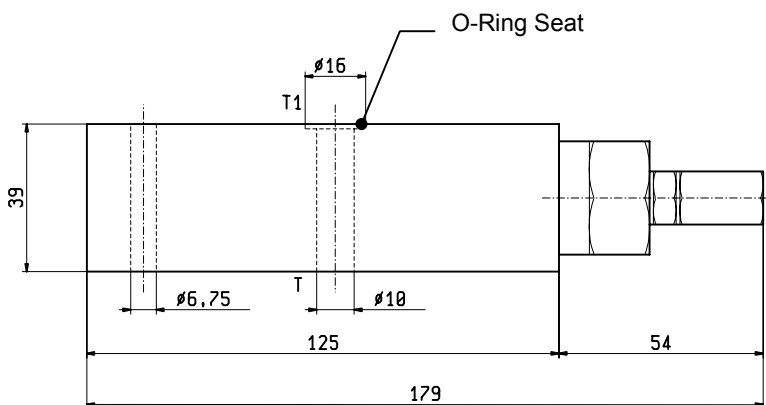
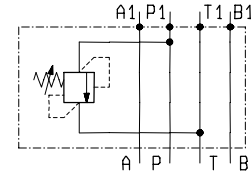
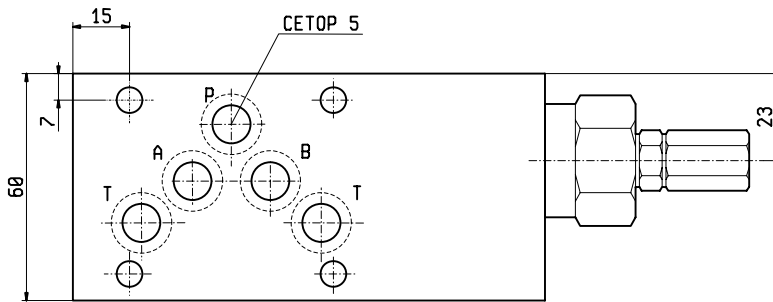


**SANDWICH VALVES
MODULES WITH RELIEF VALVES**



EM-VSP150-CETOP 5

OP.01.03 - X - 43 - Z



These modules contain one relief valve type VSP-150 (see Oil Control catalogue) operating from P to T.

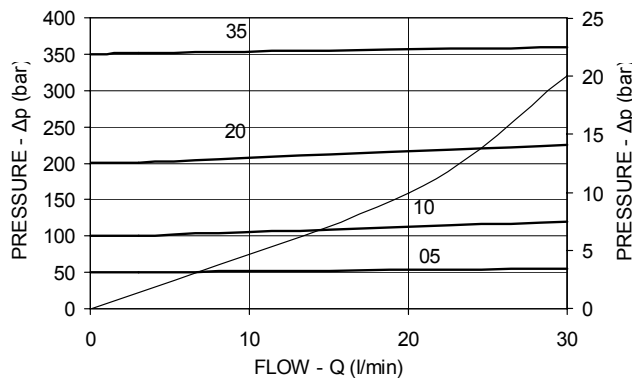
TECHNICAL DATA

Maximum Operating Pressure	250	bar
Rated Flow	80	l/min
Weight	0.880	kg
Fluids - Temperatures	page 7.01.040	
Testing Conditions - Seals	page 7.01.040	
Internal Leakage at 250 bar with 46 cSt oil	100	cm ³ /min
Filtration : 25 µm nominal or better	page 7.01.050	

Manifolds in high-strength aluminium for working pressures up to 250 bar.

Special steel manifolds can be supplied upon request for working pressures up to 350 bar and for fatigue cycle applications.

IMPORTANT: All products shown in this page are not available from stock and not included in our standard price list. Please contact our Sales Department for any information.



Z	SPRINGS				
	Adj. press. range bar	Press. increase bar/turn	Standard setting bar (Q=5 l/min)	Ordering code	Colour
05	1.7-70	20.5	50		black
10	7-105	26	100		blue
20	10-210	35	200		green
40	35-420	115	350		yellow

X	ADJUSTMENTS	
03	Leakproof hex. socket screw	
04	Handknob and locknut	
	Sealing cap ordering code 03.05.01.004	