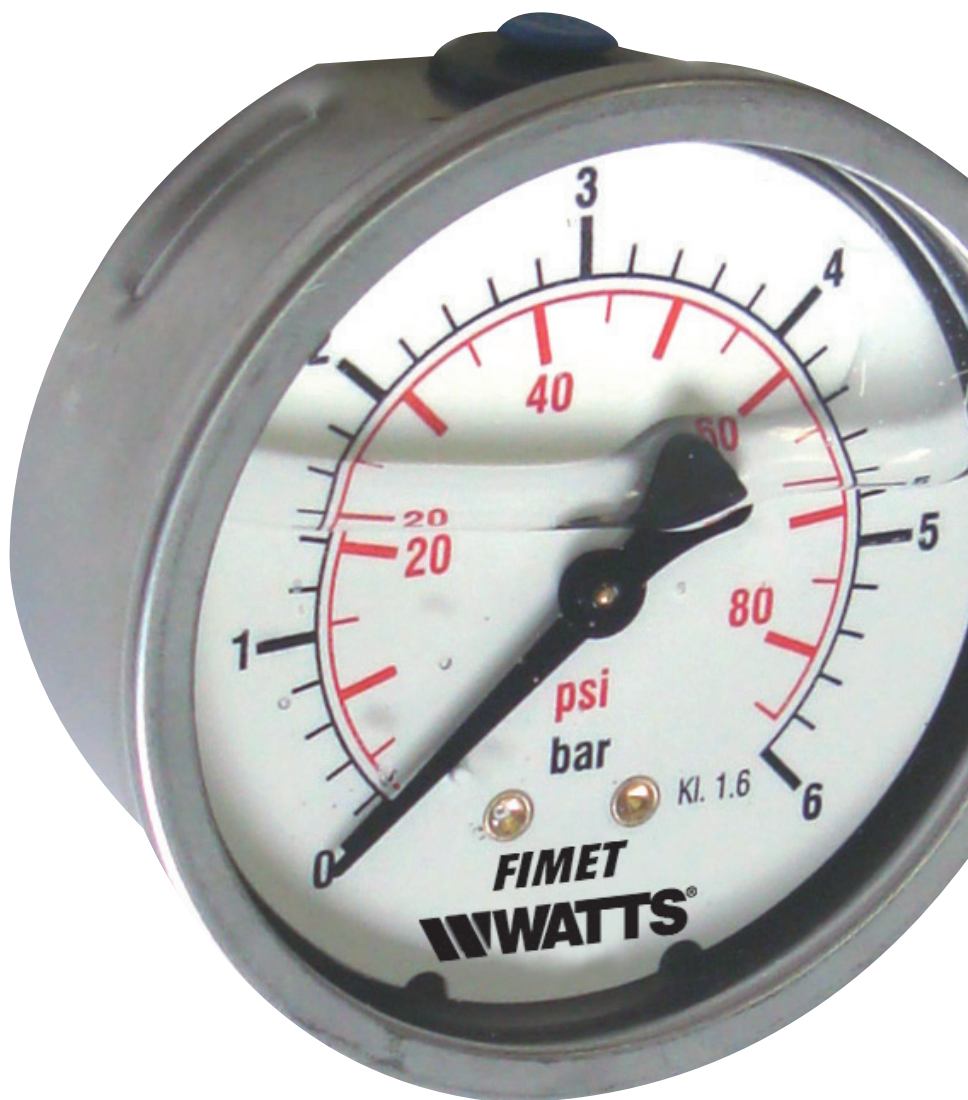


# MG3A-INOX

Bourdon tube pressure gauges

## Technical Data Sheet



## Description

Glycerine filled stainless steel case centre back entry. For pneumatic industry, gases and liquids not viscous, not aggressive and not crystallising.

### MG3A-INOX 50

DN50 pressure gauges.



Part No	Pressure Range	Connection	Options*	Box/Master	Min. order
	0-2.5 bar/psi	G1/4B		50/50	50
PZ7N2504DJ00	0-4 bar/psi	G1/4B	D+C	50/50	50
PZ7N2506DJ00	0-6 bar/psi	G1/4B	D+C	50/50	50
PZ7N2510DJ01	0-10 bar/psi	G1/4B	D+C+LF	50/50	50
PZ7N2512DJ00	0-12 bar/psi	G1/4B	D+C+Z	50/50	50
PZ7N2516DJ00	0-16 bar/psi	G1/4B	D+Z0	50/50	50
	0-20 bar/psi	G1/4B		50/50	50
PZ7N2525DJ00	0-25 bar/psi	G1/4B	D+C	50/50	50
	0-40 bar/psi	G1/4B		50/50	50
	0-60 bar/psi	G1/4B		50/50	50
	0-100 bar/psi	G1/4B		50/50	50
	0-160 bar/psi	G1/4B		50/50	50
PZ7N2660DJ00	0-250 bar/psi	G1/4B	D	50/50	50
PZ7N2662DJ00	0-315 bar/psi	G1/4B	D+C+Z	50/50	50
PZ7N2666DJ00	0-400 bar/psi	G1/4B	D+C+Z	50/50	50
	0-600 bar/psi	G1/4B		50/50	50

### MG3A-INOX 63

DN63 pressure gauges.



Part No	Pressure Range	Connection	Options*	Box/Master	Min. order
	-76-0 cm Hg	G1/4B		50/50	50
PF309914LF	-1/0 bar/in Hg	G1/4B	D+LF	50/50	5
	-1/0.6 bar/psi	G1/4B		50/50	50
PF3403DJ00	-1+1.5 bar/in hg	G1/4B	D	50/50	50
PF3504BJ01	-1+3 bar	G1/4B		50/50	50
PF3406BJ00	-1+5 bar	G1/4B		50/50	50
	-1+9 bar	G1/4B		50/50	50
	-1+15 bar	G1/4B		50/50	50
PF340114LF	0-1 bar/psi	G1/4B	D+LF	50/50	50
PF340214LF	0-1.6 bar/psi	G1/4B	D+LF	50/50	50
PF350314LF	0-2.5 bar/psi	G1/4B	D+LF	50/50	5
PF350414LF	0-4 bar/psi	G1/4B	D+LF	50/50	5
PF350614LF	0-6 bar/psi	G1/4B	D+LF	50/50	5
PF351014LF	0-10 bar/psi	G1/4B	D+LF	50/50	5
PF351214LF	0-12 bar/psi	G1/4B	D+LF	50/50	5
PF351614LF	0-16 bar/psi	G1/4B	D+LF	50/50	5
PF352014LF	0-20 bar/psi	G1/4B	D+LF	50/50	5
PF352514LF	0-25 bar/psi	G1/4B	D+LF	50/50	5
PF354014LF	0-40 bar/psi	G1/4B	D+LF	50/50	5
PF364414LF	0-60 bar/psi	G1/4B	D+LF	50/50	5
PF364814LF	0-100 bar/psi	G1/4B	D+LF	50/50	5
PF365414LF	0-160 bar/psi	G1/4B	D+LF	50/50	5
PF366014LF	0-250 bar/psi	G1/4B	D+LF	50/50	5
PF366214LF	0-315 bar/psi	G1/4B	D+LF	50/50	5
PF366614LF	0-400 bar/psi	G1/4B	D+LF	50/50	5
PF367014LF	0-600 bar/psi	G1/4B	D+LF	50/50	5



## MG3A-INOX 100


DN100 pressure gauges.

Part No	Pressure Range	Connection	Options*	Box/Master	Min. order
	-76-0 cm Hg			1/12	12
PF509916LF	-1/0 bar/in Hg	G1/2B	D+LF	1/12	1
	-1/0.6 bar			1/12	12
PF5403DL00	-1+1.5 bar/in hg	G1/2B	D	1/12	1
	-1+3 bar			1/12	12
PF5406DL00	-1+5 bar	G1/2B	D	1/12	1
	-1+9 bar			1/12	12
	-1+15 bar			1/12	12
PF540116LF	0-1 bar/psi	G1/2B	D+C+LF+Z0	1/12	1
	0-1.6 bar/psi	G1/2B		1/12	12
PF550316LF	0-2.5 bar/psi	G1/2B	D+LF	1/12	1
PF550416LF	0-4 bar/psi	G1/2B	D+LF	1/12	1
PF550616LF	0-6 bar/psi	G1/2B	D+LF	1/12	1
PF551016LF	0-10 bar/psi	G1/2B	D+LF	1/12	1
PF551216LF	0-12 bar/psi	G1/2B	D+LF	1/12	1
PF551616LF	0-16 bar/psi	G1/2B	D+LF	1/12	1
PF552016LF	0-20 bar/psi	G1/2B	D+LF	1/12	1
PF552516LF	0-25 bar/psi	G1/2B	D+LF	1/12	1
PF554016LF	0-40 bar/psi	G1/2B	D+LF	1/12	1
PF564416LF	0-60 bar/psi	G1/2B	D+LF	1/12	1
PF564816LF	0-100 bar/psi	G1/2B	D+LF	1/12	1
PF565416LF	0-160 bar/psi	G1/2B	D+LF	1/12	1
PF566016LF	0-250 bar/psi	G1/2B	D+LF	1/12	1
PF566216LF	0-315 bar/psi	G1/2B	D+LF	1/12	1
PF566616LF	0-400 bar/psi	G1/2B	D+LF	1/12	1
PF567016LF	0-600 bar/psi	G1/2B	D+LF	1/12	1

### \*Options included

D = Dual scale bar/psi (black/red)  
 Z0 = Without restrictor hole 3 mm  
 Z = Without restrictor hole 0.5 mm  
 LF = Fimet Watts logo on the dial  
 C = Accuracy class 1.6

## Customizations per minimum order quantity

Customizations	Model
PZMINACC050 - Mounting bracket - Separately supplied PMINACC047 - Mounting bracket - Mounted supplied	MG3A-INOX 50 MG3A-INOX 63
	
Z - Restrictor hole 0.5 mm for ranges < 40 bar	MG3A-INOX 50/63/100
Z0 - Without restrictor hole 3 mm for ranges ≥ 40 bar	MG3A-INOX 50/63/100
RN - Zero filling for ambient temperatures -40° +60 °C	MG3A-INOX 50/63/100
VC - Chemical window	MG3A-INOX 63
Customized dials, other scale ranges or connections on request	MG3A-INOX 50/63/100

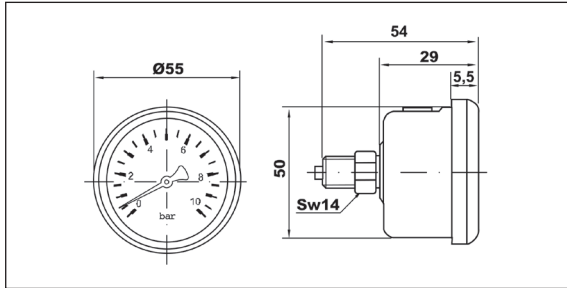
## Features

Materials	MG3A-INOX 50	MG3A-INOX 63	MG3A-INOX 100
Case + roll on bezel	Stainless steel AISI 304 with blow-out device	Stainless steel AISI 304 with blow-out device	Stainless steel AISI 304 with blow-out device
Case + roll on bezel	Polycarbonate	Vedril PMMA	Vedril PMMA
Dial	White aluminium	White aluminium	White aluminium
Pointer	Black plastic	Black plastic	Black plastic
Pressure connection	Cu-alloy, 14 mm flats	Cu-alloy, 14 mm flats	Cu-alloy, 21 mm flats
Pressure element	Bourdon tube Cu-alloy, soft soldered ≤ 60 bar C-type, > 60 bar helical type Sn-Ag soldered	Bourdon tube Cu-alloy, soft soldered ≤ 60 bar C-type, > 60 bar helical type Sn-Ag soldered	Bourdon tube Cu-alloy, soft soldered ≤ 60 bar C-type, > 60 bar helical type Sn-Ag soldered
Movement	Cu-alloy	Cu-alloy	Cu-alloy
Liquid filling	Glycerine 99.5%	Glycerine 99.5%	Glycerine 99.5%

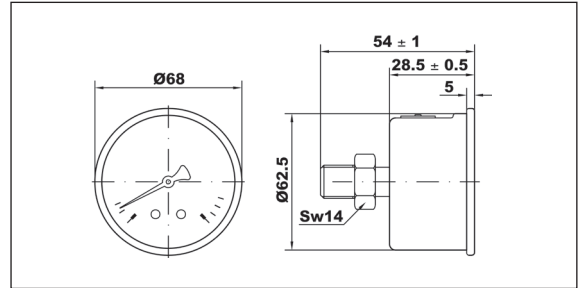
Technical features	
Design	EN 837-1
Working pressure	Steady: 75% of full scale value Fluctuating: 60% of full scale value Short time: full scale value
Temperature limits	Ambient: -20 ... +60°C Medium: +60°C maximum Storage: -20 ... +60°C
Temperature effect	Deviation from reference temperature (+20°C): ±0,04%/1K of the span
Accuracy class: MG3A-INOX 50 MG3A-INOX 63 MG3A-INOX 100	cl. 2.5 cl. 1.6 cl. 1.6
Degree of protection	IP 65 for EN 60 529 / IEC 529
Individual weight: MG3A-INOX 50 MG3A-INOX 63 MG3A-INOX 100	0.127 kg 0.209 kg 0.506 kg

## Overall dimensions (mm)

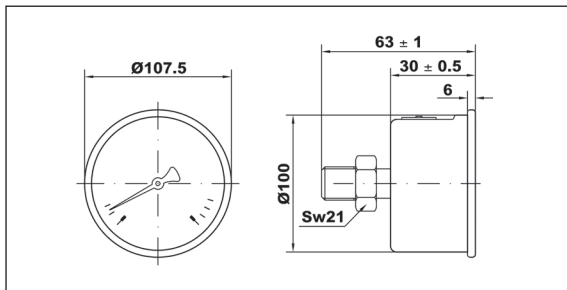
### MG3A-INOX 50



### MG3A-INOX 63



### MG3A-INOX 100



## Specification text

Bourdon tube pressure gauges, **MG3A-INOX Series**, Watts brand, for industry, gases and liquids not viscous, not aggressive and not crystallizing. **Glycerine filled inox case** DN 50-63-100 mm back entry, DN 50-63 **back entry or with panel mounting brackets**. Vacuum measures range -1/0 at high pressure up to 600 bar. Temperature limits + 60°C. Accuracy class 1.6. **Compliant with EN 837-1.**



---

The descriptions and photographs contained in this product specification sheet are supplied by way of information only and are not binding.  
Watts Industries reserves the right to carry out any technical and design improvements to its products without prior notice. Warranty: All sales and contracts for sale are expressly conditioned on the buyer's assent to Watts terms and conditions found on its website at [www.wattsindustries.com](http://www.wattsindustries.com). Watts hereby objects to any term, different from or additional to Watts terms, contained in any buyer communication in any form, unless agreed to in a writing signed by an officer of Watts.

---



---

**Watts Industries Italia S.r.l.**  
Via Brenno, 21 • 20853 Biassono (MB) • Italy  
Tel. +39 039 4986.1 • Fax +39 039 4986.222  
[infowattsitatia@wattswater.com](mailto:infowattsitatia@wattswater.com) • [www.watts.com](http://www.watts.com)