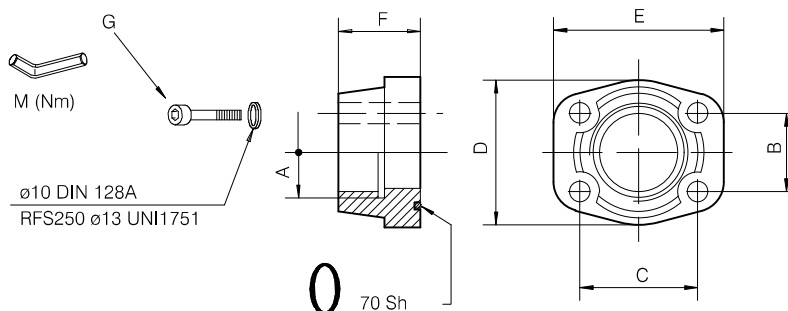


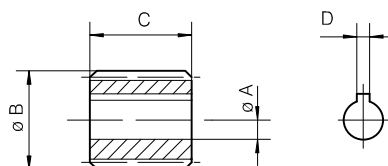
Material: cast-iron



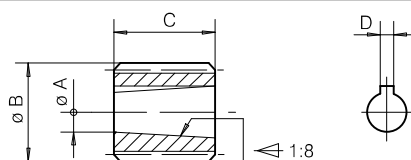
Type	Order code	A	B		C		D		E		F		M (Nm)	O-Ring	G (DIN912)
			mm	inch	mm	inch	mm	inch	mm	inch	mm	inch			
RFS249	200.7702.4006.0	3/4" BSP	22.2	.87	47.6	1.87	48	1.89	65	2.56	36	1.42	25+2	4100	3/8"16UNF
RFS248	200.7702.5003.0	1" BSP	26.2	1.03	52.4	2.06	52	2.04	70	2.75	38	1.50		4131	3/8"16UNC
RFS275	200.7702.9017.0	1 1/4" BSP	30.2	1.19	58.7	2.31	68	2.68	79	3.11	41	1.61		4150	7/16"14UNC
RFS250	200.7702.9006.0	1 1/2" BSP	35.7	1.40	70	2.99	76	2.99	93	3.66	44	1.73		4187	1/2"13UNC

7.2 Splined couplings

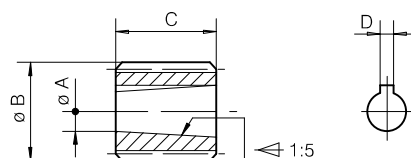
Material: UNI5331 16 CrNi4Pb Hardness 58 - 60 HRC (*) UNI5332 38NiCrMo4Pb R= 950 - 1050 N/mm²



Type	Pump group	Order code	Splined profile DIN 5482	A		B		C		D		n. of feet
				mm	inch	mm	inch	mm	inch	mm	inch	
GSH-06	AP05	200.5314.20001	20X17	7	.27	19.5	.76	9	.35	2	.08	12



Type	Pump group	Order code	Splined profile DIN 5482	A		B		C		D		n. of feet
				mm	inch	mm	inch	mm	inch	mm	inch	
GSH-1-12	AP100	200.5315.30001	20X17	8	.31	19.5	.77	14.5	.57	2.4	.09	12
GSH-1-14	AP100	200.5315.30002	25x22			24.5	.96					14
GSH-2-14*	AP200	200.5315.40001	25x22	14.2	.56	27.5	1.08	22	.87	3.2	.12	15
GSH-2-15	AP200	200.5315.40002	28x25			34.5	1.36					18
GSH-2-18	AP200	200.5315.40003	35x31			39.5	1.55					20
GSH-3-18*	AP300	200.5315.50001	35x31	18.7	.73	26	1.02	4	.16	4	.16	18
GSH-3-20	AP300	200.5315.50002	40x36									20



Type	Pump group	Order code	Splined profile DIN 5482	A		B		C		D		n. of feet
				mm	inch	mm	inch	mm	inch	mm	inch	
GSH-1B-12	AP100	200.5314.30001	20X17	7.6	.3	19.5	.77	12	.47	2	.08	12
GSH-2B-14*	AP200	200.5314.40001	25x22	13	.5	24.5	.96	20	.79	3	.12	14
GSH-2B-15	AP200	200.5314.40002	28x25			27.5	1.08					15
GSH-2B-18	AP200	200.5314.40003	35x31			34.5	1.36					18