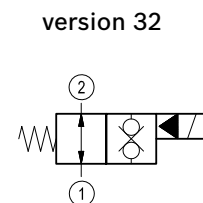
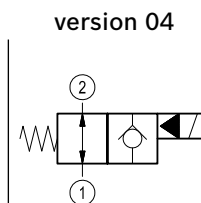
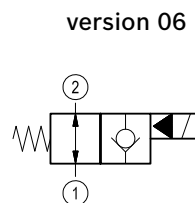
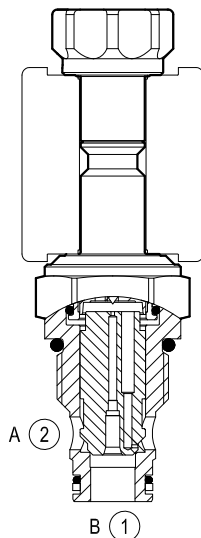


# Solenoid operated valves pilot operated poppet type 2-way normally open

Common cavity, Size 10

VEI-8A-10-NA

OD.15 - X - 36 - Y - S0



## General

Weight	kg (lbs)	0.16 (0.35)
Installation orientation	Optional	
Ambient temperature range	°C (°F)	-30 to 60 (-22 to 140)

## Hydraulic

Max. operating pressure	bar (psi)	350 (5000)
Max. proof pressure	bar (psi)	420 (6000)
Flow range	l/min. (gpm)	2-70 (0.5-18)
Fatigue cycle life	cycles	1 million cycles at 350 bar
Max. internal leakage	drops/min.	20
Fluid temperature range	°C (°F)	-20 to 80 (-4 to 176)

Fluids	Mineral-based or synthetics with lubricating properties at viscosities of 20 to 380 mm²/s (cSt)	
--------	---	--

Installation torque	Nm (ft-lbs)	44-56 (33-42)
---------------------	-------------	---------------

Filtration	Nominal value max. 10µm (NAS 8) ISO 4406 19/17/14	
------------	---	--

Cavity	CA-10A-2N see RE 18325-75	
--------	---------------------------	--

Seal kit - version 1	code	RG10A2010520100
	material no.	R901111363

Seal kit - version 2-3	code	RG10A2010530100
	material no.	R901111366

Seal kit coil	code	RG12A1PNBR7010
	material no.	R934003958

Other technical data	See data sheet RE 18350-50	
----------------------	----------------------------	--

## Electrical

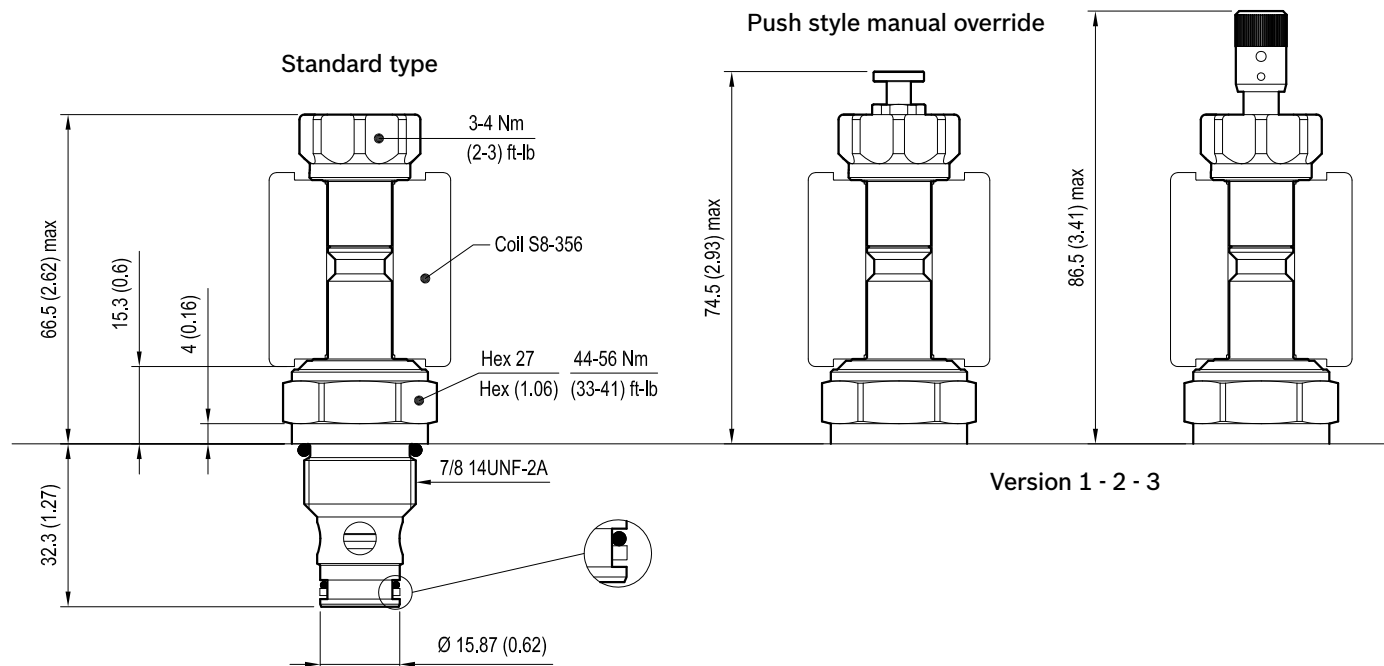
Type of voltage	DC voltage
Coil type	S8-356 see RE 18325-90
Supply voltage	See data sheet RE 18325-90
Nominal voltage	± 10%
Power consumption	W 20
Duty cycle coil	% See performance graphs
Type of protection	See data sheet RE 18325-90

Note: Coils must be ordered separately.

## Dimensions

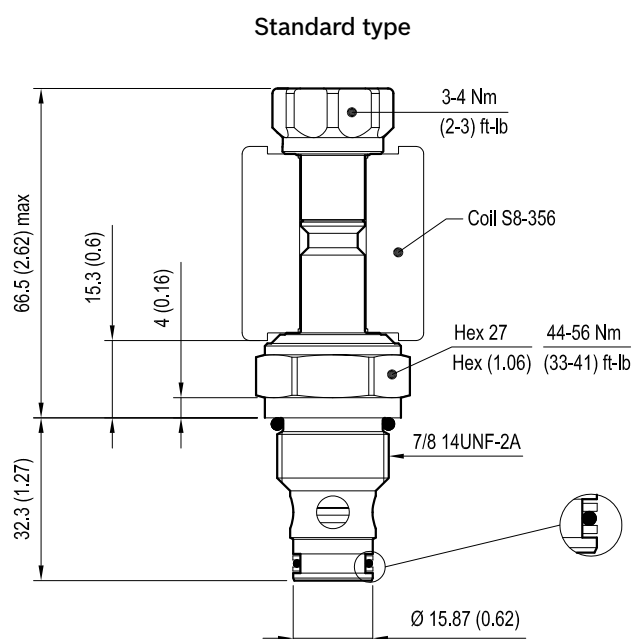
Version 1: Solenoid operated valve, poppet 2-way normally open

Push and twist style manual override



Version 2: Solenoid operated valve, poppet 2-way normally open

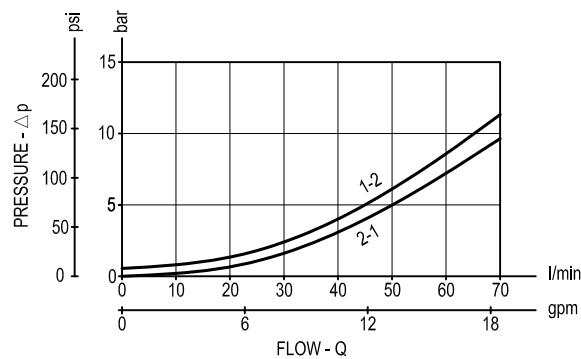
Version 3: Solenoid operated valve, poppet 2-way double lock normally open



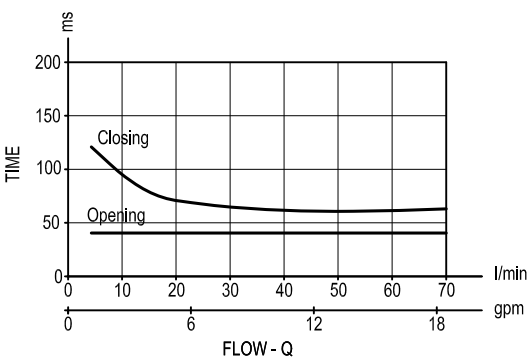
mm (Inches)

Performance graphs

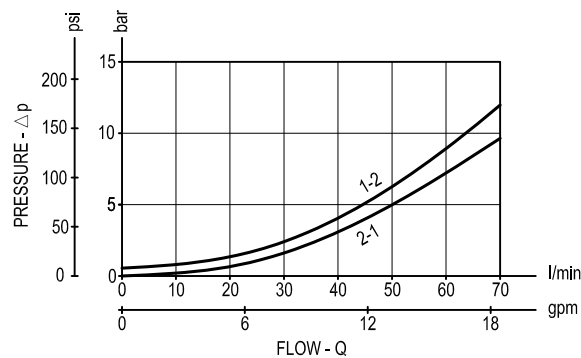
Version 06 - Version 04



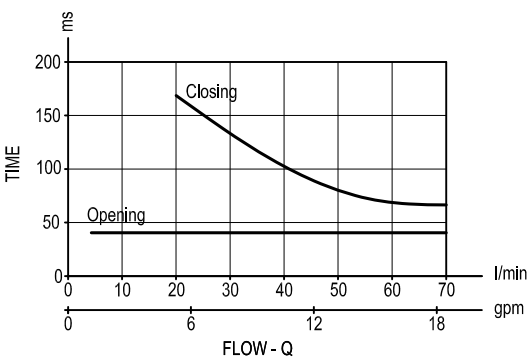
Standard



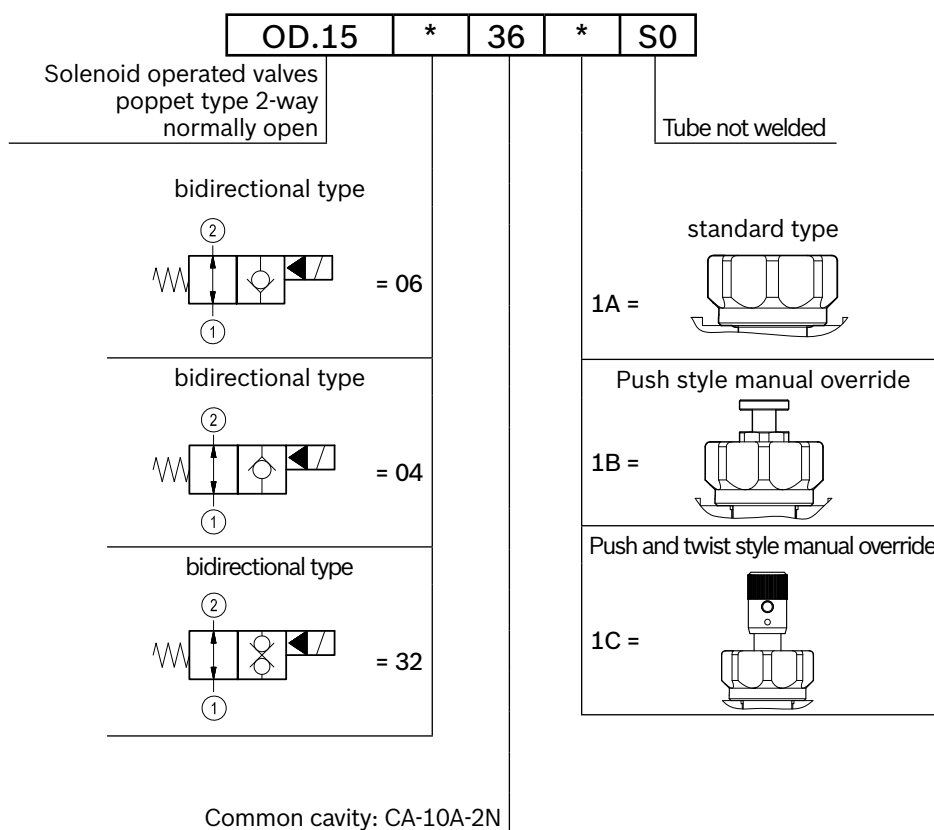
Version 32



Standard



## Ordering code



Type	Material number
OD1504361AS000	R901091124
OD1504361BS000	R901091125
OD1504361CS000	R901091126
OD1506361AS000	R901080489
OD1506361BS000	R901091136
OD1506361CS000	R901091137
OD1532361AS000	R901091175
OD1532361BS000	R901091176
OD1532361CS000	R901091178

Type	Material number