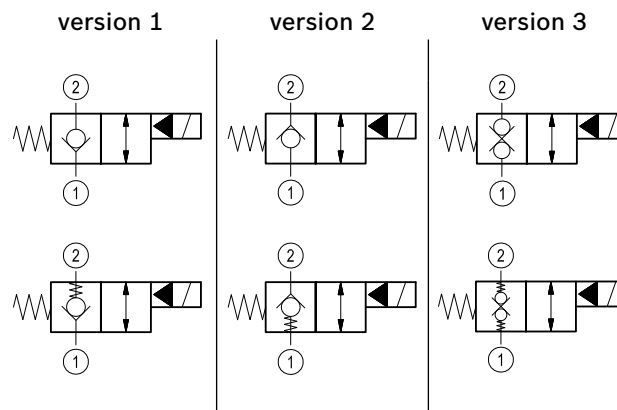
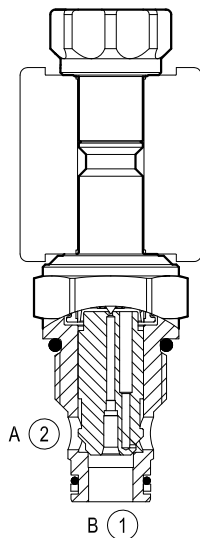


Solenoid operated valves pilot operated poppet type 2-way normally closed

Common cavity, Size 10

VEI-8A-10-NC

OD.15 - X - 36 - Y - Z



General

Weight	kg (lbs)	0.16 (0.35)
Installation orientation		Optional
Ambient temperature range	°C (°F)	-30 to 60 (-22 to 140)

Hydraulic

Max. operating pressure	bar (psi)	350 (5000)
Max. proof pressure	bar (psi)	420 (6000)
Flow range	l/min. (gpm)	2-70 (0.5-18)
Fatigue cycle life	cycles	1 million cycles at 350 bar
Max. internal leakage	drops/min.	20
Fluid temperature range	°C (°F)	-20 to 80 (-4 to 176)
Fluids		Mineral-based or synthetics with lubricating properties at viscosities of 20 to 380 mm²/s (cSt)
Installation torque	Nm (ft-lbs)	44-56 (33-42)
Filtration		Nominal value max. 10µm (NAS 8) ISO 4406 19/17/14
Cavity		CA-10A-2N see RE 18325-75
Seal kit version 1	code material no.	RG10A2010520100 R901111363
Seal kit version 2-3	code material no.	RG10A2010530100 R901111366
Seal kit coil	code material no.	RG12A1PNBR7010 R934003958
Other technical data		See data sheet RE 18350-50

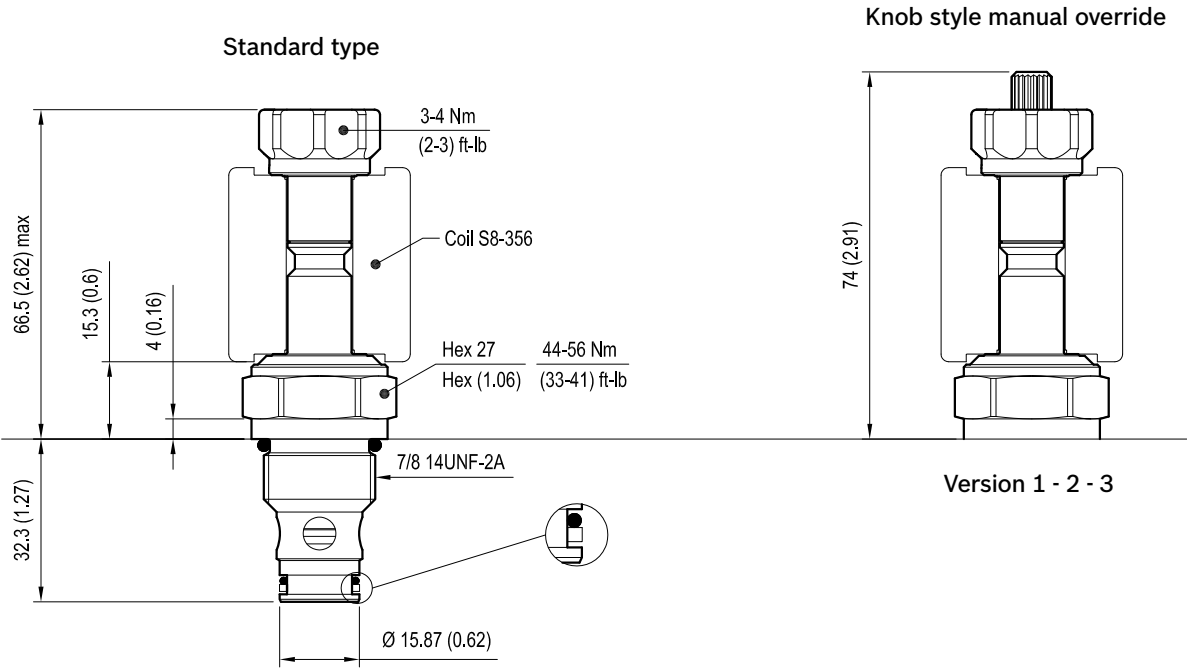
Electrical

Type of voltage	DC voltage
Coil type	S8-356 see Re 18325-90
Supply voltage	See data sheet RE 18325-90
Nominal voltage	± 10%
Power consumption	W 20
Duty cycle coil	% See performance graphs
Type of protection	See data sheet RE 18325-90

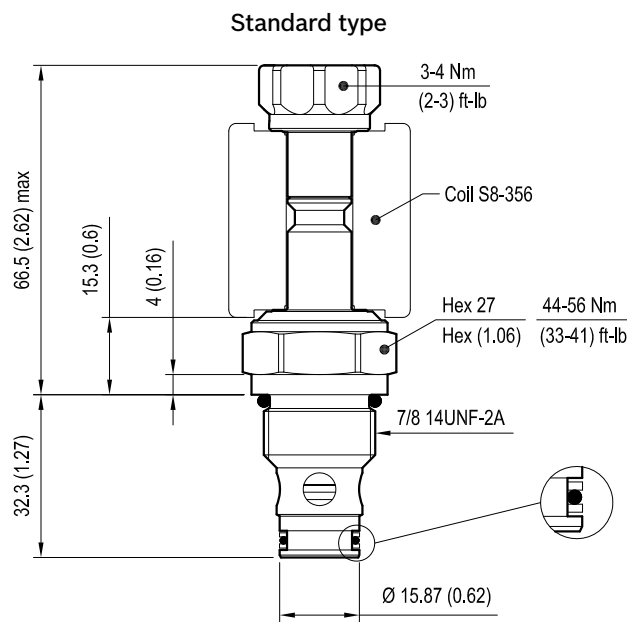
Note: Coils must be ordered separately.

Dimensions

Version 1: Solenoid operated valve, poppet 2-way normally closed



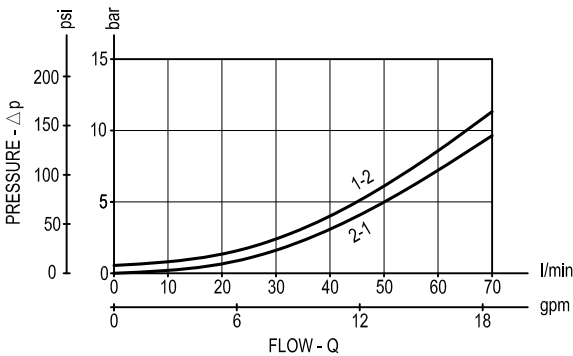
Version 2: Solenoid operated valve, poppet 2-way normally closed
Version 3: Solenoid operated valve, poppet 2-way double lock normally closed



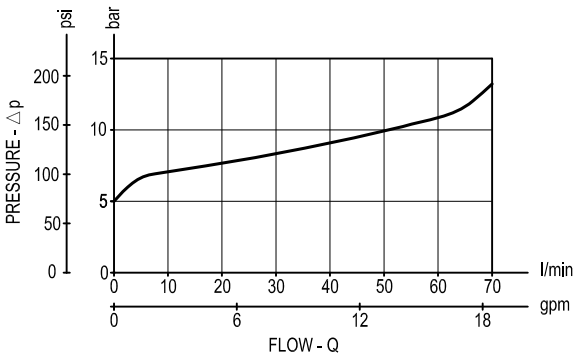
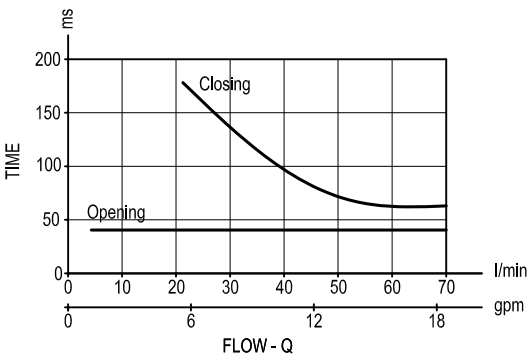
mm (Inches)

Performance graphs

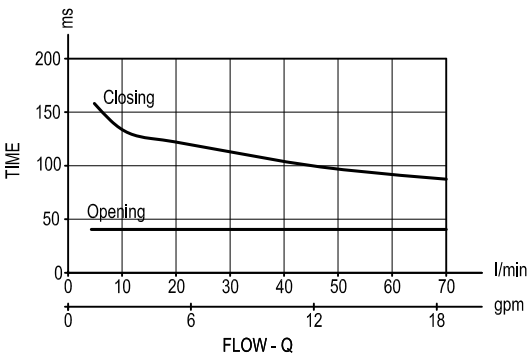
Version 1 - Version 2



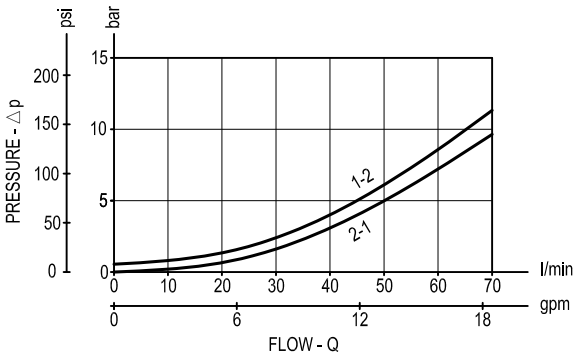
Standard



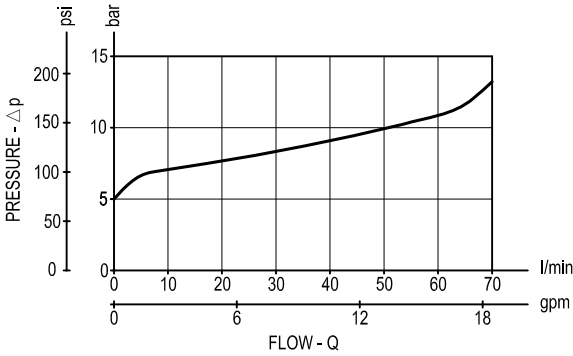
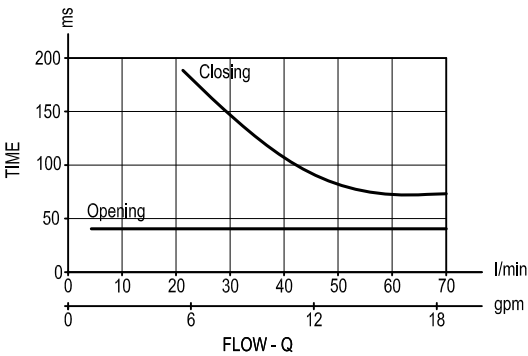
Extra spring



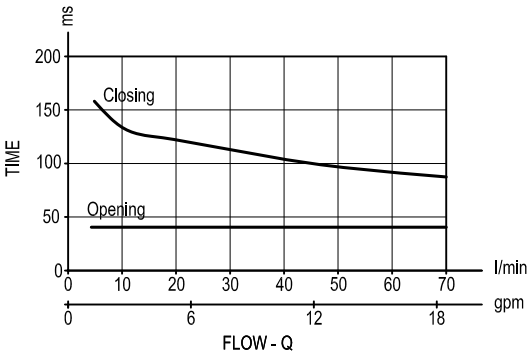
Version 3



Standard



Extra spring

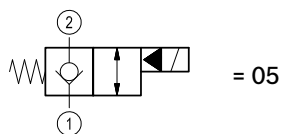


Ordering code

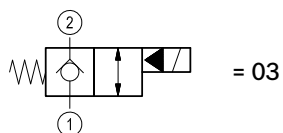
OD.15	X	36	*	*
-------	---	----	---	---

Solenoid operated valves
poppet type 2-way
normally closed

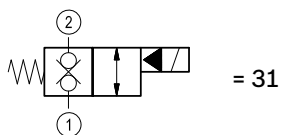
bidirectional type



bidirectional type

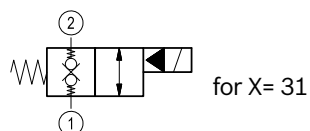
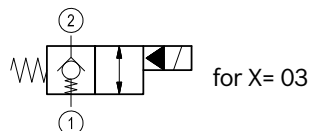
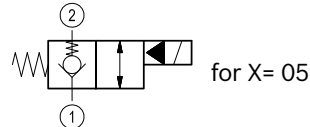


double lock



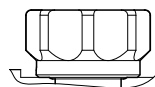
S0 = Tube not welded

S8 = Tube not welded with extra spring



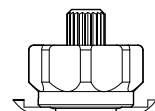
standard type

3A =



knob style manual override

3D =



Common cavity: CA-10A-2N

Type	Material number
OD1503363AS000	R901091113
OD1503363AS800	R901091114
OD1503363DS800	R901109956
OD1505363AS000	R901090947
OD1505363AS800	R901090945
OD1505363DS000	R901080482
OD1505363DS800	R901109969
OD1531363AS000	R901091166
OD1531363AS800	R901109984

Type	Material number
OD1531363DS000	R901091167
OD1531363DS800	R901109985