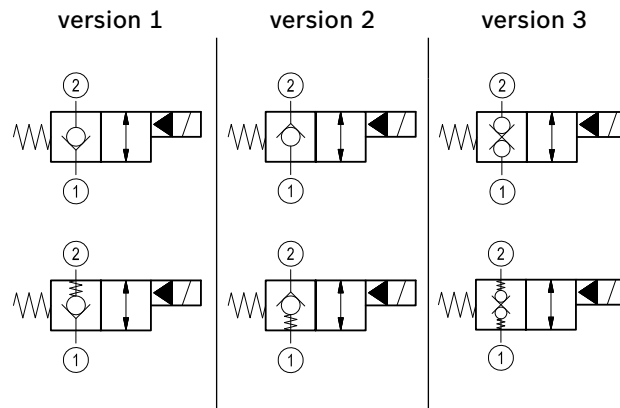
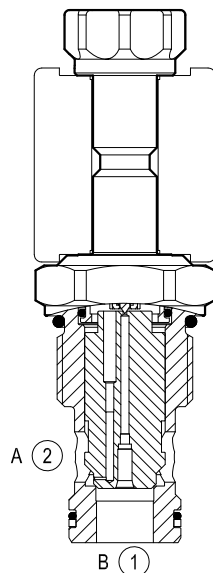


Solenoid operated valves pilot operated poppet type 2-way normally closed

Common cavity, Size 12

VEI-8A-12A-NC

OD.15 X - 89 - Y - Z



General

Weight	kg (lbs)	0.22 (0.48)
Installation orientation		Optional
Ambient temperature range	°C (°F)	-30 to 60 (-22 to 140)

Hydraulic

Max. operating pressure	bar (psi)	350 (5000)
Flow range	l/min. (gpm)	5-150 (1-40)
Max. internal leakage	drops/min.	20
Fluid temperature range	°C (°F)	-20 to 80 (-4 to 176)
Fluids		Mineral-based or synthetics with lubricating properties at viscosities of 20 to 380 mm ² /s (cSt)
Installation torque	Nm (ft-lbs)	54-66 (40-49)
Filtration		Nominal value max. 10µm (NAS 8) ISO 4406 19/17/14
Cavity		CA-12A-2N see RE 18325-75
Seal kit - version 1	code material no.	RG12A2010520100 R901111377
Seal kit - version 2-3	code material no.	RG12A2010530100 R930003374
Seal kit coil	code material no.	RG12A1PNBR7010 R934003958
Other technical data		See data sheet RE 18350-50

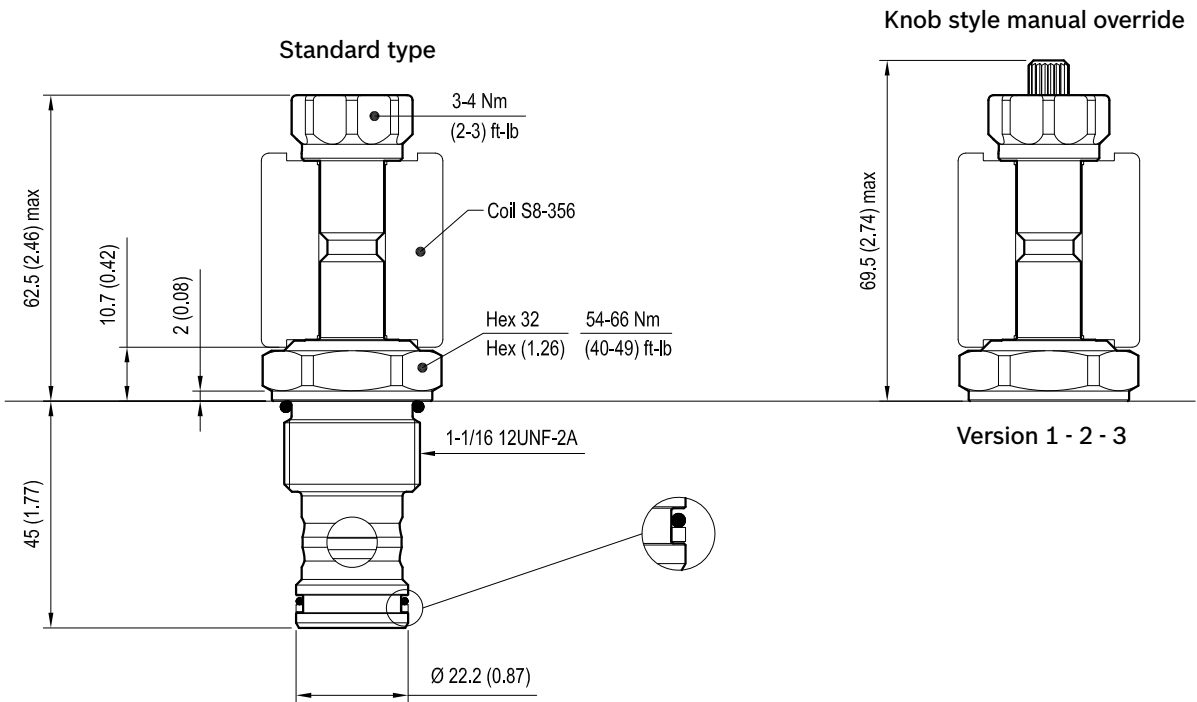
Electrical

Type of voltage	DC voltage
Coil type	S8-356 see RE 18325-90
Supply voltage	See data sheet RE 18325-90
Nominal voltage	± 10%
Power consumption	W 20
Duty cycle coil	% See performance graphs
Type of protection	See data sheet RE 18325-90

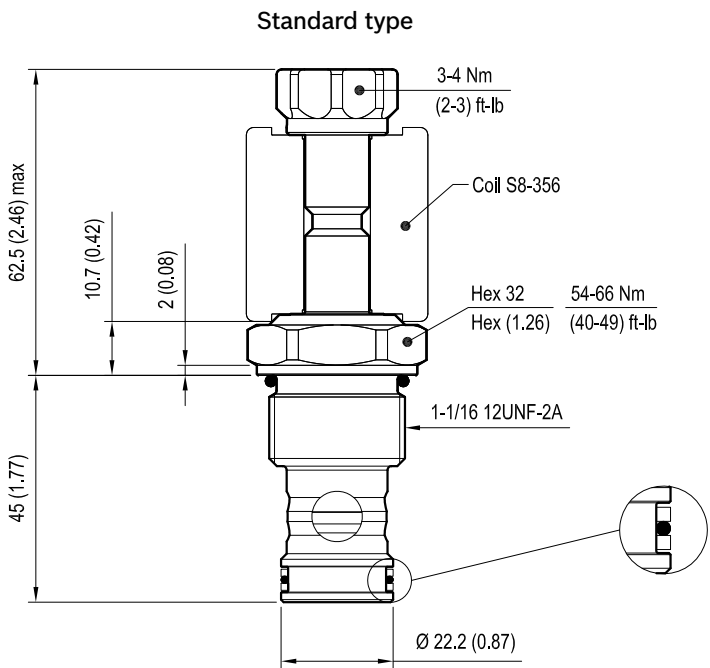
Note: Coils must be ordered separately.

Dimensions

Version 1: Solenoid operated valve, poppet 2-way normally closed



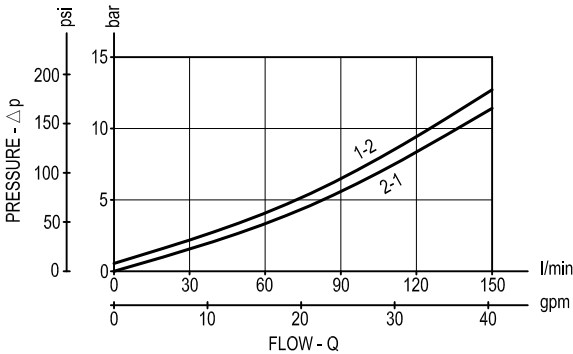
Version 2: Solenoid operated valve, poppet 2-way normally closed
Version 3: Solenoid operated valve, poppet 2-way double lock normally closed



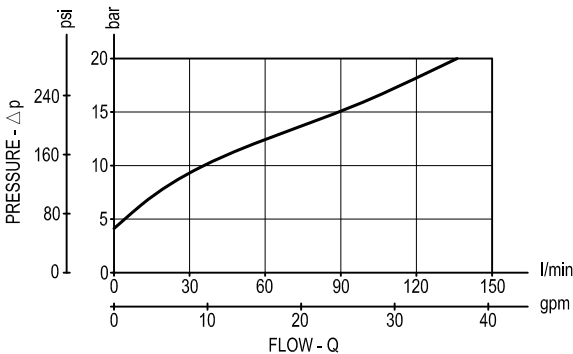
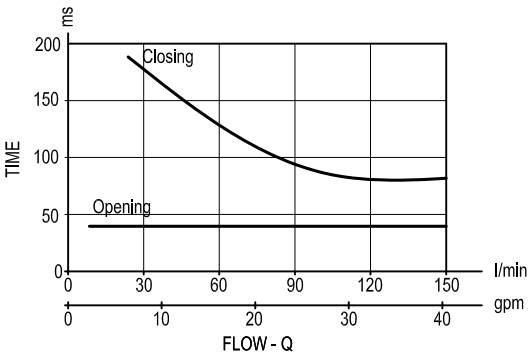
mm (Inches)

Performance graphs

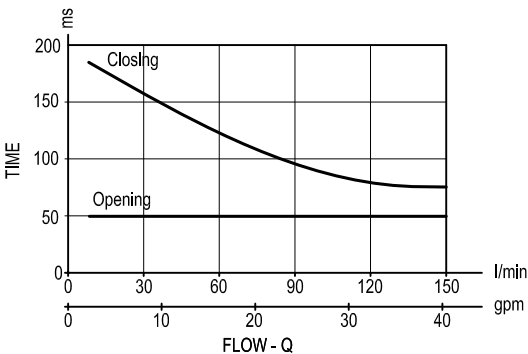
Version 1 - Version 2



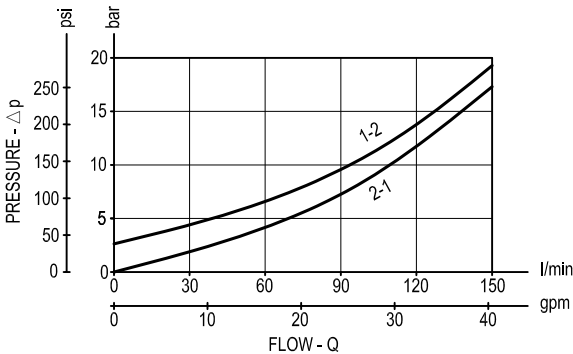
Standard



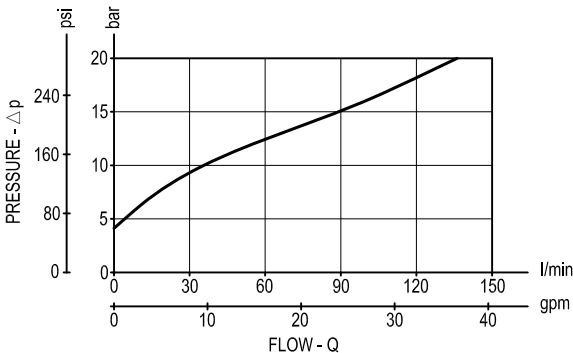
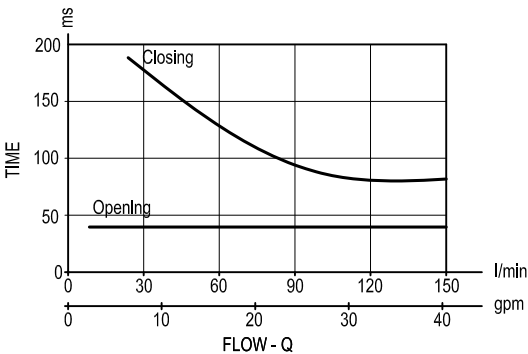
Extra spring



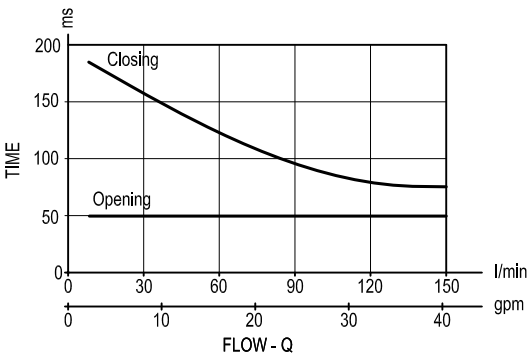
Version 3



Standard



Extra spring

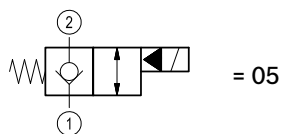


Ordering code

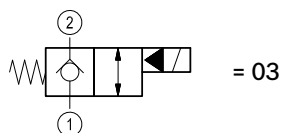
OD.15	*	89	*	*
-------	---	----	---	---

Solenoid operated valves
poppet type 2-way
normally closed

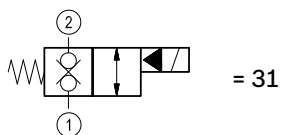
bidirectional type



bidirectional type

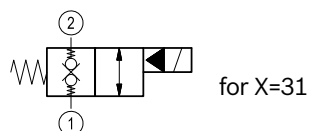
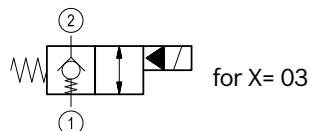
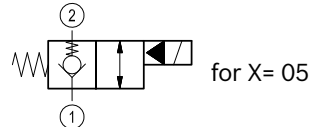


double lock



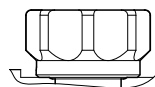
S0 = Tube not welded

S8 = Tube not welded with extra spring



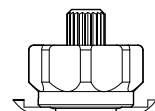
standard type

3A =



knob style manual override

3D =



Common cavity: CA-12A-2N

Type	Material number
OD1503893AS000	R901091116
OD1503893AS800	R901109961
OD1503893DS000	R901091117
OD1503893DS800	R901109962
OD1505893AS000	R901091127
OD1505893AS800	R901091128
OD1505893DS000	R901091129
OD1505893DS800	R901109978
OD1531893AS000	R901091168

Type	Material number
OD1531893AS800	R901091169
OD1531893DS000	R901091170
OD1531893DS800	R901109990