

RE 18332-73/12.09
 Replaces: RE 00199/11.07

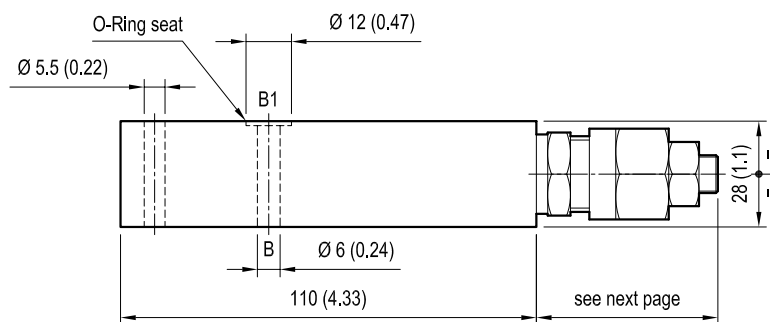
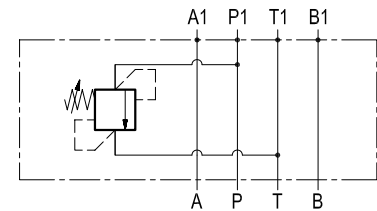
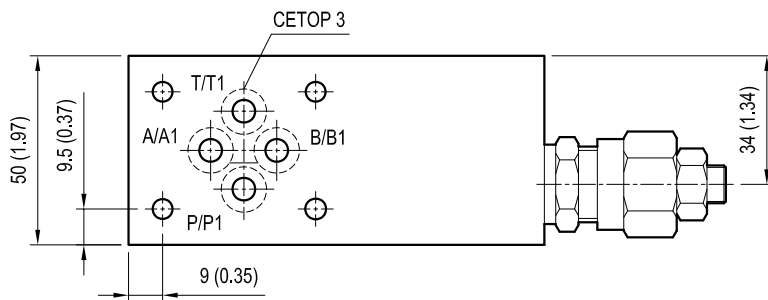
1/4

Sandwich valves, relief valve module

EM-VS30-CETOP 3

OP.01.01 - X - 29 - Z

Dimensions



[mm (inches)]

Technical data

Max flow: up to 30 l/min (8 gpm)

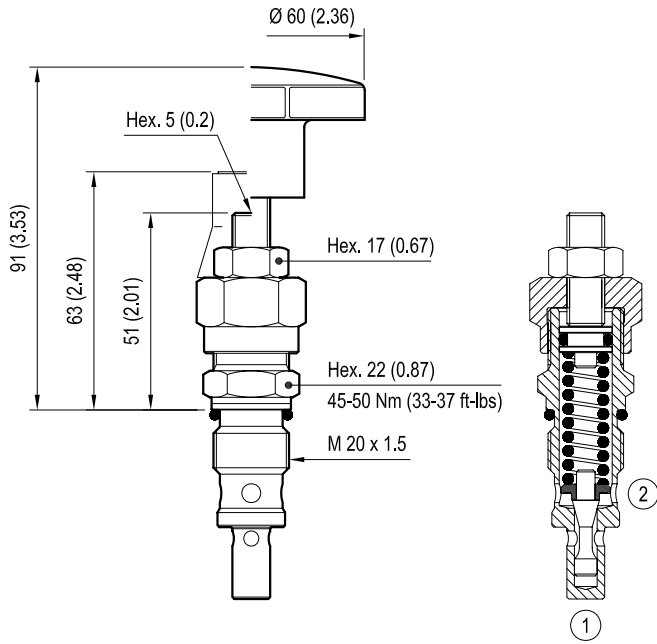
Max operating pressure: 210 bar (3000 psi)

Standard manifolds in high strength **aluminium**.

For working pressure up to 350 bar (5000 psi) and for fatigue applications with any working pressure, steel manifolds are available upon request.

Weight: 0.53 kg (1.17 lbs)

VS-30 code 04.11.18-X-99-Z



[mm (inches)]

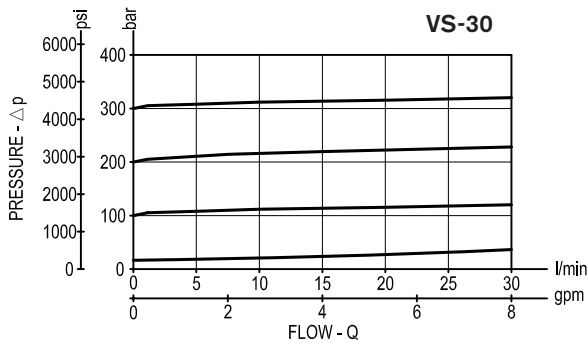
X	VS-30 ADJUSTMENTS	
03	Leakproof hex. socket screw	
04	Handknob and locknut	

OPTIONS	
Ordering code	Description
11.04.23.003	Tamper resistant cap

For other details see data sheet RE 18318-23

Z	SPRINGS			
	Adjust pressure range bar (psi)	Pressure increase bar (psi)	Standard setting bar (psi) Q = 5 l/min	
05	5-50 (75-725)	12 (174)	50 (725)	
10	30-100 (435-1450)	24 (348)	100 (1450)	
20	50-210 (725-3000)	47 (682)	200 (2900)	
35	100-350 (1450-5000)	82 (1189)	350 (5000)	

Performance graph



Ordering code

OP.01.01	X	29	Z
----------	---	----	---

Sandwich valves
relief valve module

Cartridge adjustments (see page 2)

= 03	Leakproof hex. socket screw
= 04	Handknob and locknut

Springs (see table on page 2)

Flange CETOP 3 (DOT3)

Preferred types (readily available)

Type	Material number
OP0101032910	R934002666
OP0101032920	R934002667
OP0101032935	R934002668
OP0101042910	R934003308

Type	Material number

Further types available by request

