

RE 18332-72/12.09
Replaces: RE 00199/11.07

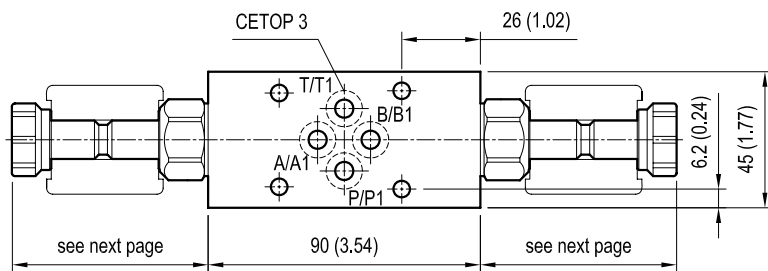
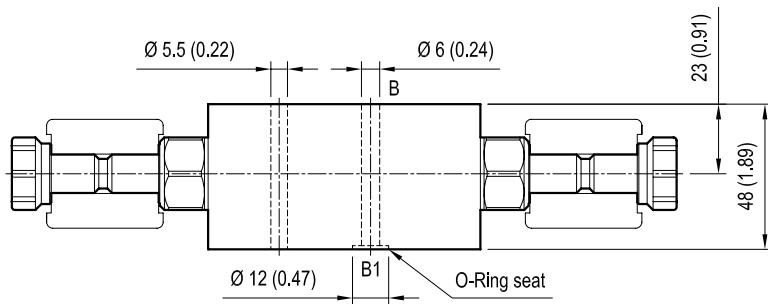
1/4

Sandwich valves, module with solenoid valve

EM-VEI8A/8I-CETOP 3-A/B

OP . 15 - K - 18 - 29 - Y

Dimensions



[mm (inches)]

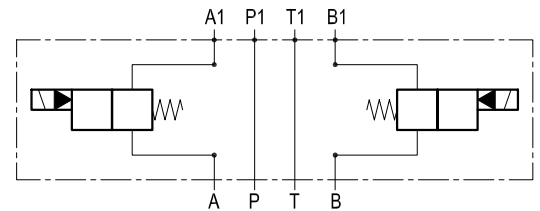
Technical data

Max flow: up to 40 l/min (11 gpm)

Max operating pressure: 210 bar (3000 psi)

Standard manifolds in high strength **aluminium**.

For working pressure up to 350 bar (5000 psi) and for fatigue applications with any working pressure, steel manifolds are available upon request.

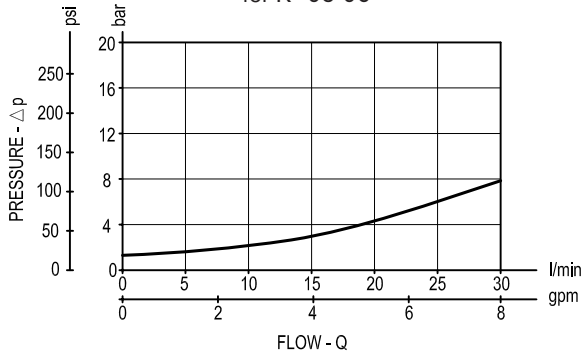


Cartridge schemes

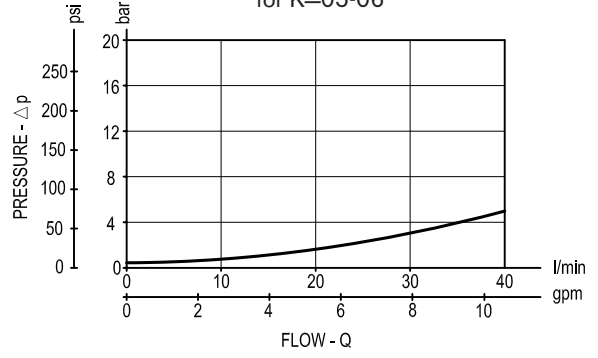
monodirectional type	bidirectional type

Performance graphs

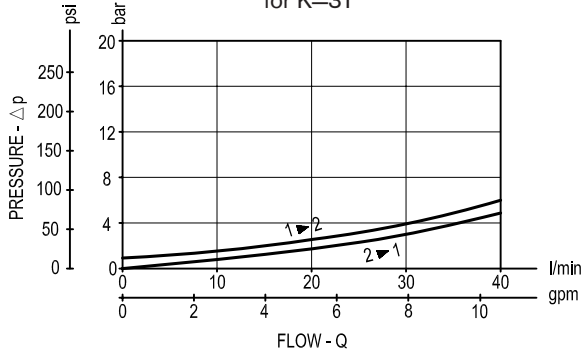
30 l/min (8 gpm)
for K=05-06



40 l/min (11 gpm)
for K=05-06



40 l/min (11 gpm)
for K=31



40 l/min (11 gpm)
for K=32

