

RE 18318-23/01.10

1/2

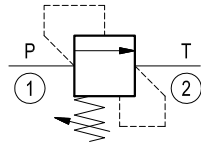
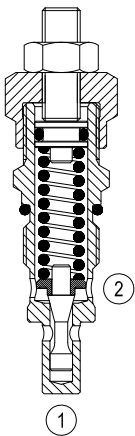
Replaces: RE 00162-02/01.06

# Relief, direct acting guided poppet type

## Special cavity, 008

VS-30

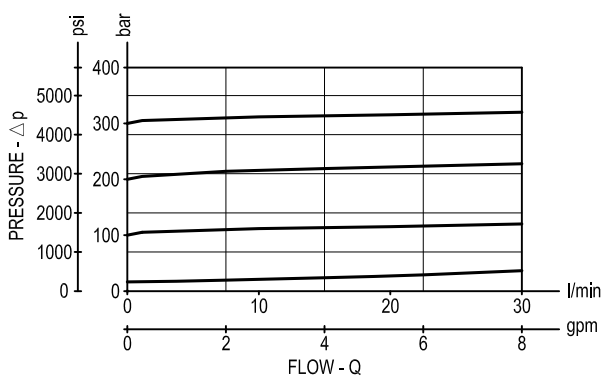
04.11.18 - X - 99 - Z



### Description

Flow is blocked from 1 to 2 until pressure increases to meet the selected valve setting, lifting the poppet from its seat and allowing relief flow through 2 to tank. Pressure at 2 is additive to the relief setting of the valve. The unique Bosch Rexroth Oil Control poppet design provides enhanced stability at all flows and pressures.

### Performance



### Technical data

Max. operating pressure port 1 (P)	bar (psi)	350 (5000)
Max. pressure admitted port 2 (T)	bar (psi)	140 (2000)
Max. flow	l/min. (gpm)	30 (8)
Max. internal leakage (*)	drops/min.	15
Fluid temperature range	°C (°F)	-30 to 100 (-22 to 212)
Installation torque	Nm (ft-lbs)	45-50 (33-37)
Weight (**)	kg (lbs)	0.17 (0.38)
Special cavity		008 see data sheet RE 18325-75
Seal kit (***)	code material no.	RG0008010000100 R930001692
Fluids		Mineral-based or synthetics with lubricating properties at viscosities of 10 to 500 mm <sup>2</sup> /s (cSt)
Filtration		Nominal value max. 10µm (NAS 8) ISO 4406 19/17/14
Installation		No restrictions
Other Technical Data		See data sheet RE 18350-50

(\*) at 80% of pressure setting

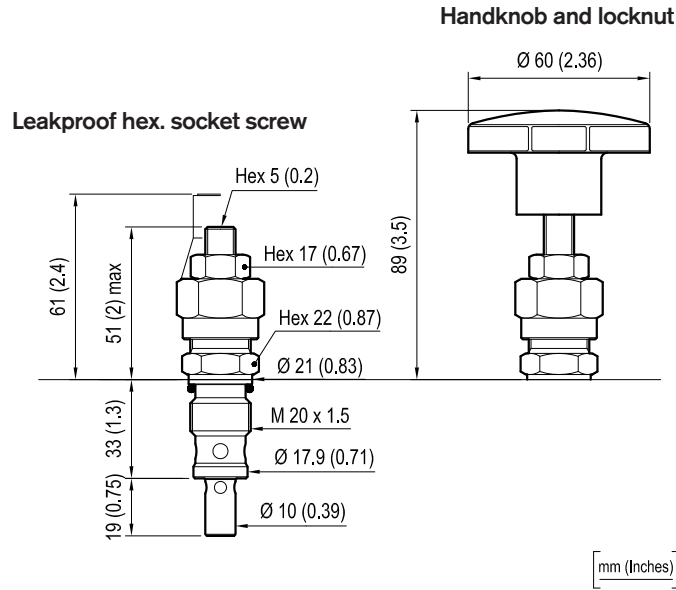
(\*\*) Standard version 03 type

(\*\*\*) Only external seals for 10 valves

**Dimensions**

**OPTION**

Tamper resistant cap  
 ordering code **11.04.23.003**  
 Mat. no. **R930000754**



**Ordering code**

<b>04.11.18</b>	<b>X</b>	<b>99</b>	<b>Z</b>	<b>00</b>	<b>*</b>
-----------------	----------	-----------	----------	-----------	----------

Series 0/A to L  
 unchanged performances and dimensions

Relief, direct acting guided poppet type

**Version and options standard**

Adjustments

= **03** Leakproof hex. socket screw

= **04** Handknob and locknut

<b>SPRINGS</b>			
	Adj. press. range bar (psi)	Pressure increase bar/turn (psi/turn)	Std. setting bar (psi) (Q=5 l/min)
= <b>05</b>	5-50 (75-725) (*)	12 (174)	50 (725)
= <b>10</b>	30-100 (435-1450)	24 (348)	100 (1450)
= <b>20</b>	50-210 (725-3000)	47 (682)	200 (2900)
= <b>35</b>	100-350 (1450-5000)	82 (1189)	350 (5000)

**Note:** Special settings available. Contact factory authorized representative for ordering code

(\*) minimum pressure setting intended with Q=5 l/min (1.3 gpm)

Type	Material number
041118039905000	R901113613
041118039910000	R901113614
041118039920000	R901226876
041118039935000	R901113617
041118049905000	R930000148

Type	Material number
041118049910000	R930000149
041118049920000	R901127942
041118049935000	R930000151