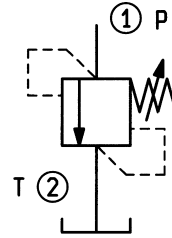
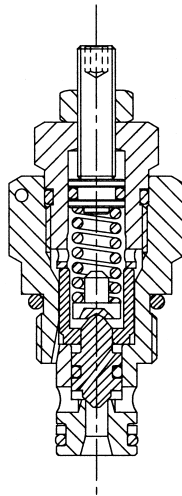
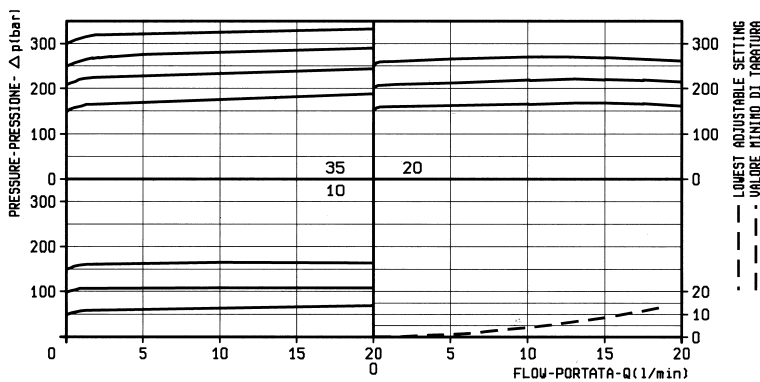


CAVITA' - CAVITY 018/E



DATI TECNICI / TECHNICAL DATA

Coppia di serraggio Installation torque	50-59 Nm
Pressione di lavoro max. Max. working pressure	350 bar
Portata max. Flow max.	20 l/min
Peso Weight	0.17 kg



X	REGOLAZIONI ADJUSTMENTS	
03	vite esterna esagono incassato leakproof hex. socket screw	
04	volantino e dado handknob and locknut	
	cappello per piombatura sealing cap codice / ordering code 03.05.01.002	

Z	MOLLE / SPRINGS				
	Campo taratura min - max bar Adj. press. range bar	Incremento press. bar / giro vite Press. increase bar / turn	Taratura standard bar (Q = 5 l/min) Std. setting bar (Q = 5 l/min)	Cod. ordinazione Ordering code	Colore Colour
05	30-50	8	50	03.51.01.133	nero black
10	40-150	38	100	03.51.01.121	blu blue
20	80-210	77	200	03.51.01.122	verde green
35	150-350	146	350	03.51.01.132	giallo yellow

Y	ATTACCHI / PORT SIZE
99	Cartuccia/Cartridge