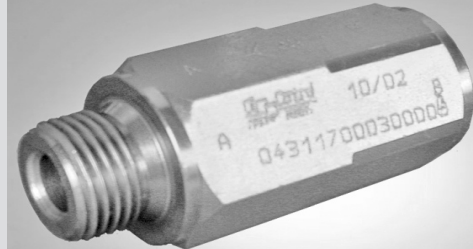


Check valves

Poppet type with male-female threaded sleeve

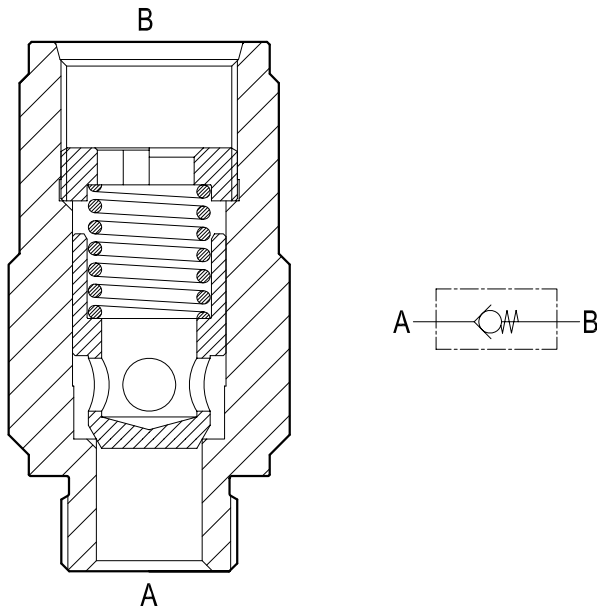


VU-MF (G1 - G1-1/4)

04.31.17.00-Y-Z

Description

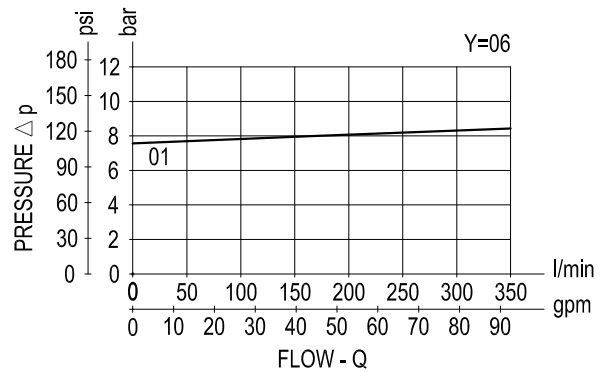
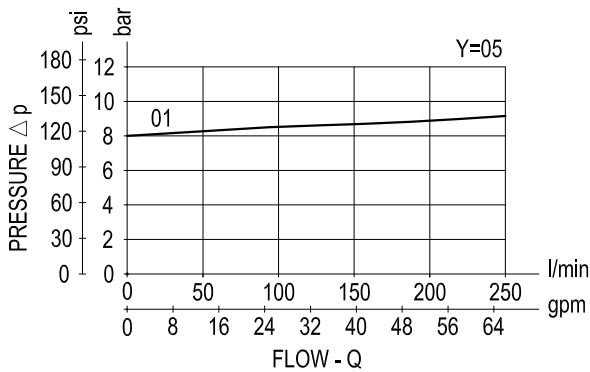
Flow is always allowed to pass from A to B when pressure at A rises above the spring bias pressure and the poppet is pushed from the seat. The valve is normally closed (checked) from B to A. Precision machining and hardening processes allow virtually leak free performance in the checked condition.



Technical data

Ports	Pressure P max bar (psi)	Flow Q max l/min (gpm)	Weight kg (lbs)
G 1	350 (5000)	250 (66)	0.90 (1.98)
G 1-1/4	350 (5000)	350 (93)	1.50 (3.31)

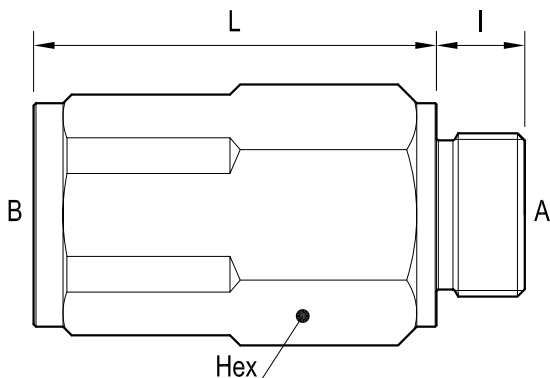
Performance



Δp curves vs. flow in "A-B" free flow direction

For cracking pressure range refer to the specific table.

Dimensions



Ports size / Dimensions

Y	Ports A - B	L mm (inches)	I mm (inches)	Hex mm (inches)
05	G 1	82 (3.23)	0.71 (46)	46 (1.81)
06	G 1-1/4	102 (4.02)	0.79 (55)	55 (2.17)

Springs

Z	Cracking pressure		Ordering code	Ordering code
	bar	psi	Y=05	Y=06
01	8	116	03.51.01.430	03.51.01.429

Advantages

- Very compact design and inline mounting for space saving.
- Four sizes (see also previous page) provide great adaptability to the system.
- Mounting position is unrestricted.
- Very low Δp in the free flow direction.

Ordering code

04.31.17.00	Y	Z
--------------------	----------	----------

Poppet type with male-female threaded sleeve

Springs see table "Z"

Ports size / Dimensions see table "Y"

Type	Material number	Type	Material number	Type	Material number
043117000501000	R930000446				
043117000601000	R930000447				