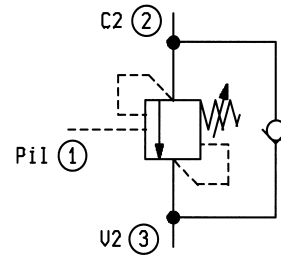
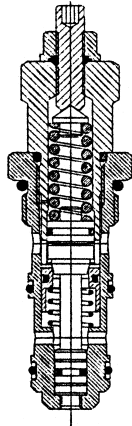
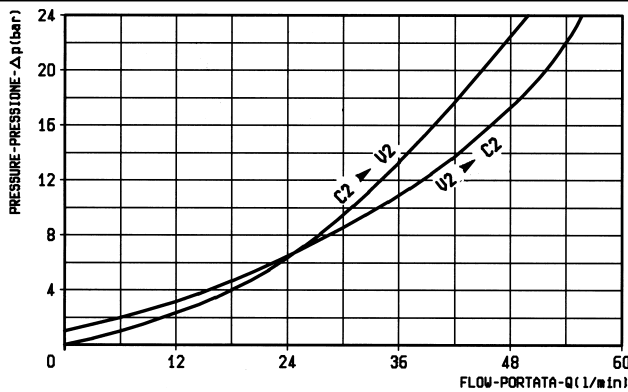


CAVITA' - CAVITY N. 063



**DATI TECNICI / TECHNICAL DATA**

Coppia di serraggio Installation torque	116-128 Nm
Pressione max. Max. pressure	350 bar
Taratura della valvola: almeno 1.3 volte superiore alla pressione indotta dal carico Pressure setting: at least 1.3 times the load induced pressure	
Portata max. Flow max.	60 l/min
Cappello per piombatura Sealing Cap	Codice/Ordering code 11.04.23.002
Peso Weight	0.25 kg



**X RAPPORTO DI PILOTAGGIO  
PILOT RATIO**

**03** 4.2 : 1

**MOLLE / SPRINGS**

Z	Campo taratura min - max bar Adj. press. range bar	Incremento press. bar / giro vite Press. increase bar / turn	Taratura standard bar (Q = 5 l/min) Std. setting bar (Q = 5 l/min)	Cod. ordinazione Ordering code	Colore Colour
20	60-210	56	200	03.51.01.106	verde green
35	100-350	138	350	03.51.01.171	giallo yellow

**Y ATTACCHI / PORT SIZE**

**99** Cartuccia/Cartridge