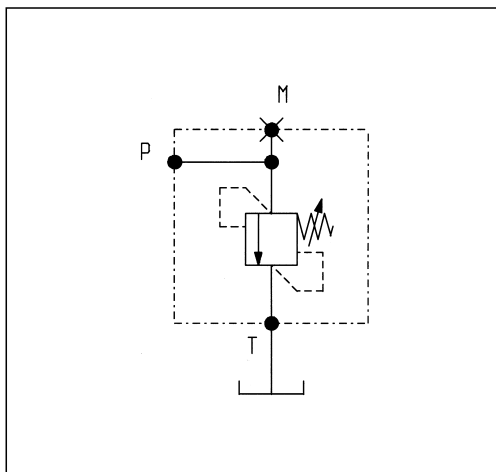
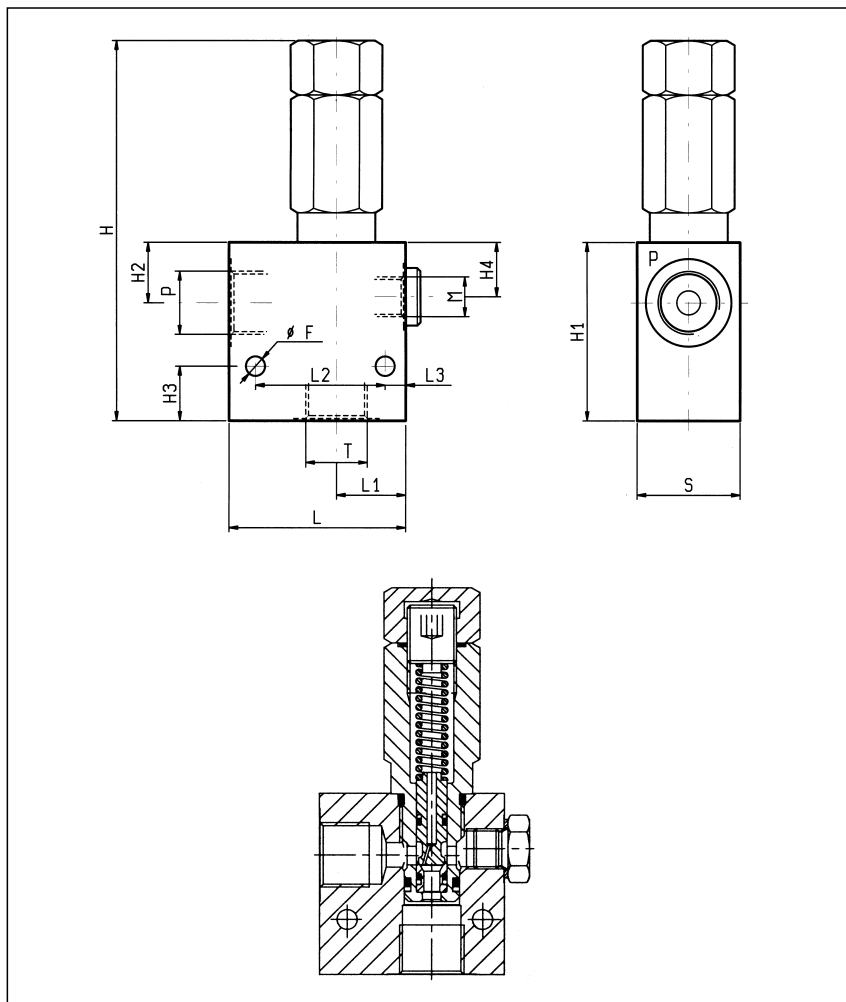


VSDC-50

05.12.01 - X - Y - Z

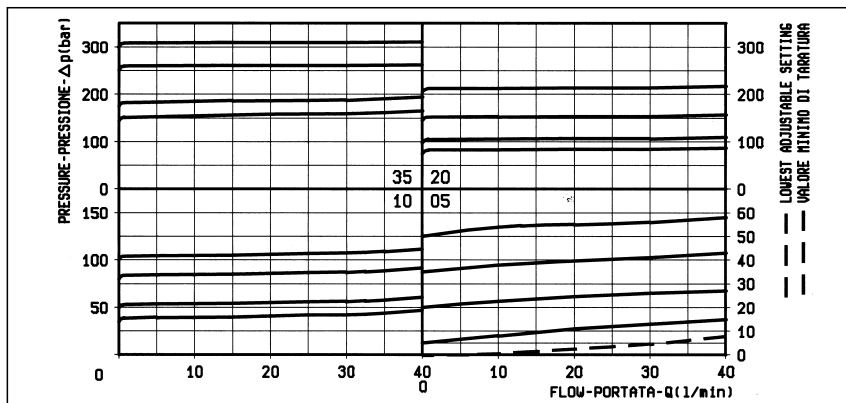


DATI TECNICI / TECHNICAL DATA

Pressione di lavoro max. 350 bar  
 Max. working pressure 350 bar

Portata massima vedi diagramma  
 Flow see performance graph

35	8	44	30	60	18	18	20	59	126	6.5							1/2	0.62
35	7	44	23.5	60	20	8	20	49	116	6.5							3/8	0.58
<b>S</b>	<b>L3</b>	<b>L2</b>	<b>L1</b>	<b>L</b>	<b>H4</b>	<b>H3</b>	<b>H2</b>	<b>H1</b>	<b>H</b>	<b>F</b>							<b>Y</b>	Peso kg Weight kg



<b>X</b>	<b>REGOLAZIONI ADJUSTMENTS</b>
<b>03</b>	vite esterna esagono incassato leakproof hex. socket screw 
	cappello per piombatura sealing cap codice / ordering code 03.05.01.001 

<b>Z</b>	<b>MOLLE / SPRINGS</b>				
	Campo taratura min - max bar Adj. press. range bar	Incremento press. bar / giro vite Press. increase bar / turn	Taratura standard bar (Q = 5 l/min) Std. setting bar (Q = 5 l/min)	Cod. ordinazione Ordering code	Colore Colour
<b>05</b>	5-50	15	50	03.51.01.077	nero black
<b>10</b>	30-100	30	100	03.51.01.076	blu blue
<b>20</b>	60-210	60	200	03.51.01.075	verde green
<b>35</b>	100-350	100	350	03.51.01.059	giallo yellow

<b>Y</b>	<b>ATTACCHI / PORT SIZE</b>	
	P-T	M
<b>02</b>	G 3/8	G 1/4
<b>03</b>	G 1/2	G 1/4