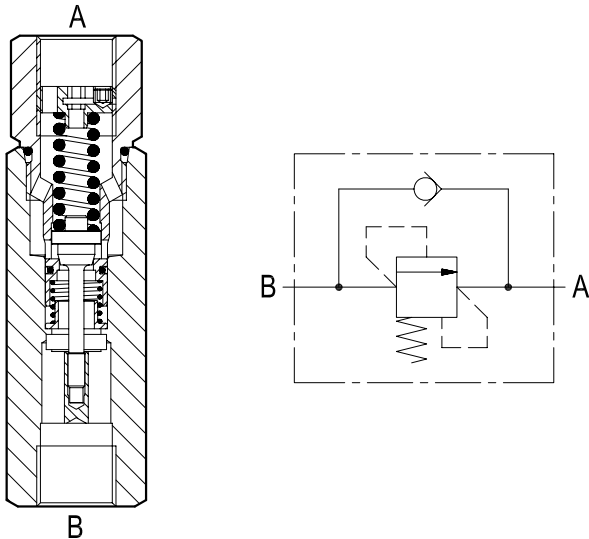
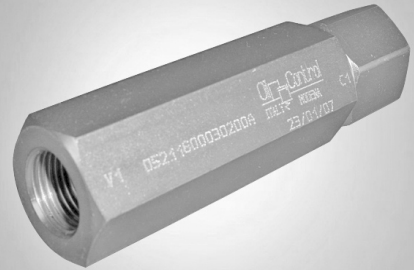


Sequence valves
Direct acting poppet type

VSQ-30-LM (G1/2)

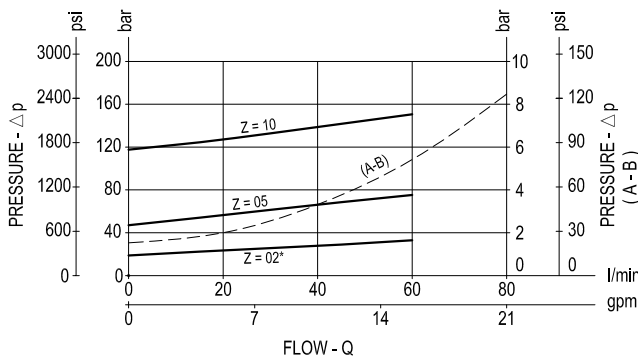
05.21.16.00.03-Z



Description

They are composed by a relief valve (opening "B-A") with hydraulic dampening, and by a reverse flow annular check valve "A-B". Initially the flow goes to a first line connected in parallel to the B side, not shown here, and pressure increases until reaching the selected relief setting; then the relief valve opens and the second circuit is supplied out of A port, while the actuator connected to the B side remains pressurized. The incorporated check valve allows the reverse motion of the actuators which happens without specific control of the sequence, only depending from the load/pressure conditions. Note that pressure at A needed to operate the second actuator is additive to the relief setting, and, for this reason, this valve is successfully employed to energize a secondary actuator which only requires low pressure.

Performance



Advantages

- Very compact design and inline mounting for space saving.
- Mounting position is unrestricted.
- Low Δp for B-A flow.
- Different springs available for different pressure ranges (see the "Z" table).

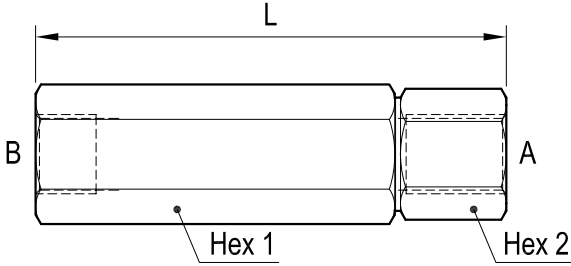
Technical data

Pressure P max bar (psi)	Flow Q max l/min (gpm)	Weight kg (lbs)
350 (5000)	80 (21)	0.6 (1.32)

Steel body, zinc plated

Pressure drop curves are shown with zero back pressure on "A" port.

Dimensions



Ports size / Dimensions

Ports A-B	L mm (inches)	Hex 1 mm (inches)	Hex 2 mm (inches)
G 1/2	124 (4.88)	32 (1.26)	30 (1.18)

Springs					
Z	Adj. press. range bar (psi)	Pres. increase bar/turn (psi/turn)	Std. setting bar (psi) Q=5 l/min	Ordering code	Colour
02*	10-30 (145-435)	9 (131)	20 (290)	03.51.01.155	green
05	25-70 (360-1000)	21 (305)	50 (725)	03.51.01.106	green
10	30-120 (435-1750)	47 (682)	120 (1750)	03.51.01.171	yellow

The relief setting is adjustable by turning the internal ring nut: to turn the nut loosen first the little locking screw, then tighten it again after the adjustment. For the spring selection, refer to the table.

(*) Z= 02 is only supplied for special applications.

This valve is successfully employed when the pressure needed to move the secondary actuator is not very high.

Applications

They are employed to control the sequence of two or more cylinders or motors, when the second actuator must be allowed to move only after the first actuator has performed a certain function. The incorporated check valve allows free reverse motion without specific control of the sequence.

Ordering code

05.21.16.00.03	Z
-----------------------	----------

Direct acting poppet type

Type	Material number	Type	Material number	Type	Material number
05211600030200A	R901187620				
05211600030500A	R930001441				
05211600031000A	R930001444				