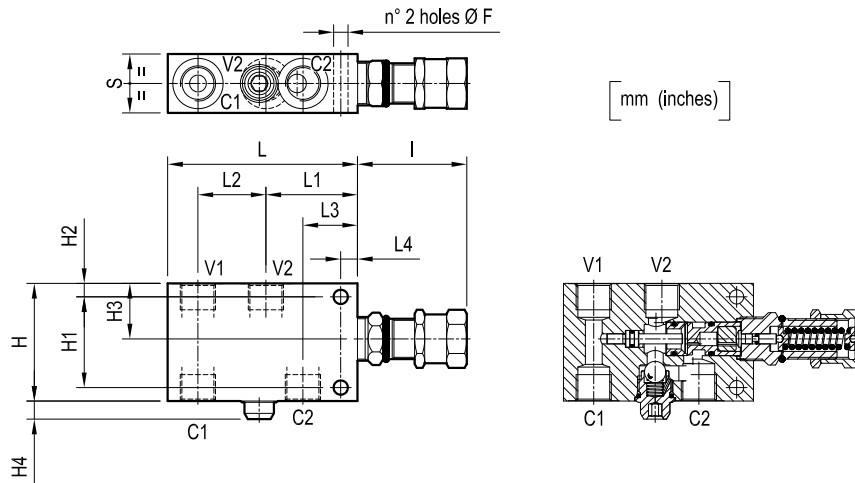


Dimensions



[mm (inches)]

40 (1.58)	10 (0.39)	34 (1.34)	54.5 (2.15)	62.5 (2.46)	135 (5.32)	65 (2.56)	11 (0.43)	38 (1.5)	9.5 (0.37)	70 (2.76)	89 (3.5)	10.5 (0.41)	G 3/4	1.42 (3.13)
35 (1.38)	10 (0.39)	32.5 (1.28)	40.5 (1.6)	54.5 (2.15)	113 (4.55)	65 (2.56)	11 (0.43)	33.5 (1.32)	7.5 (0.3)	54 (2.13)	70 (2.76)	8.5 (0.34)	G 1/2	0.9 (1.98)
S	L4	L3	L2	L1	L	I	H4	H3	H2	H1	H	F	Y	Weight kg (lbs)

Ordering code

05.41.06	X	Y	Z
-----------------	----------	----------	----------

Single counterbalance,
relief compensated

Pilot ratio

= 02 8.2:1

= 10 3.2:1

SPRINGS		
Adj. pressure range bar (psi)	Pres. increase bar/turn (psi/turn)	Std. setting Q=5 (l/min.) bar (psi)
= 20 60-210 (870-3000)	54 (783)	200 (2900)
= 35 100-350 (1450-5000)	95 (1378)	350 (5000)

Port sizes	V1-V2	C1-C2
= 03	G 1/2	G 1/2
= 04	G 3/4	G 3/4

Type	Material number
054106020320000	R930001670
05410602033500A	R930001671
054106020420000	R930001674
05410602043500A	R930001675
054106100320000	R930001678
05410610033500A	R930001680
054106100420000	R930001941
054106100435000	R930001687

Type	Material number