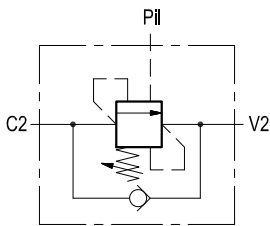
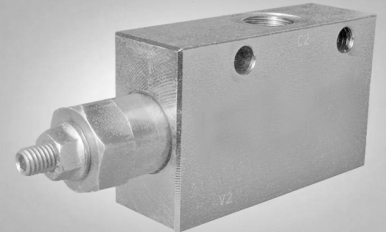


RE 18307-37/04.10 1/2
Replaces: RE 00171/02.07

Single counterbalance

A-VBSO-SE-30

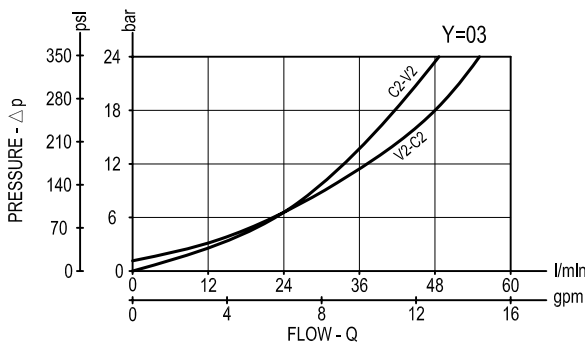
08.41.01 - X - Y - Z



Description

When pressure at V2 rises above the spring bias pressure, the check seat is pushed away from the piston and flow is allowed from V2 to C2. When load pressure at C2 rises above the pressure setting, the direct operated, differential area, relief function is activated and flow is relieved from C2 to V2. With pilot pressure at Pil, the pressure setting is reduced in proportion to the stated ratio of the valve, until opening and allowing flow from C2 to V2. The spring chamber is drained to V2, and any back-pressure at V2 is additive to the pressure setting in all functions.

Performance



Technical data

Hydraulic

Max. operating pressure bar (psi) 350 (5000)

Max. flow l/min (gpm) 60 (16)

Relief setting: at least 1.3 times the highest expected load.

General

Manifold material Steel

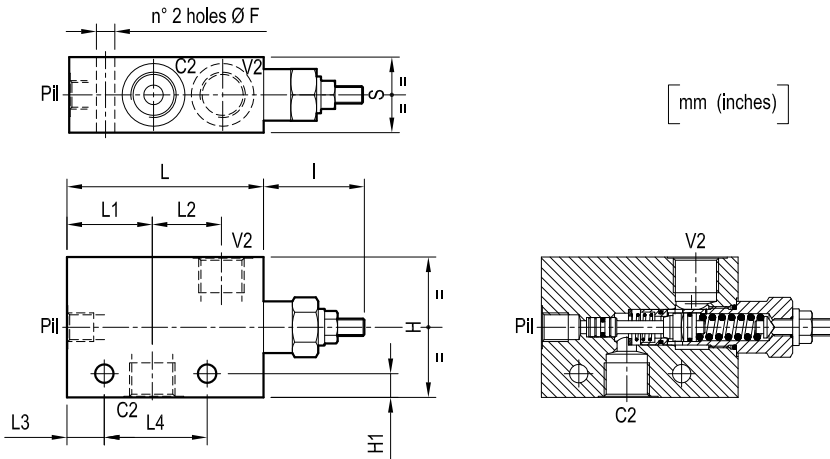
Weight see "Dimensions"

Fluid temperature range °C (°F) between -30 (-22) and +100 (212)

Other technical data see data sheet RE 18350-50

Note: for applications outside these parameters, please consult us.

Dimensions



[mm (inches)]

35 (1.38)	47.6 (1.87)	17.8 (0.7)	31 (1.22)	39.3 (1.55)	91 (3.58)	47 (1.85)	11 (0.43)	65 (2.56)	8.5 (0.34)						G 1/2	1.5 (3.29)
30 (1.18)	47.6 (1.87)	17.8 (0.7)	31 (1.22)	39.3 (1.55)	91 (3.58)	47 (1.85)	7 (0.28)	55 (2.17)	8.5 (0.34)						G 3/8	1.1 (2.38)
30 (1.18)	47.6 (1.87)	17.8 (0.7)	31 (1.22)	39.3 (1.55)	91 (3.58)	47 (1.85)	7 (0.28)	55 (2.17)	8.5 (0.34)						G 1/4	1.1 (2.38)
S	L4	L3	L2	L1	L	I	H1	H	F						Y	Weight kg (lbs)

Ordering code

08.41.01	X	Y	Z
-----------------	----------	----------	----------

Single counterbalance

Pilot ratio

= 03 4.2:1

Port sizes	V2	C2	Pil
= 09	G 1/4	G 1/4	G 1/4
= 02	G 3/8	G 3/8	G 3/8
= 03	G 1/2	G 1/2	G 1/4

Type	Material number
08410103022000B	R930003264
08410103023500B	R987234306
08410103032000A	R930003270
08410103033500B	R930003271
084101030920000	R930003272
08410103093500B	R930003273

	SPRINGS		
	Adj. pressure range bar (psi)	Pres. increase bar/turn (psi/turn)	Std. setting Q=5 (l/min.) bar (psi)
= 20	60-210 (870-3000)	56 (812)	200 (2900)
= 35	100-350 (1450-5000)	138 (2001)	350 (5000)

Tamper resistant cap
code 11.04.23.002
R930000752



Type	Material number