

RE 18307-48/04.10

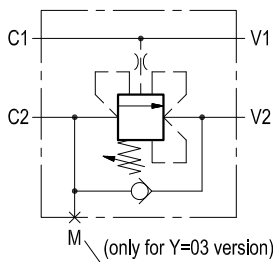
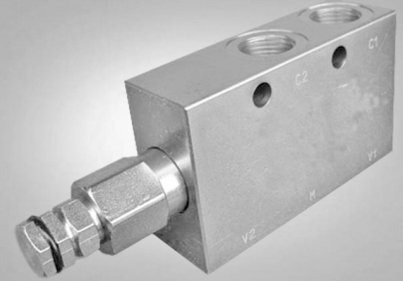
1/2

Replaces: RE 00171/02.07

Single counterbalance, relief compensated

A-VBSO-SE-CC-30-PL

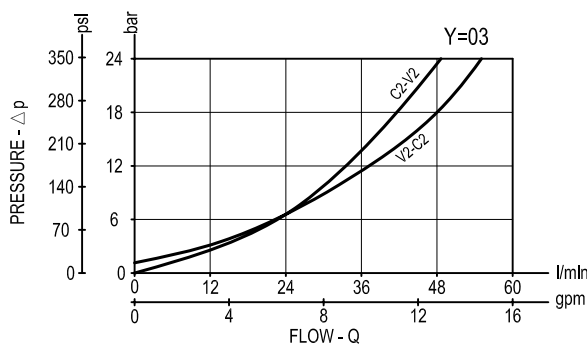
08.45.17 - X - Y - Z



Description

When pressure at V2 rises above the spring bias pressure, the check seat is pushed away from the piston and flow is allowed from V2 to C2. When load pressure at C2 rises above the pressure setting flow is relieved from C2 to V2. With pilot pressure at V1–C1, the pressure setting is reduced in proportion to the stated ratio of the valve, until opening and allowing flow from C2 to V2. The spring chamber is drained to V2. The valve applies a balanced piston design allowing relief operation at the valve setting independent of back-pressure at V2. However, the piloted opening of the valve remains subject to additive pressure at port V2.

Performance



Technical data

Hydraulic

Max. operating pressure	bar (psi)	350 (5000)
-------------------------	-----------	------------

Max. flow	l/min (gpm)	60 (16)
-----------	-------------	---------

Relief setting: at least 1.3 times the highest expected load.

General

Manifold material	Steel
-------------------	-------

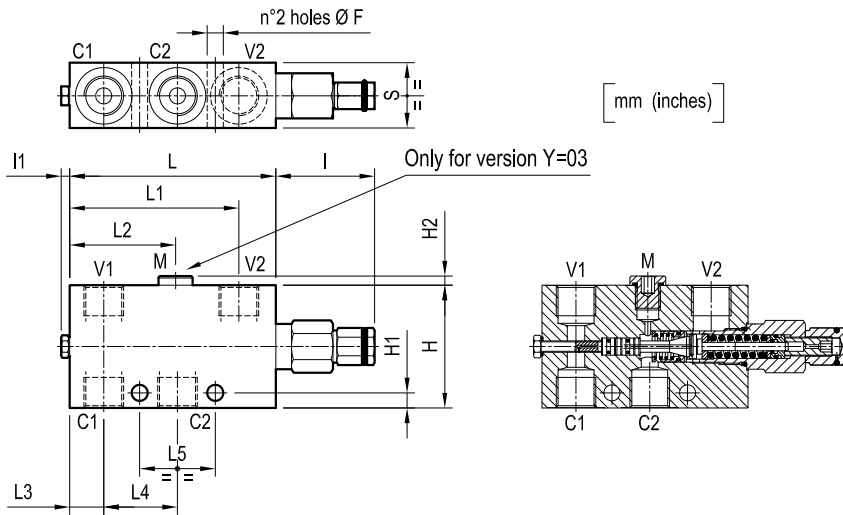
Weight	see "Dimensions"
--------	------------------

Fluid temperature range	°C (°F)	between -30 (-22) and +100 (212)
-------------------------	---------	----------------------------------

Other technical data	see data sheet RE 18350-50
----------------------	----------------------------

Note: for applications outside these parameters, please consult us.

Dimensions



35 (1.38)	40 (1.58)	39.3 (1.55)	18 (0.71)	55.3 (2.18)	88.8 (3.54)	109 (4.29)	4.5 (0.18)	52.5 (2.07)	5 (0.2)	8 (0.32)	65 (2.56)	8.5 (0.34)			G 1/2	1.85 (4.08)
30 (1.18)	40 (1.58)	39.3 (1.55)	18 (0.71)	-	88.3 (3.48)	109 (4.29)	4.5 (0.18)	52.5 (2.07)	5 (0.2)	8 (0.32)	55 (2.17)	8.5 (0.34)			G 3/8	1.33 (2.93)
S	L5	L4	L3	L2	L1	L	I1	I	H2	H1	H	F			Y	Weight kg (lbs)

Ordering code

08.45.17	X	Y	Z
-----------------	----------	----------	----------

Single counterbalance,
relief compensated

Pilot ratio

= 03 4.2:1

Port sizes	V1-V2	C1-C2	M
= 02	G 3/8	G 3/8	/
= 03	G 1/2	G 1/2	G 1/4

SPRINGS			
	Adj. pressure range bar (psi)	Pres. increase bar/turn (psi/turn)	Std. setting Q=5 (l/min.) bar (psi)
= 20	60-210 (870-3000)	75 (1088)	200 (2900)
= 35	100-350 (1450-5000)	165 (2393)	350 (5000)

Type	Material number
084517030220000	R930001936
08451703023500A	R930003486
084517030320000	R930001176
08451703033500B	R930003488

Type	Material number