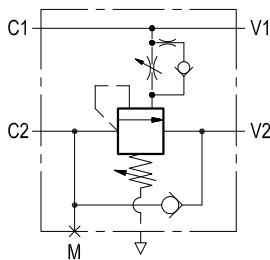


**RE 18307-52/04.10**  
 Replaces: RE00171/02.07

1/2

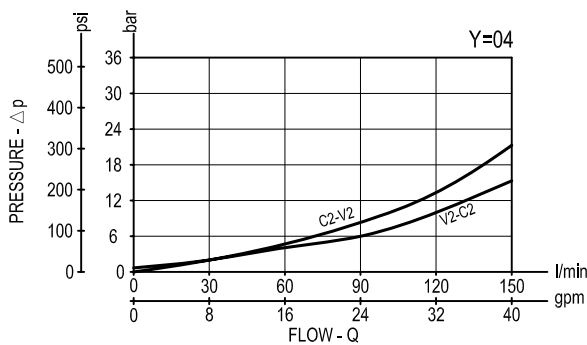
# Single counterbalance, vented

**A-VBSO-SE-CCAP-33-PL**
**08.45.86 - X - Y - Z**


## Description

When pressure at V2 rises above the spring bias pressure, the check seat is pushed away from the piston and flow is allowed from V2 to C2. When load pressure at C2 rises above the pressure setting, the direct-acting, differential area, relief function is activated and flow is relieved from C2 to V2. With pilot pressure at V1-C1, the pressure setting is reduced in proportion to the stated ratio of the valve, until opening and allowing flow from C2 to V2. The spring chamber is vented to atmosphere allowing operation of all functions independent of back-pressure at V2.

## Performance



## Technical data

### Hydraulic

Max. operating pressure	bar (psi)	350 (5000)
-------------------------	-----------	------------

Max. flow	l/min (gpm)	150 (40)
-----------	-------------	----------

Relief setting: at least 1.3 times the highest expected load.

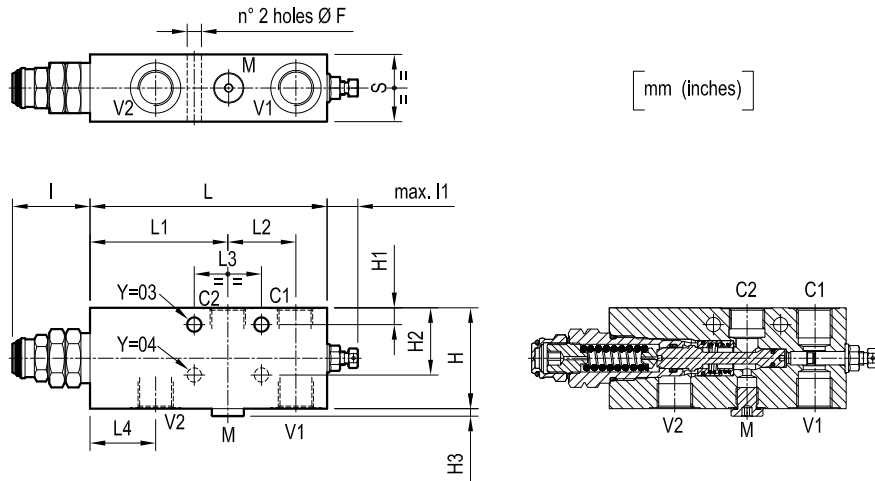
The pilot line includes adjustable hydraulic damping, for fine tuning of stability and response.

### General

Manifold material	Steel
Weight	see "Dimensions"
Fluid temperature range	°C (°F) between -30 (-22) and +100 (212)
Other technical data	see data sheet RE 18307-50

**Note:** for applications outside these parameters, please consult us.

Dimensions



[ mm (inches) ]

40 (1.58)	39 (1.54)	40 (1.58)	43 (1.69)	82 (3.23)	147 (5.79)	13.5 (0.53)	18.5 (0.73)	46.5 (1.83)	4.5 (0.18)	60 (2.36)	-	80 (3.15)	10.5 (0.41)	G 3/4	3.1 (6.8)
40 (1.58)	39 (1.54)	40 (1.58)	40 (1.58)	82 (3.23)	141 (5.55)	13.5 (0.53)	17.5 (0.69)	46.5 (1.83)	4.5 (0.18)	-	10 (0.39)	60 (2.36)	8.5 (0.34)	G 1/2	2.4 (5.3)
S	L4	L3	L2	L1	L	I1	I1	I	H3	H2	H1	H	F	Y	Weight kg (lbs)

Ordering code

**08.45.86** | **X** | **Y** | **Z**

Single counterbalance, vented

Pilot ratio

= 13 4:1

= 15 8:1

Port sizes

V1 - V2

C1 - C2

M

= 03

G 1/2

G 1/2

G 1/4

= 04

G 3/4

G 3/4

G 1/4

SPRINGS

		Adj. pressure range bar (psi)	Pres. increase bar/turn (psi/turn)	Std. setting Q=5 (l/min.) bar (psi)
= 35	for X=13	100-350 (1450-5000)	110 (1595)	350 (5000)
	for X=15	150-350 (2200-5000)	84 (1218)	350 (5000)

Type	Material number
08458613033500D	R930003562
08458613043500C	R987262555
08458615033500C	R930003568
08458615043500C	R930003569

Type	Material number