

RE 18309-33/04.10

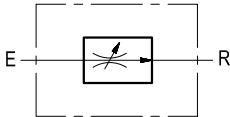
1/2

Replaces: RE 00171/02.07

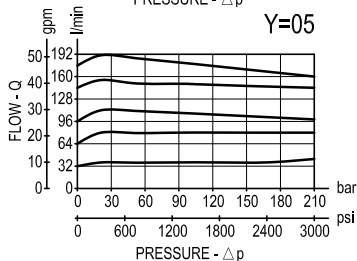
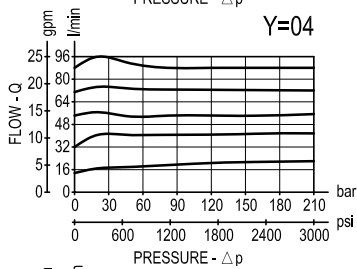
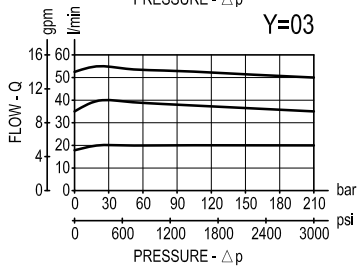
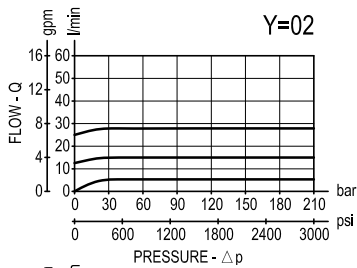
Flow regulator, 2-way, pressure compensated

VRFC2

OM.22.03 - X - Y



Performance



Description

A constant flow rate, regardless of system pressures, is established from E to R, while a minimum pressure differential of approximately 5 bar (70 psi) exists between the two ports. Output flow can be varied from zero (closed) to the nominal maximum rating. Reverse flow from R to E is limited by the selected opening of the restrictor and is not pressure compensated.

Technical data

Hydraulic

Operating pressure	bar (psi)	up to 210 (3000)
--------------------	-----------	------------------

Q = max inlet flow "E" port (see "Dimensions")

Flow range adjustment : 0 - 3 turns

General

Manifold material	Aluminium
-------------------	-----------

Note: aluminium bodies are often strong enough for operating pressures exceeding 210 bar (3000 psi), depending from the fatigue life expected in the specific application. If in doubt, consult our Service Network.

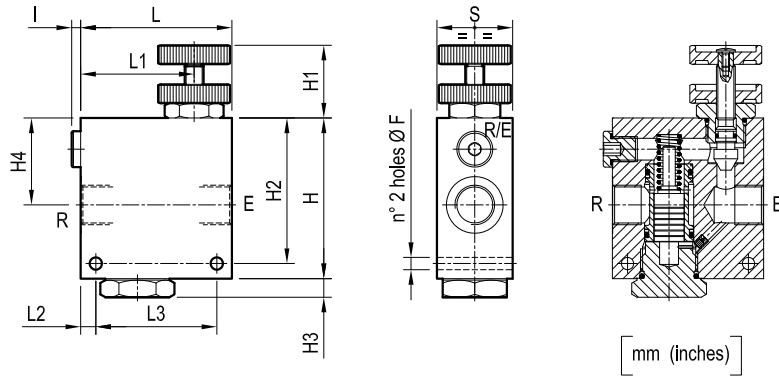
Weight	see "Dimensions"
--------	------------------

Fluid temperature range	°C (°F)	between -30 (-22) and +100 (212)
-------------------------	---------	----------------------------------

Other technical data	see data sheet RE 18350-50
----------------------	----------------------------

Note: for applications outside these parameters, please consult us.

Dimensions



[mm (inches)]

50 (1.97)	82 (3.23)	8 (0.32)	78 (3.07)	108 (4.25)	5 (0.2)	62 (2.44)	10 (0.39)	98 (3.86)	40 (1.58)	108 (4.25)	8.5 (0.34)		190 l/min 50 gpm	G 1	1.94 (4.28)
50 (1.97)	82 (3.23)	8 (0.32)	75 (2.95)	100 (3.94)	5 (0.2)	56 (2.21)	10 (0.39)	90 (3.54)	40 (1.58)	100 (3.94)	8.5 (0.34)		90 l/min 24 gpm	G 3/4	1.65 (3.64)
40 (1.58)	64 (2.52)	8 (0.32)	60 (2.36)	80 (3.15)	5 (0.2)	46 (1.81)	10 (0.39)	77 (3.03)	40 (1.58)	85 (3.35)	6.5 (0.26)		55 l/min 15 gpm	G 1/2	0.88 (1.94)
40 (1.58)	64 (2.52)	8 (0.32)	60 (2.36)	80 (3.15)	5 (0.2)	46 (1.81)	10 (0.39)	77 (3.03)	40 (1.58)	85 (3.35)	6.5 (0.26)		30 l/min 8 gpm	G 3/8	0.88 (1.94)
S	L3	L2	L1	L	I	H4	H3	H2	H1	H	F		Q	Y	Weight kg (lbs)

Ordering code

OM.22.03 | **X** | **Y**

Flow regulator,
2-way, pressure compensated

Adjustments

= **70** Handknob and locknut



= **80** Screw and locknut



= **40** Graduated handknob



Port sizes	E - R
= 02	G 3/8
= 03	G 1/2
= 04	G 3/4
= 05	G 1

Type	Material number
OM2203700200000	R930004181
OM2203700300000	R930004182
OM2203700400000	R930004183
OM2203700500000	R930004184
OM2203800200000	R930004190
OM2203800300000	R930004192
OM2203800400000	R930004193
OM2203800500000	R930004194

Type	Material number
OM2203400200000	R930004169
OM2203400300000	R930004170
OM2203400400000	R930004171
OM2203400500000	R930004172

Bosch Rexroth Oil Control S.p.A.
Via Leonardo da Vinci 5
P.O. Box no. 5
41015 Nonantola – Modena, Italy
Tel. +39 059 887 611
Fax +39 059 547 848
motion-control-valves@oilcontrol.com
www.boschrexroth.com

© This document, as well as the data, specifications and other information set forth in it, are the exclusive property of Bosch Rexroth Oil Control S.p.a.. It may not be reproduced or given to third parties without its consent.

The data specified above only serve to describe the product. No statements concerning a certain condition or suitability for a certain application can be derived from our information. The information given does not release the user from the obligation of own judgment and verification. It must be remembered that our products are subject to a natural process of wear and aging.

Subject to change.