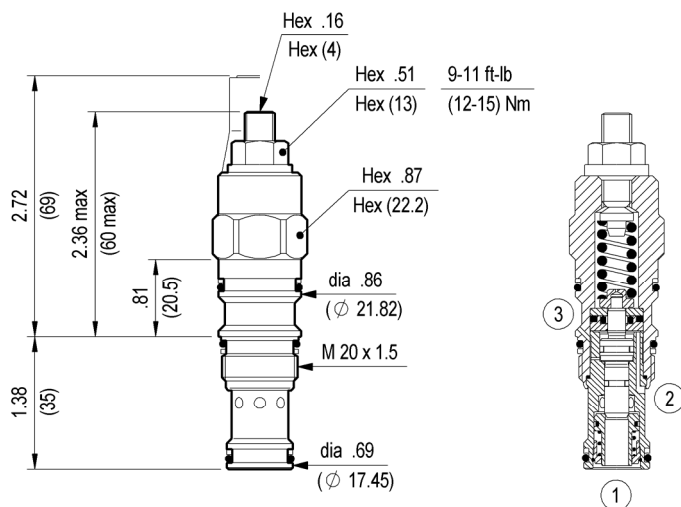




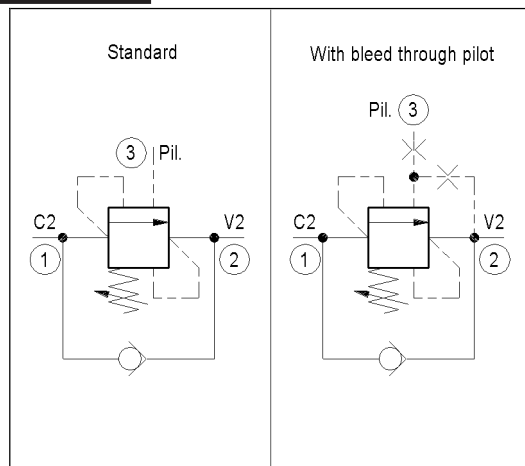
**COUNTERBALANCE, STANDARD POPPET TYPE
DIFFERENTIAL AREA
SUN CAVITY INTERCHANGE**

VBSN-08U T-11A 04.52.30 - X - 20 - Z



Inches
(mm)

When pressure at 2 rises above the spring bias pressure, the check seat is pushed away from the piston and flow is allowed from 2 to 1. When load pressure at 1 rises above the pressure setting, the direct-acting, differential area relief function is activated and flow is relieved from 1 to 2. With pilot pressure at 3, the pressure setting is reduced in proportion to the stated ratio of the valve, until fully open with free-flow from 1 to 2. The spring chamber is drained to 2, and any back-pressure at 2 is additive to the pressure setting in all functions.



TECHNICAL DATA

Max. pressure: 5000 psi (350 bar)

Max. flow: 16 gpm (60 l/min)

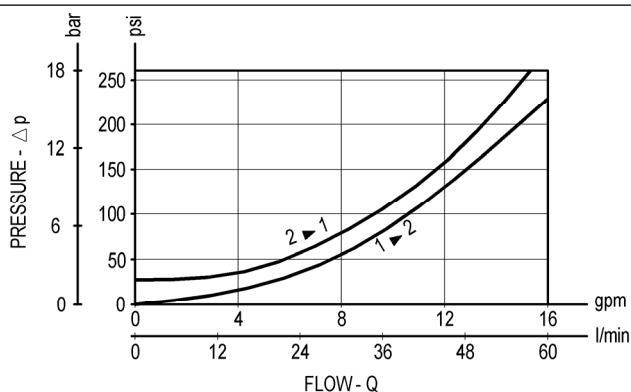
Cavity : SUN T-11A

External seal kit : see page A11.211

Installation torque : 30-37 ft-lb (40-50 Nm)

Weight: 0.419 lbs (0.190 Kg)

Pressure setting: at least 1.3 times the load induced pressure



X	PILOT RATIO	
03	3 : 1	Standard version
10	8 : 1	Standard version
31	1.5 : 1	With bleed through pilot

Z		SPRINGS		
		Adj. press. range psi (bar)	Press. increase psi / turn (bar/turn)	Standard setting psi (bar)
X = 03	10	500-1500 (35-105)	479 (33)	1000 (70) cracking pressure
	20	1000-3000 (70-210)	1958 (135)	2900 (200) (Q=5 l/min)
	35	2000-5000 (140-350)	2842 (196)	5000 (350) (Q=5 l/min)
X = 10	20	1000-3000 (70-210)	754 (52)	2900 (200) (Q=5 l/min)
	35	2000-5000 (140-350)	1291 (89)	5000 (350) (Q=5 l/min)
X = 31	20	1000-3000 (70-210)	1958 (135)	2900 (200) (Q=5 l/min)
	35	2000-5000 (140-350)	2842 (196)	5000 (350) (Q=5 l/min)

OPTIONS	
Ordering code	Description
11.04.23.002	 Tamper resistant cap
Special settings available. Contact factory authorized representative for ordering code.	