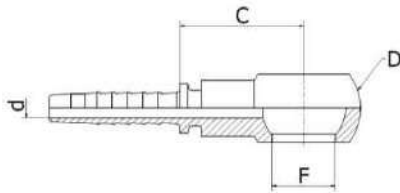


O1

BSP BANJO

OCCHIO A PRESSARE BSP

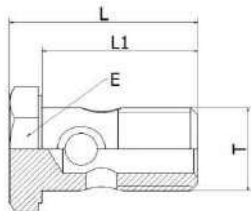


Part nr./ Codice	hose ID			F			D		d		cut-off C		
	[in]	[mm]	size	[in]	[mm]	size	[in]	[mm]	[in]	[mm]	[in]	[mm]	
O1-0302	3/16"	4,8	03	0,40	10,1	1/8	0,67	17,0	0,12	3,0	0,75	19,0	
O1-0304	3/16"	4,8	03	0,52	13,3	1/4	0,95	24,0	0,12	3,0	1,02	26,0	
O1-0402	1/4"	6,4	04	0,40	10,1	1/8	0,67	17,0	0,16	4,0	0,99	25,0	
O1-04	1/4"	6,4	04	0,52	13,3	1/4	0,95	24,0	0,16	4,0	1,02	26,0	
O1-0406	1/4"	6,4	04	0,66	16,8	3/8	1,10	28,0	0,16	4,0	1,02	26,0	
O1-0504	5/16"	8,0	05	0,52	13,3	1/4	0,95	24,0	0,22	5,5	1,02	26,0	
O1-0506	5/16"	8,0	05	0,66	16,8	3/8	1,10	28,0	0,22	5,5	1,02	26,0	
O1-0604	3/8"	9,5	06	0,52	13,3	1/4	0,95	24,0	0,28	7,0	1,14	29,0	
O1-06	3/8"	9,5	06	0,66	16,8	3/8	1,10	28,0	0,28	7,0	1,02	26,0	
O1-0608	3/8"	9,5	06	0,83	21,1	1/2	1,42	36,0	0,28	7,0	1,22	31,0	
O1-0806	1/2"	12,7	08	0,66	16,8	3/8	1,10	28,0	0,39	10,0	1,06	27,0	
O1-08	1/2"	12,7	08	0,83	21,1	1/2	1,42	36,0	0,39	10,0	1,22	31,0	
O1-0812	1/2"	12,7	08	1,05	26,6	3/4	1,77	45,0	0,39	10,0	1,50	38,0	
O1-10	5/8"	16,0	10	0,91	23,1	5/8	1,58	40,0	0,47	12,0	1,50	38,0	
O1-12	3/4"	19,0	12	1,05	26,6	3/4	1,77	45,0	0,59	15,0	1,50	38,0	
O1-1216	3/4"	19,0	12	1,32	33,5	1	2,29	58,0	0,59	15,0	1,97	50,0	
O1-16	1"	25,4	16	1,32	33,5	1	2,29	58,0	0,79	20,0	2,01	51,0	

BF1

BSP BOLT

BULLONE FORATO BSP



Part nr./ Codice	T	L		L1		E		Press. Max		
		[in]	[mm]	[in]	[mm]	[in]	[mm]	[psi]	[bar]	
BF1-02	1/8-28	0,95	24,0	0,77	19,5	0,55	14,0	4351	300	
BF1-04	1/4-19	1,36	34,5	1,12	28,5	0,75	19,0	4351	300	
BF1-06	3/8-19	1,60	40,5	1,30	33,0	0,87	22,0	4351	300	
BF1-08	1/2-14	1,81	46,0	1,50	38,0	1,06	27,0	3626	250	
BF1-10	5/8-14	1,97	50,0	1,65	42,0	1,18	30,0	2901	200	
BF1-12	3/4-14	2,21	56,0	1,85	47,0	1,26	32,0	2901	200	
BF1-16	1-11	2,72	69,0	2,29	58,0	1,62	41,0	2175	150	