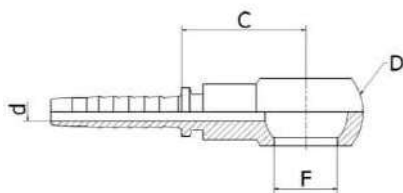


O2

METRIC BANJO

OCCHIO A PRESSARE METRICO

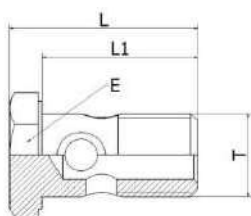


Part nr./ Codice	hose ID		size	F	d		D		cut-off C	
	[in]	[mm]			[in]	[mm]	[in]	[mm]	[in]	[mm]
O2-0308	3/16"	4,8	03	M8	0,12	3,0	0,55	14,0	0,83	21,0
O2-0310	3/16"	4,8	03	M10	0,12	3,0	0,67	17,0	0,75	19,0
O2-0410	1/4"	6,4	04	M10	0,16	4,0	0,67	17,0	0,99	25,0
O2-0412	1/4"	6,4	04	M12	0,16	4,0	0,79	20,0	1,06	27,0
O2-0414	1/4"	6,4	04	M14	0,16	4,0	0,95	24,0	1,06	27,0
O2-0512	5/16"	8,0	05	M12	0,22	5,5	0,79	20,0	0,87	22,0
O2-0514	5/16"	8,0	05	M14	0,22	5,5	0,95	24,0	1,10	28,0
O2-0516	5/16"	8,0	05	M16	0,22	5,5	1,10	28,0	1,02	26,0
O2-0518	5/16"	8,0	05	M18	0,22	5,5	1,26	32,0	1,14	29,0
O2-0614	3/8"	9,5	06	M14	0,28	7,0	0,95	24,0	0,99	25,0
O2-0616	3/8"	9,5	06	M16	0,28	7,0	1,10	28,0	1,02	26,0
O2-0618	3/8"	9,5	06	M18	0,28	7,0	1,26	32,0	1,14	29,0
O2-0818	1/2"	12,7	08	M18	0,37	9,5	1,26	32,0	1,14	29,0
O2-0822	1/2"	12,7	08	M22	0,37	9,5	1,42	36,0	1,22	31,0
O2-1022	5/8"	16,0	10	M22	0,47	12,0	1,42	36,0	1,22	31,0
O2-1226	3/4"	19,0	12	M26	0,59	15,0	1,81	46,0	1,50	38,0
O2-1630	1"	25,4	16	M30	0,79	20,0	2,13	54,0	1,69	43,0

BF4

METRIC BOLT

BULLONE FORATO METRICO



Part nr./ Codice	T	L		L1		E		Press. Max	
		[in]	[mm]	[in]	[mm]	[in]	[mm]	[psi]	[bar]
BF4-10	M10-1	0,95	24,0	0,77	19,5	0,55	14,0	4351	300
BF4-12	M12-1,5	1,24	31,5	1,00	25,5	0,67	17,0	4351	300
BF4-14	M14-1,5	1,34	34,0	1,12	28,5	0,75	19,0	4351	300
BF4-16	M16-1,5	1,62	41,0	1,30	33,0	0,87	22,0	4351	300
BF4-18	M18-1,5	1,75	44,5	1,44	36,5	0,95	24,0	3626	250
BF4-22	M22-1,5	1,83	46,5	1,36	34,5	1,06	27,0	2901	200
BF4-26	M26-1,5	2,21	56,0	1,79	45,5	1,26	32,0	2901	200
BF4-30	M30-1,5	2,60	66,0	2,17	55,0	1,42	36,0	2175	150

