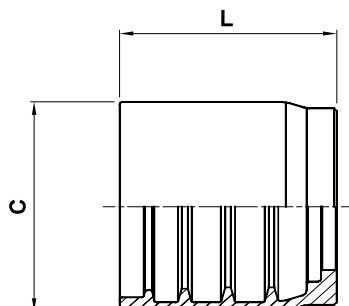




TWO PIECE SWAGED FITTINGS UNIVERSAL SERIES FOR WIRE BRAIDED AND 4 SPIRAL HYDRAULIC HOSES
RACCORDI A PRESSARE - SERIE UNIVERSALE PER TUBI TRECCIATI E 4 SPIRALI
PRESSARMATUREN UNIVERSALSERIE FÜR GEFLECHT - UND SPIRALSCHLÄUCHE
RACORES A PRENSAR SERIE UNIVERSAL PARA MANGUERA DE UNA O DOS MALLAS Y 4 ESPIRALES

FERRULE S312T



NO-SKIVE FERRULE

BOCCOLA NO-SKIVE

PRESSFASSUNG ZUM NICHTSCHÄLEN

CASQUILLO SIN PELAR

CODE CODICE BEST.-NR CODIGO	Ø HOSE Ø TUBO Ø SCHLAUCH Ø MANGUERA			C		L	
	DN	INCH	SIZE	[mm]	[in]	[mm]	[in]
S312T-06	10	3/8"	06	29,0	1,14	30,0	1,18
S312T-08	12	1/2"	08	33,0	1,30	33,5	1,32
S312T-10	16	5/8"	10	37,0	1,46	35,5	1,40
S312T-12	19	3/4"	12	42,0	1,65	40,0	1,57
S312T-16	25	1"	16	50,0	1,97	55,0	2,16
S312T-20	31	1.1/4"	20	61,0	2,40	61,0	2,40
S312T-24	38	1.1/2"	24	70,0	2,75	71,0	2,79
S312T-32	51	2"	32	85,0	3,35	88,0	3,46

NO-SKIVE FERRULE FOR: EN 856 4SP, SAE 100 R12, EN 856 4SH, SAE 100 R15
INTERTRACO HOSE TYPE: FLEXIT 3T, SHP, H4, 4ST, 4ST+

BOCCOLA NO-SKIVE PER TUBI: EN 856 4SP, SAE 100 R12, EN 856 4SH, SAE 100 R15
TUBI INTERTRACO: FLEXIT 3T, SHP, H4, 4ST, 4ST+

PRESSFASSUNG ZUM NICHTSCHÄLEN FÜR SCHLAUCH: EN 856 4SP, SAE 100 R12, EN 856 4SH, SAE 100 R15
INTERTRACO-SCHLÄUCHE TYP: FLEXIT 3T, SHP, H4, 4ST, 4ST+

CASQUILLO SIN PELAR PARA: EN 856 4SP, SAE 100 R12, EN 856 4SH, SAE 100 R15
MANGUERA INTERTRACO TIPO: FLEXIT 3T, SHP, H4, 4ST, 4ST+