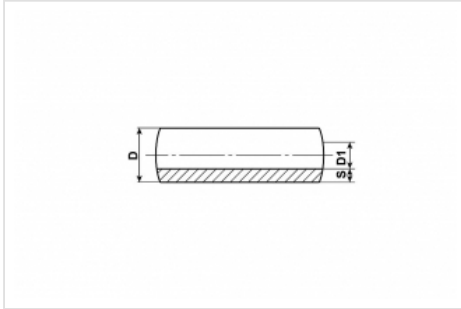




## Plastic tubes semi-rigid - flexible PA 12 HL, PA 12 PHL, PA 12 HIPHL



### Plastic tubes / nylon tubings semi rigid PA 12 HL

DIN 73378

Operative pressure for Ø 4 x 0,85 and 23°C: approx. 1044 PSI / 7 MPA / 72 bar

Operative pressure for Ø 6 x 1,25 and 23°C: approx. 1015 PSI / 7 MPA / 70 bar

Operative pressure for Ø 6 x 1,5 and 23°C: approx. 1291 PSI / 9 MPA / 89 bar

Item No.	Color	Material	Dimension	Grease	D	D1	S	m / coil	Box	Palett
100-010	black	PA 12 HL	4 x 0,85	unfilled	4	2,3	0,85	50	1500	5000
100-010-T	transparent	PA 12 HL	4 x 0,85	unfilled	4	2,3	0,85	50	1500	5000
4511-100	black	PA 12 HL	4 x 0,85	NLGI class 000	4	2,3	0,85	50	1500	5000
100-009-25	black	PA 12 HL	6 x 1,5	NLGI class 2	6	3,0	1,5	25	750	4000
100-004	black	PA 12 HL	6 x 1,5	NLGI class 000	6	3,0	1,5	100	500	4000
100-003-25	black	PA 12 HL	6 x 1,5	unfilled	6	3,0	1,5	25	750	4000
100-003	black	PA 12 HL	6 x 1,5	unfilled	6	3,0	1,5	100	500	4000
4510-001	transparent	PA 12 HL	6 x 1,25	unfilled	6	3,5	1,25	100	500	4000

## Plastic tubes / nylon tubings flexible PA 12 PHL, PA 12 HIPHL

### DIN 73378

#### Operating pressure:

100-005 / 100-006 approx. 39 bar / 570 PSI / 4 MPA

100-006-T approx. 36 bar / 522 PSI / 3,6 MPA

100-007 approx. 44 bar / 640 PSI / 4,4 MPA

Item No.	Color	Material	Dimension	Grease	D	D1	S	m / coil	Box	Palett
100-005	black	PA 12 HIPHL	4 x 0,85	NLGI class 000	4	2,3	0,85	50	1500	5000
100-006	black	PA 12 HIPHL	4 x 0,85	unfilled	4	2,3	0,85	50	1500	5000
100-006-T	transparent	PA 12 PHL	4 x 0,85	unfilled	4	2,3	0,85	50	1500	5000
100-007	black	PA 12 PHL	6 x 1,5	unfilled	6	3,0	1,5	100	500	4000

Our plastic tubes / tube lines are used in lubrication systems to connect the progressive distribution unit with the lubrication point or the relubrication distributor (or piston distributor) to the lubrication point.

#### Mounting advise:

Please do always use reinforcing sockets for plastic tubes with diameter 4x 0,85 and 6x1,25

#### Technical informations:

##### Material:

Plastic tube, semi-flexible: PA 12 HL

Plastic tube, flexible: PA 12 PHL, PA 12 HIPHL

**Standard:** DIN 73378

##### Material properties:

All types of plastic tubes (PA 12 HL, PA 12 PHL and PA 12 HIPHL) are free of plasticisers, and resistant to light or heat-induced ageing.

##### Permissible media:

Excellent resistance to oil, grease and lubricants, and to all types of fuels and chlorine-free cleaning agents and solvents.

Application for other media than those stated above, only upon request!

**Permissible operating temperature:** ca. – 60 °C to + 80 °C

**The permissible operating pressures according to DIN 73378 are calculated by means of the following formula**

$$P = 20 \cdot \sigma V \cdot$$

s (Nenn)

-----

-----

**s** = nominal wall thickness [mm];  
**dm** = da – s;  
 **$\sigma_V$**  = reference stress N/mm<sup>2</sup> at 23 °C

#### Important advice for assembly!

Our PA12HL plastic tubes according to DIN 73378 in the dimension 6x1.5 (i.e. 6 mm outer diameter and 1.5 mm wall thickness = 3 mm inner diameter) are also referred to as poly tube 6x3. For these tubes, use of a push-in socket is **not** required. Assembly together with a cutting ring fitting, equal to use of our push-in fitting, is easy and straight forward.

In contrast to that, push-in sockets or reinforcement sockets must be used for PA 12 PHL and PA 12 HIPHL polyamide tubes with wall thickness of 0.85 mm.

Please note that push-in sockets that are "lost" or "forgotten" during assembly, may result in severe problems and major damage.

As a general rule, we recommend using push-in sockets if the wall thickness of a plastic tube is  $\leq$  1.25 mm.

In our capacity as manufacturer, we would like to make our customers aware that assembly of our components for central lubrication (tubes, hoses, screw fittings, ...) must only be performed by appropriately trained and qualified personnel.

In borderline cases, it is advisable to consult us beforehand. Have the tubes mounted only by qualified and/or accordingly trained personnel.

**The warranty claims are limited to the specification of this technical data sheet. Further warranties will not be accepted.**

<b>Download</b>	
<b><u>PDF - download</u></b>	technical data sheet plastic tube 100-003 / 100-003-25 unfilled
<b><u>PDF - download</u></b>	Product - information grease NLGI 000
<b><u>PDF - download</u></b>	Product - information grease NLGI 2
<b><u>PDF - download</u></b>	Safety data sheet for grease NLGI 000
<b><u>PDF - download</u></b>	Safety data sheet for grease NLGI 2

Fritsche GmbH & Co. KG • Eichenhöhe 10 • 21255 Kakenstorf  
 Telefon: +49 (0) 4186-88829-0 • Telefax: +49 (0) 4186-88829-99  
 E-Mail: [info@fritsche-gmbh.de](mailto:info@fritsche-gmbh.de)