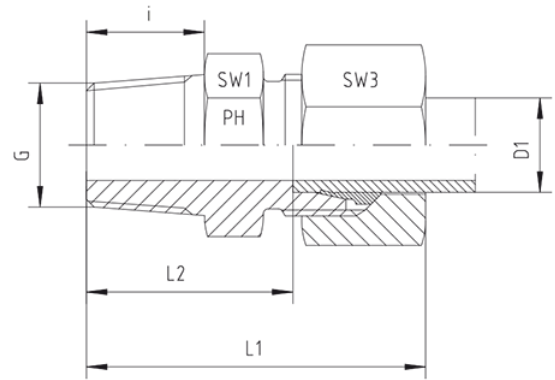
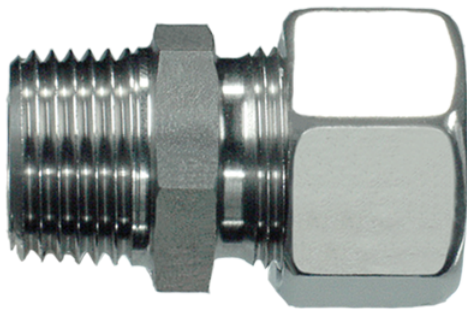


Rubrik 8.84

BSP - Taper - Standard



Male Stud Couplings

LL- and L-Series

Thread: BSP - Taper

Other jump sizes on request!

Pressure	Tube O.D.	Thread	Approx. Dimensions					Order-Code
PN	D1	G	L1	L2	i	SW1	SW3	

Series LL

100	4	R 1/8" keg	26	16,0	8	11	10	GE-LL-04-R 1/8"-k
100	6	R 1/8" keg	26	14,5	8	11	12	GE-LL-06-R 1/8"-k
100	6	R 1/4" keg	31	18,5	12	14	12	GE-LL-06-R 1/4"-k
100	8	R 1/8" keg	28	16,5	8	12	14	GE-LL-08-R 1/8"-k
100	8	R 1/4" keg	32	20,5	12	14	12	GE-LL-08-R 1/4"-k

Series L

315	6	R 1/8" keg	30	15,0	8	12	14	GE-L-06-R 1/8"-k
315	6	R 1/4" keg	35	20,0	12	17	14	GE-L-06-R 1/4"-k
315	6	R 3/8" keg	36	21,0	12	17	14	GE-L-06-R 3/8"-k
315	6	R 1/2" keg	40	23,0	14	22	14	GE-L-06-R 1/2"-k
315	8	R 1/8" keg	31	16,0	8	14	17	GE-L-08-R 1/8"-k
315	8	R 1/4" keg	35	20,0	12	17	17	GE-L-08-R 1/4"-k
315	8	R 3/8" keg	35	20,0	12	17	17	GE-L-08-R 3/8"-k
315	8	R 1/2" keg	38	22,0	14	22	17	GE-L-08-R 1/2"-k
315	10	R 1/8" keg	32	17,0	8	17	19	GE-L-10-R 1/8"-k

315	10	R 1/4" keg	36	21,0	12	17	19	GE-L-10-R 1/4"-k
315	10	R 3/8" keg	36	21,0	12	17	19	GE-L-10-R 3/8"-k
315	10	R 1/2" keg	39	24,0	14	22	19	GE-L-10-R 1/2"-k
315	12	R 1/8" keg	36	18	8	19	22	GE-L-12-R 1/8"-k
315	12	R 1/4" keg	37	22,0	12	19	22	GE-L-12-R 1/4"-k
315	12	R 3/8" keg	37	22,0	12	19	22	GE-L-12-R 3/8"-k
315	12	R 1/2" keg	39	24,0	14	22	22	GE-L-12-R 1/2"-k
160	12	R 3/4" keg	43	27,0	16	27	22	GE-L-12-R 3/4"-k
315	15	R 1/4" keg	42	26	12	24	27	GE-L-15-R 1/4"-k
315	15	R 3/8" keg	42	23,0	12	24	27	GE-L-15-R 3/8"-k
315	15	R 1/2" keg	42	25,0	14	24	27	GE-L-15-R 1/2"-k
160	15	R 3/4" keg	45	28,0	16	27	27	GE-L-15-R 3/4"-k
315	18	R 3/8" keg	42	23,5	12	27	32	GE-L-18-R 3/8"-k
315	18	R 1/2" keg	42	25,5	14	27	32	GE-L-18-R 1/2"-k
160	18	R 3/4" keg	47	27,5	16	27	32	GE-L-18-R 3/4"-k
160	22	R 3/8" keg	46	25,5	12	32	36	GE-L-22-R 3/8"-k
160	22	R 1/2" keg	46	25,5	14	32	36	GE-L-22-R 1/2"-k
160	22	R 3/4" keg	46	29,5	16	32	36	GE-L-22-R 3/4"-k
160	22	R 1" keg	50	31,5	18	36	36	GE-L-22-R 1"-k
160	28	R 1/2" keg	49	28,5	14	41	41	GE-L-28-R 1/2"-k
160	28	R 3/4" keg	49	30,5	16	41	41	GE-L-28-R 3/4"-k
160	28	R 1" keg	49	32,5	18	41	41	GE-L-28-R 1"-k
160	28	R 1 1/4" keg	49	30,5	20	46	41	GE-L-28-R 1 1/4"-k
160	35	R 1" keg	51	27,5	18	46	50	GE-L-35-R 1"-k
160	35	R 1 1/4" keg	56	34,5	20	46	50	GE-L-35-R 1 1/4"-k
160	35	R 1 1/2" keg	63	37,5	22	50	50	GE-L-35-R 1 1/2"-k
160	42	R 1 1/4" keg	55	31,0	20	55	60	GE-L-42-R 1 1/4"-k
160	42	R 1 1/2" keg	61	38,0	22	55	60	GE-L-42-R 1 1/2"-k