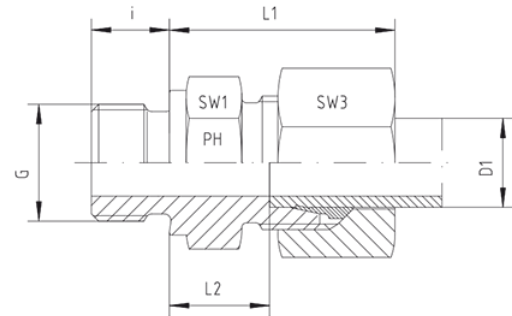
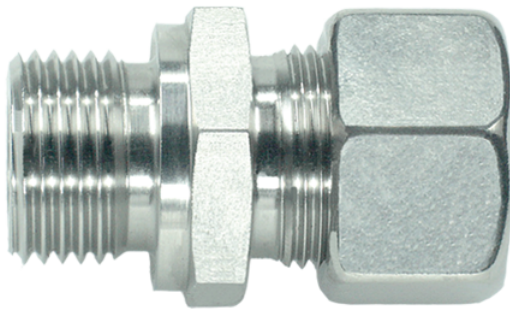


## Rubrik 8.49

### BSP - Parallel - B - Standard



Male Stud Couplings

LL- and L-Series

Thread: BSP - Parallel

Sealing by Sealing Shoulder Form B

Pressure	Tube O.D.	Thread	Approx. Dimensions					Order-Code
PN	D1	G	L1	L2	i	SW1	SW3	
<b>Series L</b>								
315	6	G 1/8"	23,0	8,5	8	14	14	GE-LR-06-G 1/8"
315	6	G 1/4"	27,0	9,0	12	19	14	GE-LR-06-G 1/4"
315	6	G 3/8"	27,0	11,5	12	22	14	GE-LR-06-G 3/8"
315	6	G 1/2"	29,0	12,0	14	27	14	GE-LR-06-G 1/2"
315	8	G 1/8"	26,0	9,5	8	14	17	GE-LR-08-G 1/8"
315	8	G 1/4"	25,0	10,0	12	19	17	GE-LR-08-G 1/4"
315	8	G 3/8"	28,5	11,5	12	22	17	GE-LR-08-G 3/8"
315	8	G 1/2"	28,5	13,0	14	27	17	GE-LR-08-G 1/2"
315	10	G 1/8"	27,5	11,0	8	17	19	GE-LR-10-G 1/8"
315	10	G 1/4"	26,0	11,0	12	19	19	GE-LR-10-G 1/4"
315	10	G 3/8"	30,5	12,5	12	22	19	GE-LR-10-G 3/8"
315	10	G 1/2"	32,5	13,0	14	27	19	GE-LR-10-G 1/2"
315	10	G 3/4"	30,5	14,0	16	32	19	GE-LR-10-G 3/4"
315	12	G 1/8"	29,0	11,0	8	19	22	GE-LR-12-G 1/8"
315	12	G 1/4"	30,0	12,0	12	19	22	GE-LR-12-G 1/4"
315	12	G 3/8"	27,0	12,5	12	22	22	GE-LR-12-G 3/8"

315	12	G 1/2"	31,0	13,0	14	27	22	GE-LR-12-G 1/2"
315	12	G 3/4"	31,0	14,0	16	32	22	GE-LR-12-G 3/4"
315	15	G 1/4"	32,0	13,0	12	24	27	GE-LR-15-G 1/4"
315	15	G 3/8"	31,0	13,5	12	24	27	GE-LR-15-G 3/8"
315	15	G 1/2"	29,0	14,0	14	27	27	GE-LR-15-G 1/2"
315	15	G 3/4"	32,5	15,0	16	32	27	GE-LR-15-G 3/4"
315	15	G 1"	33,0	16,0	18	41	27	GE-LR-15-G 1"
315	18	G 3/8"	31,0	12,5	12	27	32	GE-LR-18-G 3/8"
315	18	G 1/2"	31,0	14,5	14	27	32	GE-LR-18-G 1/2"
315	18	G 3/4"	34,0	14,5	16	32	32	GE-LR-18-G 3/4"
315	18	G 1"	35,5	16,5	18	41	32	GE-LR-18-G 1"
160	22	G 3/8"	49,0	16,0	12	32	36	GE-LR-22-G 3/8"
160	22	G 1/2"	37,0	16,5	14	32	36	GE-LR-22-G 1/2"
160	22	G 3/4"	33,0	16,5	16	32	36	GE-LR-22-G 3/4"
160	22	G 1"	38,0	17,5	18	41	36	GE-LR-22-G 1"
160	22	G 1 1/4"	38,0	18,5	20	50	36	GE-LR-22-G 1 1/4"
160	28	G 1/2"	39,0	17,5	14	41	41	GE-LR-28-G 1/2"
160	28	G 3/4"	38,0	17,5	16	41	41	GE-LR-28-G 3/4"
160	28	G 1"	39,0	17,5	18	41	41	GE-LR-28-G 1"
160	28	G 1 1/4"	40,0	18,5	20	50	41	GE-LR-28-G 1 1/4"
160	28	G 1 1/2"	43,0	20,5	22	55	41	GE-LR-28-G 1 1/2"
160	35	G 3/4"	42,0	18,5	16	46	50	GE-LR-35-G 3/4"
160	35	G 1"	42,0	17,5	18	46	50	GE-LR-35-G 1"
160	35	G 1 1/4"	39,0	17,5	20	50	50	GE-LR-35-G 1 1/4"
160	35	G 1 1/2"	44,0	19,5	22	55	50	GE-LR-35-G 1 1/2"
160	42	G 1"	47,0	19,0	18	55	60	GE-LR-42-G 1"
160	42	G 1 1/4"	47,0	19,0	20	55	60	GE-LR-42-G 1 1/4"
160	42	G 1 1/2"	47,0	19,0	22	55	60	GE-LR-42-G 1 1/2"
160	42	G 2"	48,0	21,0	23	70	60	GE-LR-42-G 2"