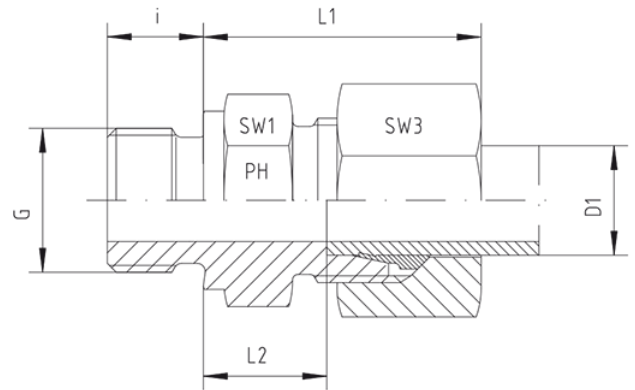
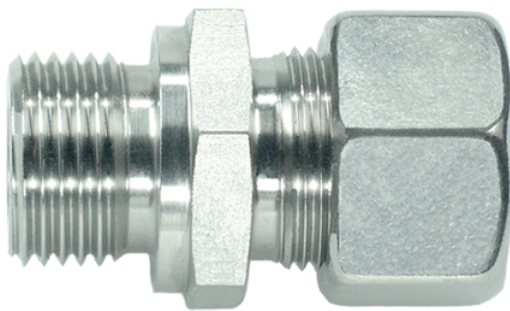


Rubrik 8.58

BSP - Parallel - B - Standard



Male Stud Couplings

S-Series

Thread: BSP - Parallel

Sealing by Sealing Shoulder Form B

Pressure	Tube O.D.	Thread	Approx. Dimensions					Order-Code
PN	D1	G	L1	L2	i	SW1	SW3	
Series S								
630	6	G 1/8"	28,0	13,0	8	14	17	GE-SR-06-G 1/8"
630	6	G 1/4"	28,0	13,0	12	19	17	GE-SR-06-G 1/4"
630	6	G 3/8"	30,0	15,5	12	22	19	GE-SR-06-G 3/8"
630	6	G 1/2"	34,0	17,0	14	27	19	GE-SR-06-G 1/2"
630	8	G 1/8"	30,0	14,0	8	17	19	GE-SR-08-G 1/8"
630	8	G 1/4"	30,0	15,0	12	19	19	GE-SR-08-G 1/4"
630	8	G 3/8"	31,5	15,5	12	22	19	GE-SR-08-G 3/8"
630	8	G 1/2"	31,5	15,0	14	27	19	GE-SR-08-G 1/2"
630	10	G 1/8"	31,0	13,5	8	19	22	GE-SR-10-G 1/8"
630	10	G 1/4"	32,0	14,5	12	19	22	GE-SR-10-G 1/4"
630	10	G 3/8"	33,0	15,0	12	22	22	GE-SR-10-G 3/8"
630	10	G 1/2"	32,0	13,5	14	27	22	GE-SR-10-G 1/2"
630	10	G 3/4"	35,0	17,5	16	32	22	GE-SR-10-G 3/4"
630	12	G 1/4"	34,5	16,5	12	22	24	GE-SR-12-G 1/4"
630	12	G 3/8"	33,0	17,0	12	22	24	GE-SR-12-G 3/8"
630	12	G 1/2"	34,0	17,5	14	27	24	GE-SR-12-G 1/2"

630	12	G 3/4"	36,0	17,5	16	32	24	GE-SR-12-G 3/4"
630	14	G 1/4"	37,0	17,0	12	24	27	GE-SR-14-G 1/4"
630	14	G 3/8"	37,0	17,0	12	24	27	GE-SR-14-G 3/8"
630	14	G 1/2"	37,0	19,0	14	27	27	GE-SR-14-G 1/2"
400	14	G 3/4"	38,0	19,0	16	32	27	GE-SR-14-G 3/4"
400	16	G 1/4"	38,0	17,5	12	27	30	GE-SR-16-G 1/4"
400	16	G 3/8"	38,0	18,0	12	27	30	GE-SR-16-G 3/8"
400	16	G 1/2"	37,0	18,5	14	27	30	GE-SR-16-G 1/2"
400	16	G 3/4"	39,0	20,5	16	32	30	GE-SR-16-G 3/4"
400	16	G 1"	43,5	22,5	18	41	30	GE-SR-16-G 1"
400	20	G 3/8"	42,0	18,0	12	32	36	GE-SR-20-G 3/8"
400	20	G 1/2"	44,5	20,5	14	32	36	GE-SR-20-G 1/2"
400	20	G 3/4"	44,5	20,5	16	32	36	GE-SR-20-G 3/4"
400	20	G 1"	47,0	22,5	18	41	36	GE-SR-20-G 1"
400	20	G 1 1/4"	47,0	22,5	20	50	36	GE-SR-20-G 1 1/4"
400	25	G 1/2"	50,5	23,0	14	41	46	GE-SR-25-G 1/2"
400	25	G 3/4"	50,0	23,0	16	41	46	GE-SR-25-G 3/4"
400	25	G 1"	50,0	23,0	18	41	46	GE-SR-25-G 1"
250	25	G 1 1/4"	50,0	23,0	20	50	46	GE-SR-25-G 1 1/4"
250	30	G 3/4"	54,0	25,5	16	46	50	GE-SR-30-G 3/4"
250	30	G 1"	52,0	23,5	18	46	50	GE-SR-30-G 1"
250	30	G 1 1/4"	52,0	23,5	20	50	50	GE-SR-30-G 1 1/4"
250	30	G 1 1/2"	52,0	23,5	22	55	50	GE-SR-30-G 1 1/2"
250	38	G 1"	57,0	26,0	18	55	60	GE-SR-38-G 1"
250	38	G 1 1/4"	59,5	23,0	20	55	60	GE-SR-38-G 1 1/4"
250	38	G 1 1/2"	59,5	26,0	22	55	60	GE-SR-38-G 1 1/2"
250	38	G 2"	60,0	26,5	23	70	60	GE-SR-38-G 2"