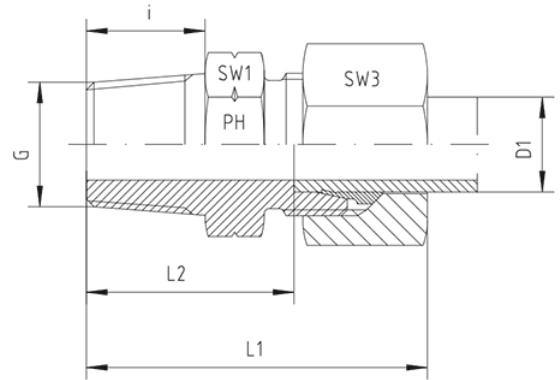
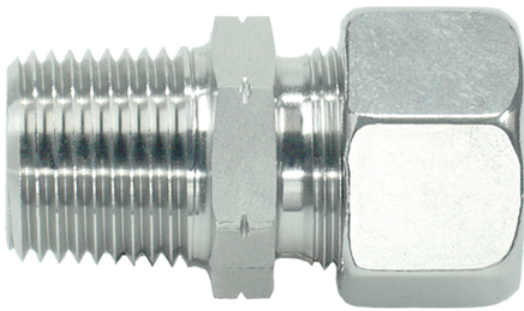


Rubrik 8.81

NPT - Standard



Male Stud Couplings
 S-Series
 Thread: NPT
 Other jump sizes on request!

Pressure	Tube O.D.	Thread	Approx. Dimensions					Order-Code	
			L1	L2	i	SW1	SW3		
PN	D1	G	L1	L2	i	SW1	SW3		
Series S									
630	6	1/8" NPT	36,0	21,0	10,0	14	17	GE-S-06-1/8"-NPT	
630	6	1/4" NPT	43,0	28,0	15,0	17	17	GE-S-06-1/4"-NPT	
630	6	3/8" NPT	41,0	26,0	15,3	19	17	GE-S-06-3/8"-NPT	
630	6	1/2" NPT	50,0	35,0	20,0	22	17	GE-S-06-1/2"-NPT	
630	8	1/8" NPT	40,0	23,0	10,0	17	19	GE-S-08-1/8"-NPT	
630	8	1/4" NPT	43,0	28,0	15,0	17	19	GE-S-08-1/4"-NPT	
630	8	3/8" NPT	43,0	28,0	15,3	19	19	GE-S-08-3/8"-NPT	
630	8	1/2" NPT	50,0	35,0	20,0	22	19	GE-S-08-1/2"-NPT	
630	10	1/8" NPT	40,0	22,5	10,0	19	22	GE-S-10-1/8"-NPT	
630	10	1/4" NPT	44,0	27,5	15,0	19	22	GE-S-10-1/4"-NPT	
630	10	3/8" NPT	44,0	27,5	15,3	19	22	GE-S-10-3/8"-NPT	
630	10	1/2" NPT	51,0	34,5	20,0	22	22	GE-S-10-1/2"-NPT	
400	10	3/4" NPT	50,5	31,5	20,0	27	22	GE-S-10-3/4"-NPT	
630	12	1/4" NPT	46,0	29,5	15,0	22	24	GE-S-12-1/4"-NPT	
630	12	3/8" NPT	46,0	29,5	15,3	22	24	GE-S-12-3/8"-NPT	
630	12	1/2" NPT	51,0	34,5	20,0	22	24	GE-S-12-1/2"-NPT	

400	12	3/4" NPT	53,0	36,5	20,0	27	24	GE-S-12-3/4"-NPT
630	14	3/8" NPT	49,0	30,0	15,3	24	27	GE-S-14-3/8"-NPT
630	14	1/2" NPT	54,0	36,0	20,0	24	27	GE-S-14-1/2"-NPT
400	14	3/4" NPT	56,0	38,0	20,0	27	27	GE-S-14-3/4"-NPT
400	16	3/8" NPT	49,0	30,5	15,3	27	30	GE-S-16-3/8"-NPT
400	16	1/2" NPT	54,0	35,5	20,0	27	30	GE-S-16-1/2"-NPT
400	16	3/4" NPT	56,0	37,5	20,0	30	30	GE-S-16-3/4"-NPT
400	16	1" NPT	63,0	44,5	25,0	36	30	GE-S-16-1"-NPT
400	20	3/8" NPT	59,0	32,5	15,3	32	36	GE-S-20-3/8"-NPT
400	20	1/2" NPT	59,0	37,5	20,0	32	36	GE-S-20-1/2"-NPT
400	20	3/4" NPT	59,0	37,5	20,0	32	36	GE-S-20-3/4"-NPT
400	20	1" NPT	66,0	44,5	25,0	36	36	GE-S-20-1"-NPT
400	20	1 1/4" NPT	67,5	44,5	25,5	46	36	GE-S-20-1 1/4"-NPT
400	25	1/2" NPT	67,5	40,0	20,0	41	46	GE-S-25-1/2"-NPT
400	25	3/4" NPT	64,0	40,0	20,0	41	46	GE-S-25-3/4"-NPT
400	25	1" NPT	69,0	45,0	25,0	41	46	GE-S-25-1"-NPT
400	25	1 1/4" NPT	70,0	46,0	25,5	46	46	GE-S-25-1 1/4"-NPT
400	30	3/4" NPT	67,0	40,5	20,0	46	50	GE-S-30-3/4"-NPT
400	30	1" NPT	72,0	45,5	25,0	46	50	GE-S-30-1"-NPT
400	30	1 1/4" NPT	73,0	46,5	25,5	46	50	GE-S-30-1 1/4"-NPT
315	30	1 1/2" NPT	73,0	46,5	26,0	55	50	GE-S-30-1 1/2"-NPT
315	38	1" NPT	79,0	48,0	25,0	55	60	GE-S-38-1"-NPT
315	38	1 1/4" NPT	80,0	49,0	25,5	55	60	GE-S-38-1 1/4"-NPT
315	38	1 1/2" NPT	80,0	49,0	26,0	55	60	GE-S-38-1 1/2"-NPT