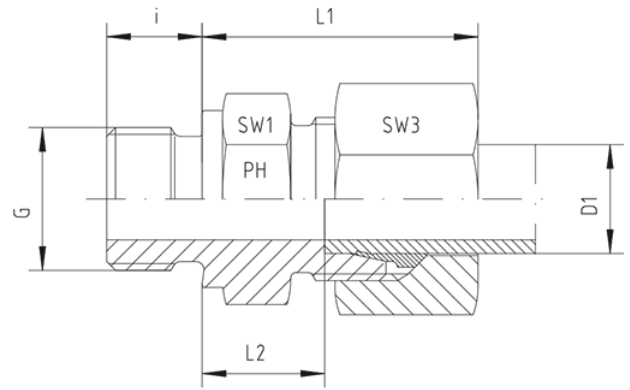
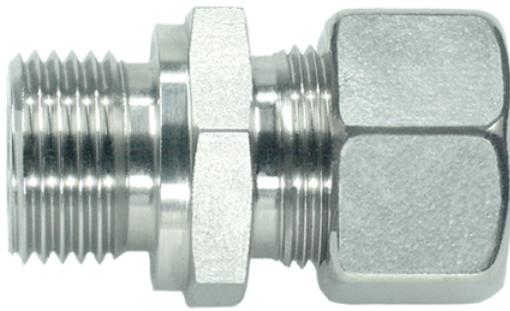


Rubrik 8.70

Metric - Parallel - B - Standard



Male Stud Couplings S-Series Thread: Metric - Parallel Sealing by Sealing Shoulder Form B

Pressure	Tube O.D.	Thread	Approx. Dimensions					Order-Code
PN	D1	G	L1	L2	i	SW1	SW3	

Series S

630	6	M 12 x 1,5	28,0	13,0	12	17	17	GE-S-06-M 12x1,5
630	6	M 14 x 1,5	30,0	13,0	12	19	17	GE-S-06-M 14x1,5
630	8	M 12 x 1,5	32,0	15,0	12	17	19	GE-S-08-M 12x1,5
630	8	M 14 x 1,5	30,0	15,0	12	19	19	GE-S-08-M 14x1,5
630	8	M 16 x 1,5	33,0	15,5	12	22	19	GE-S-08-M 16x1,5
630	10	M 14 x 1,5	32,0	14,5	12	19	22	GE-S-10-M 14x1,5
630	10	M 16 x 1,5	31,0	15,0	12	22	22	GE-S-10-M 16x1,5
630	10	M 18 x 1,5	31,0	15,0	12	24	22	GE-S-10-M 18x1,5
630	12	M 12 x 1,5	33,5	16,5	12	22	24	GE-S-12-M 12x1,5
630	12	M 14 x 1,5	33,0	16,0	12	22	24	GE-S-12-M 14x1,5
630	12	M 16 x 1,5	35,5	17,0	12	22	24	GE-S-12-M 16x1,5
630	12	M 18 x 1,5	33,0	17,0	12	24	24	GE-S-12-M 18x1,5
630	12	M 20 x 1,5	36,0	17,5	14	27	24	GE-S-12-M 20x1,5
400	12	M 22 x 1,5	36,5	17,5	14	27	24	GE-S-12-M 22x1,5
630	14	M 20 x 1,5	37,0	19,0	14	27	27	GE-S-14-M 20x1,5
400	14	M 22 x 1,5	39,0	18,5	14	27	27	GE-S-14-M 22x1,5
400	16	M 18 x 1,5	40,0	18,0	12	27	30	GE-S-16-M 18x1,5
400	16	M 22 x 1,5	37,0	18,5	14	27	30	GE-S-16-M 22x1,5

400	20	M 27 x 2	42,5	20,5	16	32	36	GE-S-20-M 27x2
400	25	M 33 x 2	47,0	23,0	18	41	46	GE-S-25-M 33x2
250	30	M 42 x 2	50,0	23,5	20	50	50	GE-S-30-M 42x2
250	38	M 48 x 2	57,0	26,0	22	55	60	GE-S-38-M 48x2