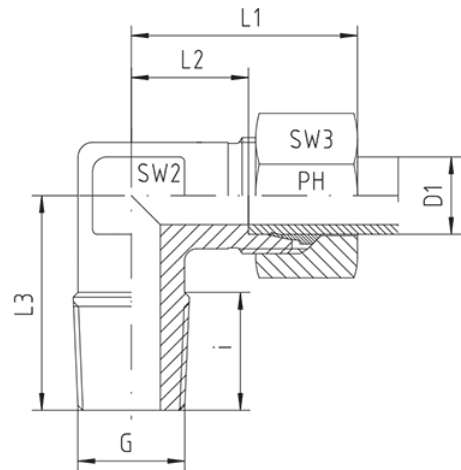
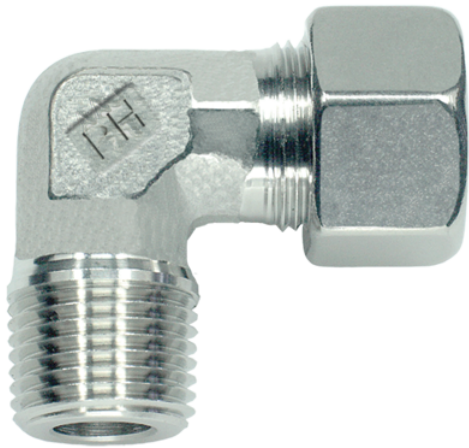


Rubrik 8.99

BSP - Taper - Standard



Stud Elbows LL- and L-Series Thread: BSP - Taper

Pressure	Tube O.D.	Thread	Approx. Dimensions						Order-Code
PN	D1	G	L1	L2	L3	i	SW2	SW3	

Series LL

100	4	R 1/8" keg	21,0	11,0	17,0	8	9	10	WE-LL-04-R 1/8"-k
100	6	R 1/8" keg	21,0	9,5	17,0	8	9	12	WE-LL-06-R 1/8"-k
100	8	R 1/8" keg	23,0	11,5	20,0	8	12	14	WE-LL-08-R 1/8"-k

Series L

315	6	R 1/8" keg	27,0	12,0	20,0	8	12	14	WE-L-06-R 1/8"-k
315	6	R 1/4" keg	27,0	12,0	26,0	12	12	14	WE-L-06-R 1/4"-k
315	6	R 3/8" keg	30,0	15,0	27,0	12	14	14	WE-L-06-R 3/8"-k
315	6	R 1/2" keg	30,5	15,5	30,0	14	17	14	WE-L-06-R 1/2"-k
315	8	R 1/8" keg	29,0	14,0	26,0	8	12	17	WE-L-08-R 1/8"-k
315	8	R 1/4" keg	29,0	14,0	26,0	12	12	17	WE-L-08-R 1/4"-k
315	8	R 3/8" keg	32,0	15,0	28,0	12	14	17	WE-L-08-R 3/8"-k
315	8	R 1/2" keg	34,5	19,5	30,0	14	17	17	WE-L-08-R 1/2"-k
315	10	R 1/8" keg	31,5	15,0	27,0	8	14	19	WE-L-10-R 1/8"-k
315	10	R 1/4" keg	30,0	15,0	27,0	12	14	19	WE-L-10-R 1/4"-k
315	10	R 3/8" keg	30,0	15,0	28,0	12	14	19	WE-L-10-R 3/8"-k
315	10	R 1/2" keg	37,0	21,0	33,0	14	17	19	WE-L-10-R 1/2"-k
315	12	R 1/8" keg	32,0	17,5	27,0	8	17	22	WE-L-12-R 1/8"-k

315	12	R 1/4" keg	32,0	17,5	27,0	12	17	22	WE-L-12-R 1/4"-k
315	12	R 3/8" keg	32,0	17,5	28,0	12	17	22	WE-L-12-R 3/8"-k
315	12	R 1/2" keg	32,0	17,5	32,5	14	17	22	WE-L-12-R 1/2"-k
315	15	R 1/4" keg	36,0	21,0	32,0	12	19	27	WE-L-15-R 1/4"-k
315	15	R 3/8" keg	36,0	21,0	32,5	12	19	27	WE-L-15-R 3/8"-k
315	15	R 1/2" keg	36,0	21,0	34,0	14	19	27	WE-L-15-R 1/2"-k
160	15	R 3/4" keg	36,0	21,0	42,0	16	24	27	WE-L-15-R 3/4"-k
315	18	R 3/8" keg	40,0	23,5	36,5	12	24	32	WE-L-18-R 3/8"-k
315	18	R 1/2" keg	40,0	23,5	36,0	14	24	32	WE-L-18-R 1/2"-k
160	18	R 3/4" keg	38,5	22,0	41,0	16	24	32	WE-L-18-R 3/4"-k
160	22	R 1/2" keg	44,0	27,5	41,0	14	27	36	WE-L-22-R 1/2"-k
160	22	R 3/4" keg	44,0	27,5	41,0	16	27	36	WE-L-22-R 3/4"-k
160	28	R 1" keg	51,5	30,5	47,0	20	36	41	WE-L-28-R 1"-k
160	35	R 1 1/4" keg	59,5	33,0	56,0	26	41	50	WE-L-35-R 1 1/4"-k