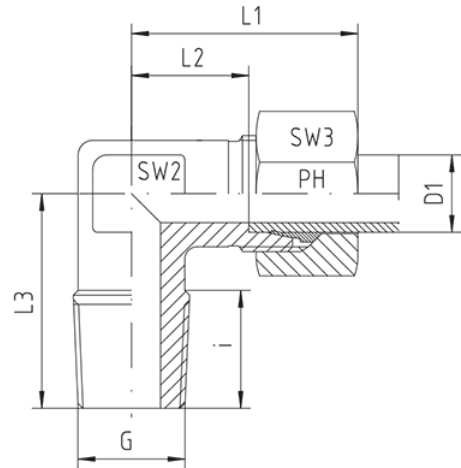
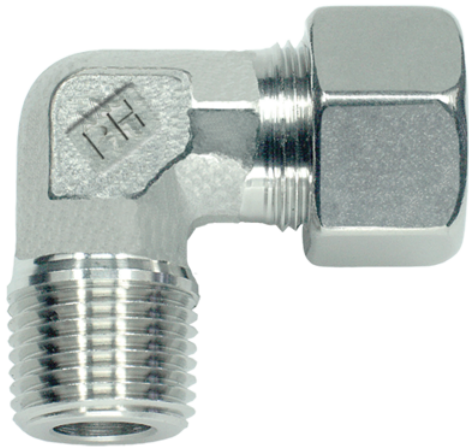


Rubrik 8.102

BSP - Taper - Standard



Stud Elbows S-Series Thread: BSP - Taper (1) The pressure rates are only valid, if the female parts are with tapered threads, too.

Pressure	Tube O.D.	Thread	Approx. Dimensions						Order-Code
(1) PN	D1	G	L1	L2	L3	i	SW2	SW3	

Series S

630	6	R 1/8" keg	29,5	15,0	25	8	12	17	WE-S-06-R 1/8"-k
630	6	R 1/4" keg	31,0	16,5	26	12	12	17	WE-S-06-R 1/4"-k
630	6	R 3/8" keg	32,0	17,5	27	12	14	17	WE-S-06-R 3/8"-k
630	6	R 1/2" keg	34,0	19,0	33	14	17	17	WE-S-06-R 1/2"-k
630	8	R 1/8" keg	32,0	17,0		8	14	19	WE-S-08-R 1/8"-k
630	8	R 1/4" keg	32,0	17,0	27	12	14	19	WE-S-08-R 1/4"-k
630	8	R 3/8" keg	33,0	18,0	28	12	14	19	WE-S-08-R 3/8"-k
630	8	R 1/2" keg	38,0	23,0	33	14	17	19	WE-S-08-R 1/2"-k
630	10	R 1/8" keg	34,0	17,5	28	8	17	22	WE-S-10-R 1/8"-k
630	10	R 1/4" keg	34,0	17,5	28	12	17	22	WE-S-10-R 1/4"-k
630	10	R 3/8" keg	34,0	17,5	28	12	17	22	WE-S-10-R 3/8"-k
630	10	R 1/2" keg	39,0	22,5	32	14	17	22	WE-S-10-R 1/2"-k
630	12	R 1/4" keg	38,0	21,5	27	12	17	24	WE-S-12-R 1/4"-k
630	12	R 3/8" keg	38,0	21,5	28	12	17	24	WE-S-12-R 3/8"-k
630	12	R 1/2" keg	39,0	22,5	32	14	17	24	WE-S-12-R 1/2"-k
630	14	R 3/8" keg	40,0	22,0	30	12	19	27	WE-S-14-R 3/8"-k
630	14	R 1/2" keg	40,0	22,0	32	14	19	27	WE-S-14-R 1/2"-k
400	16	R 3/8" keg	43,0	24,5	32	12	24	30	WE-S-16-R 3/8"-k

400	16	R 1/2" keg	43,0	24,5	32	14	24	30	WE-S-16-R 1/2"-k
160	16	R 3/4" keg	43,0	24,5	41	16	24	30	WE-S-16-R 3/4"-k
400	20	R 1/2" keg	48,0	26,5	42	19	27	36	WE-S-20-R 1/2"-k
400	20	R 3/4" keg	48,0	26,5	42	16	27	36	WE-S-20-R 3/4"-k