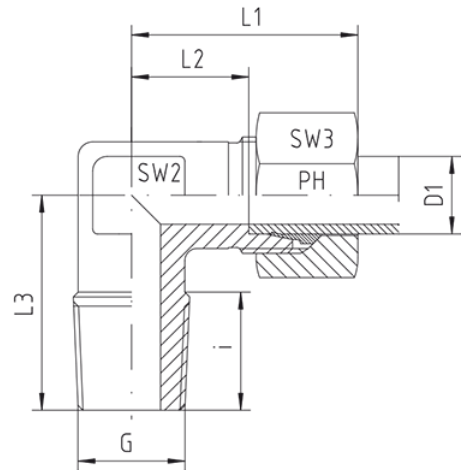
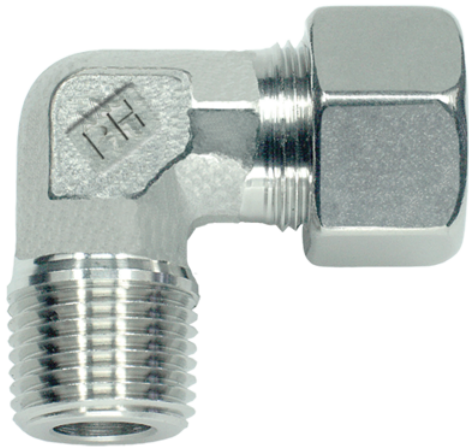


Rubrik 8.108

Metric - Taper - Standard



Stud Elbows LL-, L- and S-Series Thread: Metric - Taper ** The pressure rates are only valid, if the female parts are with tapered threads, too.

Pressure	Tube O.D.	Thread	Approx. Dimensions						Order-Code
			PN	D1	G	L1	L2	L3	

Series LL

100	4	M 6 x 1 keg	21	11,0	17	8	9	10	WE-LL-04-M 6x1-k
100	4	M 8 x 1 keg	21	11,0	17	8	9	10	WE-LL-04-M 8x1-k
100	4	M 10 x 1 keg	21	11,0	17	8	9	10	WE-LL-04-M 10x1-k
100	6	M 6 x 1 keg	23	10,0	17	8	9	12	WE-LL-06-M 6x1-k
100	6	M 8 x 1 keg	23	10,0	17	8	9	12	WE-LL-06-M 8x1-k
100	6	M 10 x 1 keg	21	9,5	17	8	9	12	WE-LL-06-M 10x1-k
100	8	M 6 x 1 keg	23	11,5	20	8	12	14	WE-LL-08-M 6x1-k
100	8	M 8 x 1 keg	23	11,5	20	8	12	14	WE-LL-08-M 8x1-k
100	8	M 10 x 1 keg	23	11,5	20	8	12	14	WE-LL-08-M 10x1-k

Series L

315	6	M 10 x 1 keg	27	12,0	20	8	12	14	WE-L-06-M 10x1-k
315	8	M 12 x 1,5 keg	29	14,0	26	12	12	17	WE-L-08-M 12x1,5-k
315	10	M 12 x 1,5 keg	30	15,0	27	12	14	19	WE-L-10-M 12x1,5-k
315	10	M 14 x 1,5 keg	30	15,0	27	12	14	19	WE-L-10-M 14x1,5-k
315	10	M 16 x 1,5 keg	30	15,0	28	12	14	19	WE-L-10-M 16x1,5-k
315	12	M 14 x 1,5 keg	32	17,0	27	12	17	22	WE-L-12-M 14x1,5-k
315	12	M 16 x 1,5 keg	32	17,0	28	12	17	22	WE-L-12-M 16x1,5-k

315	15	M 18 x 1,5 keg	36	21,0	32	12	19	27	WE-L-15-M 18x1,5-k
315	18	M 22 x 1,5 keg	40	23,0	36	14	24	32	WE-L-18-M 22x1,5-k

Series S

630 **	6	M 12 x 1,5 keg	31	16,0	26	12	12	17	WE-S-06-M 12x1,5-k
630 **	8	M 14 x 1,5 keg	32	17,0	27	12	14	19	WE-S-08-M 14x1,5-k
630 **	10	M 16 x 1,5 keg	34	17,5	28	12	17	22	WE-S-10-M 16x1,5-k
630 **	12	M 18 x 1,5 keg	38	21,5	28	12	17	24	WE-S-12-M 18x1,5-k
630 **	14	M 20 x 1,5 keg	40	22,0	32	14	19	27	WE-S-14-M 20x1,5-k
630 **	16	M 22 x 1,5 keg	43	24,5	32	14	24	30	WE-S-16-M 22x1,5-k