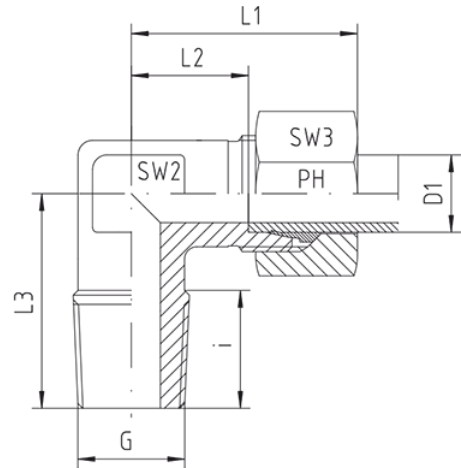
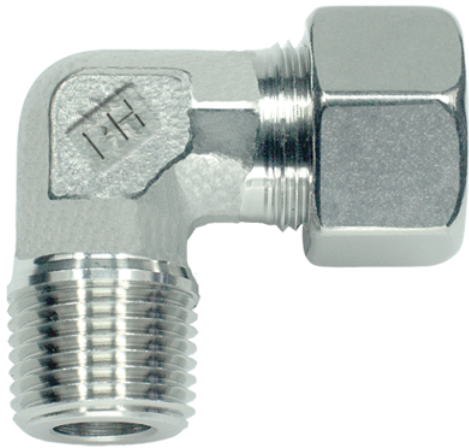


Rubrik 8.117

NPT - Standard



Stud Elbows S-Series Thread: NPT

Pressure	Tube O.D.	Thread	Approx. Dimensions						Order-Code
			PN	D1	G	L1	L2	L3	

Series S

630	6	1/4" NPT	31	16,0	26,0	15,0	12	17	WE-S-06-1/4"-NPT
630	6	3/8" NPT	32	17,5	29,0	15,3	14	17	WE-S-06-3/8"-NPT
630	6	1/2" NPT	36	21,0	34,0	20,0	17	17	WE-S-06-1/2"-NPT
630	8	1/4" NPT	32	17,0	27,0	15,0	14	19	WE-S-08-1/4"-NPT
630	8	3/8" NPT	33	18,0	28,0	15,3	14	19	WE-S-08-3/8"-NPT
630	8	1/2" NPT	38	23,0	34,0	20,0	17	19	WE-S-08-1/2"-NPT
630	10	1/4" NPT	34	17,5	28,0	15,0	17	22	WE-S-10-1/4"-NPT
630	10	3/8" NPT	34	17,5	28,0	15,3	17	22	WE-S-10-3/8"-NPT
630	10	1/2" NPT	39	22,5	32,0	20,0	17	22	WE-S-10-1/2"-NPT
630	12	1/4" NPT	38	21,5	29,0	15,0	17	24	WE-S-12-1/4"-NPT
630	12	3/8" NPT	38	21,5	28,0	15,3	17	24	WE-S-12-3/8"-NPT
630	12	1/2" NPT	39	21,5	32,5	20,0	17	24	WE-S-12-1/2"-NPT
630	14	3/8" NPT	40	22,0	30,0	15,3	19	27	WE-S-14-3/8"-NPT
630	14	1/2" NPT	40	22,0	34,0	20,0	19	27	WE-S-14-1/2"-NPT
400	16	3/8" NPT	43	24,5	32,0	15,3	24	30	WE-S-16-3/8"-NPT
400	16	1/2" NPT	43	24,5	36,0	20,0	24	30	WE-S-16-1/2"-NPT
400	16	3/4" NPT	43	24,5	41,0	20,0	24	30	WE-S-16-3/4"-NPT
400	20	1/2" NPT	48	26,5	42,0	20,0	27	36	WE-S-20-1/2"-NPT

400	20	3/4" NPT	48	26,5	42,0	20,0	27	36	WE-S-20-3/4"-NPT
400	25	1" NPT	54	30,0	48,0	25,0	36	46	WE-S-25-1"-NPT
400	30	1 1/4" NPT	62	35,5	54,0	25,5	41	50	WE-S-30-1 1/4"-NPT
315	38	1 1/2" NPT	72	41,0	61,0	26,0	50	60	WE-S-38-1 1/2"-NPT