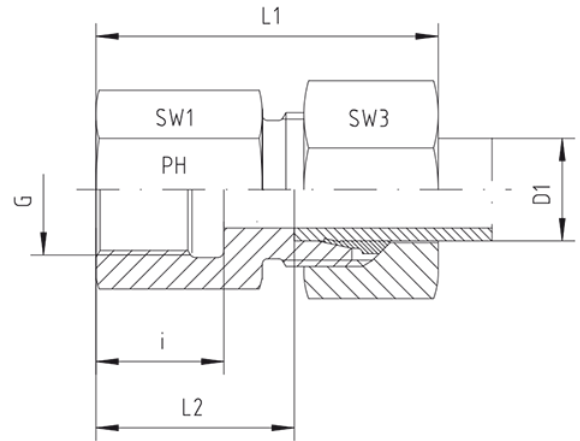
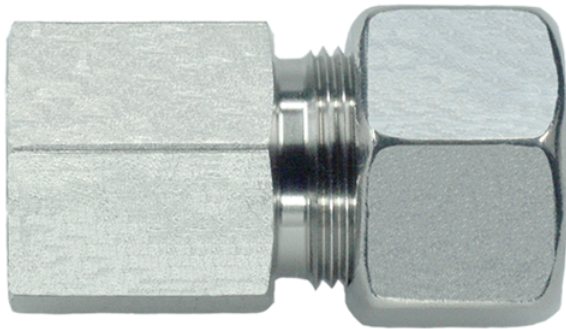


## Rubrik 8.172

### BSP - Parallel - Female - Standard



#### Female Stud Couplings Female Thread: BSP - Parallel

Pressure	Tube O.D.	Thread	Approx. Dimensions					Order-Code
			L1	L2	i	SW1	SW3	

#### Series S

PN	D1	G	L1	L2	i	SW1	SW3	
630	6	G 1/4"	42,0	26,0	17,0	19	17	GAI-S-06-G 1/4"
630	6	G 3/8"			17,0	24	17	GAI-S-06-G 3/8"
630	6	G 1/2"	48,0	31,0	20,0	27	17	GAI-S-06-G 1/2"
630	8	G 1/4"	43,0	26,0	17,0	19	19	GAI-S-08-G 1/4"
630	8	G 3/8"	44,0	27,0	17,0	24	19	GAI-S-08-G 3/8"
630	8	G 1/2"	48,0	31,0	20,0	27	19	GAI-S-08-G 1/2"
630	10	G 3/8"	45,0	26,5	17,0	24	22	GAI-S-10-G 3/8"
630	10	G 1/2"	49,5	30,5	20,0	27	22	GAI-S-10-G 1/2"
630	12	G 1/4"	46,0	27,5	17,0	22	24	GAI-S-12-G 1/4"
630	12	G 3/8"	45,0	26,5	17,0	24	24	GAI-S-12-G 3/8"
630	12	G 1/2"	50,0	30,5	20,0	27	24	GAI-S-12-G 1/2"
630	14	G 3/8"	50,0	30,0	17,0	24	27	GAI-S-14-G 3/8"
630	14	G 1/2"	52,0	32,0	20,0	27	27	GAI-S-14-G 1/2"
400	16	G 3/8"	48,0	26,5	17,5	27	30	GAI-S-16-G 3/8"
400	16	G 1/2"	53,0	31,5	20,0	27	30	GAI-S-16-G 1/2"
400	16	G 3/4"	55,0	34,5	22,0	36	30	GAI-S-16-G 3/4"
400	20	G 1/2"	57,0	32,5	20,0	32	36	GAI-S-20-G 1/2"
400	20	G 3/4"	60,0	34,5	22,0	36	36	GAI-S-20-G 3/4"

400	25	G 3/4"	60,0	35,0	22,0	41	46	GAI-S-25-G 3/4"
400	25	G 1"	66,5	37,5	24,5	41	46	GAI-S-25-G 1"
400	30	G 1 1/4"	72,5	42,0	26,5	55	50	GAI-S-30-G 1 1/4"
315	38	G 1 1/2"	79,5	43,5	28,5	60	60	GAI-S-38-G 1 1/2"