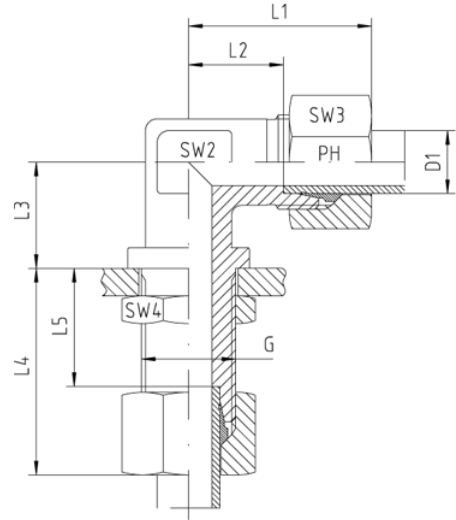
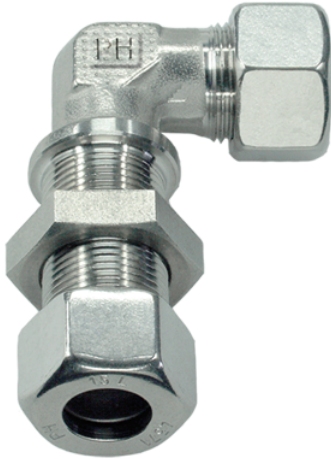


Rubrik 8.45

WSV - Bulkhead Elbows - Standard



Bulkhead Elbow Couplings

| Pressure | Tube O.D. | Thread | Approx. Dimensions | | | | | | | | Order-Code |
|-----------------|-----------|------------|--------------------|------|----|----|------|-----|-----|-----|------------|
| | | | L1 | L2 | L3 | L4 | L5 | SW2 | SW3 | SW4 | |
| PN | D1 | G | L1 | L2 | L3 | L4 | L5 | SW2 | SW3 | SW4 | |
| Series L | | | | | | | | | | | |
| 315 | 6 | M 12 x 1,5 | 27 | 12,0 | 14 | 42 | 27,0 | 12 | 14 | 17 | WSV-L-06 |
| 315 | 8 | M 14 x 1,5 | 29 | 14,0 | 17 | 42 | 27,0 | 12 | 17 | 19 | WSV-L-08 |
| 315 | 10 | M 16 x 1,5 | 30 | 15,0 | 18 | 43 | 28,0 | 14 | 19 | 22 | WSV-L-10 |
| 315 | 12 | M 18 x 1,5 | 32 | 17,0 | 20 | 44 | 29,0 | 17 | 22 | 24 | WSV-L-12 |
| 315 | 15 | M 22 x 1,5 | 36 | 21,0 | 23 | 46 | 31,0 | 19 | 27 | 30 | WSV-L-15 |
| 315 | 18 | M 26 x 1,5 | 40 | 23,0 | 24 | 49 | 32,5 | 24 | 32 | 36 | WSV-L-18 |
| 160 | 22 | M 30 x 2 | 44 | 27,0 | 30 | 51 | 34,5 | 27 | 36 | 41 | WSV-L-22 |
| 160 | 28 | M 36 x 2 | 47 | 30,0 | 34 | 52 | 35,5 | 36 | 41 | 46 | WSV-L-28 |
| 160 | 35 | M 45 x 2 | 56 | 34,0 | 39 | 58 | 36,5 | 41 | 50 | 55 | WSV-L-35 |
| 160 | 42 | M 52 x 2 | 63 | 40,0 | 43 | 59 | 36,0 | 50 | 60 | 65 | WSV-L-42 |
| Series S | | | | | | | | | | | |
| 630 | 6 | M 14 x 1,5 | 31 | 16,0 | 17 | 44 | 29,0 | 12 | 17 | 19 | WSV-S-06 |
| 630 | 8 | M 16 x 1,5 | 32 | 17,0 | 18 | 44 | 29,0 | 14 | 19 | 22 | WSV-S-08 |
| 630 | 10 | M 18 x 1,5 | 34 | 17,0 | 20 | 46 | 29,5 | 17 | 22 | 24 | WSV-S-10 |
| 630 | 12 | M 20 x 1,5 | 38 | 21,0 | 21 | 47 | 30,5 | 17 | 24 | 27 | WSV-S-12 |
| 630 | 14 | M 22 x 1,5 | 40 | 22,0 | 23 | 50 | 32,0 | 19 | 27 | 30 | WSV-S-14 |
| 400 | 16 | M 24 x 1,5 | 43 | 24,0 | 24 | 50 | 31,5 | 24 | 30 | 32 | WSV-S-16 |

| | | | | | | | | | | | |
|-----|----|----------|----|------|----|----|------|----|----|----|----------|
| 400 | 20 | M 30 x 2 | 48 | 26,0 | 30 | 55 | 33,5 | 27 | 36 | 41 | WSV-S-20 |
| 400 | 25 | M 36 x 2 | 54 | 30,0 | 34 | 59 | 35,0 | 36 | 46 | 46 | WSV-S-25 |
| 400 | 30 | M 42 x 2 | 62 | 35,5 | 39 | 64 | 37,5 | 41 | 50 | 50 | WSV-S-30 |
| 315 | 38 | M 52 x 2 | 72 | 41,0 | 43 | 68 | 37,0 | 50 | 60 | 65 | WSV-S-38 |