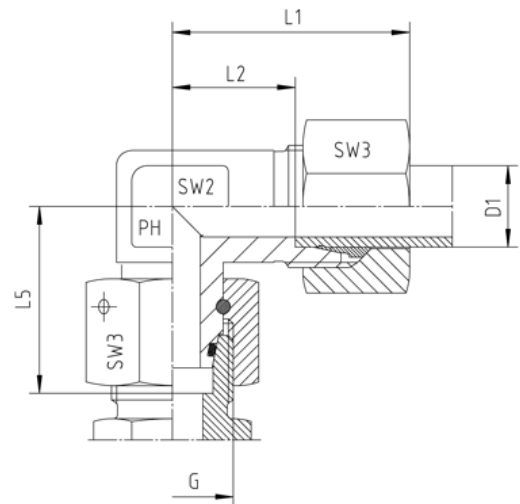
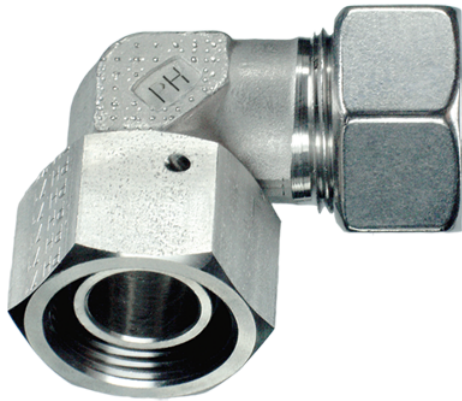


Rubrik 9.11

Adjustable Stud Elbows - Standard



With Taper and O-ring - FKM Cutting Ring Connection at the Tube Connection side

Pressure	Tube O.D.	Thread	Approx. Dimensions					Order-Code
			D1	G	L1	L2	L5	

Series L

500	6	M 12 x 1,5	27	12,0	26,0	12	14	EW-DKOL-06
500	8	M 14 x 1,5	29	14,0	27,5	12	17	EW-DKOL-08
500	10	M 16 x 1,5	30	15,0	29,0	14	19	EW-DKOL-10
400	12	M 18 x 1,5	32	17,0	29,5	17	22	EW-DKOL-12
400	15	M 22 x 1,5	36	21,0	32,5	19	27	EW-DKOL-15
400	18	M 26 x 1,5	40	23,5	35,5	24	32	EW-DKOL-18
250	22	M 30 x 2	44	27,5	38,5	27	36	EW-DKOL-22
250	28	M 36 x 2	47	30,5	41,5	36	41	EW-DKOL-28
250	35	M 45 x 2	56	34,5	51,0	41	50	EW-DKOL-35
250	42	M 52 x 2	63	40,0	56,0	50	60	EW-DKOL-42

Series S

800	6	M 14 x 1,5	31	16,0	27,0	12	17	EW-DKOS-06
800	8	M 16 x 1,5	32	17,0	27,5	14	19	EW-DKOS-08
800	10	M 18 x 1,5	34	17,5	30,0	17	22	EW-DKOS-10
630	12	M 20 x 1,5	38	21,5	31,0	17	24	EW-DKOS-12
630	14	M 22 x 1,5	40	22,0	35,0	19	27	EW-DKOS-14
630	16	M 24 x 1,5	43	24,5	36,5	24	30	EW-DKOS-16

420	20	M 30 x 2	48	26,5	44,5	27	36	EW-DKOS-20
420	25	M 36 x 2	54	30,0	50,0	36	46	EW-DKOS-25
420	30	M 42 x 2	62	35,5	55,0	41	50	EW-DKOS-30
420	38	M 52 x 2	72	41,0	63,0	50	60	EW-DKOS-38