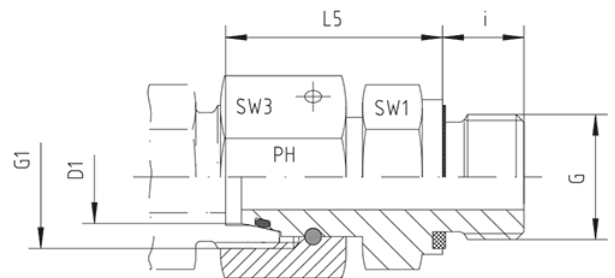
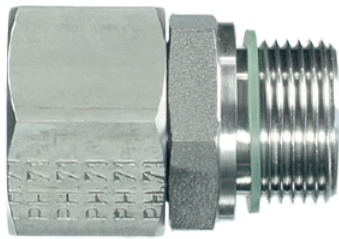


Rubrik 9.48

Metric - Parallel



With Taper and O-ring - FKM For Type of Port End W DIN 3861 Thread: Metric - Parallel wd = Sealing by an Elastomer Profiled Ring - FKM

Pressure	Tube O.D.		Thread		Approx. Dimensions				Order-Code
	PN	D1	G	G1	L5	i	SW1	SW3	

Series L

500	6	M 10 x 1	M 12 x 1,5	24,5	8	14	14	EGE-DKOL-06-M 10x1-wd
500	8	M 12 x 1,5	M 14 x 1,5	26,5	12	17	17	EGE-DKOL-08-M 12x1,5-wd
500	10	M 14 x 1,5	M 16 x 1,5	27,5	12	19	19	EGE-DKOL-10-M 14x1,5-wd
400	12	M 16 x 1,5	M 18 x 1,5	30,5	12	22	22	EGE-DKOL-12-M 16x1,5-wd
400	15	M 18 x 1,5	M 22 x 1,5	31,5	12	24	27	EGE-DKOL-15-M 18x1,5-wd
400	18	M 22 x 1,5	M 26 x 1,5	31,5	14	27	32	EGE-DKOL-18-M 22x1,5-wd
250	22	M 26 x 1,5	M 30 x 2	32,5	16	32	36	EGE-DKOL-22-M 26x1,5-wd
250	28	M 33 x 2	M 36 x 2	35,0	18	41	41	EGE-DKOL-28-M 33x2-wd
250	35	M 42 x 2	M 45 x 2	42,5	20	50	50	EGE-DKOL-35-M 42x2-wd
250	42	M 48 x 2	M 52 x 2	46,5	22	55	60	EGE-DKOL-42-M 48x2-wd

Series S

800	6	M 12 x 1,5	M 14 x 1,5	27,0	12	17	17	EGE-DKOS-06-M 12x1,5-wd
800	8	M 14 x 1,5	M 16 x 1,5	29,5	12	19	19	EGE-DKOS-08-M 14x1,5-wd
800	10	M 16 x 1,5	M 18 x 1,5	32,0	12	22	22	EGE-DKOS-10-M 16x1,5-wd
630	12	M 18 x 1,5	M 20 x 1,5	34,0	12	24	24	EGE-DKOS-12-M 18x1,5-wd
630	14	M 20 x 1,5	M 22 x 1,5	36,5	14	27	27	EGE-DKOS-14-M 20x1,5-wd
630	16	M 22 x 1,5	M 24 x 1,5	37,0	14	27	30	EGE-DKOS-16-M 22x1,5-wd

420	20	M 27 x 2	M 30 x 2	43,0	16	32	36	EGE-DKOS-20-M 27x2-wd
420	25	M 33 x 2	M 36 x 2	48,0	18	41	46	EGE-DKOS-25-M 33x2-wd
420	30	M 42 x 2	M 42 x 2	51,0	20	50	50	EGE-DKOS-30-M 42x2-wd
420	38	M 48 x 2	M 52 x 2	60,0	22	55	60	EGE-DKOS-38-M 48x2-wd