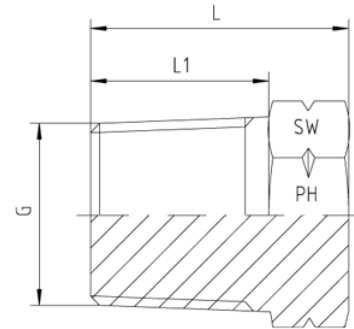
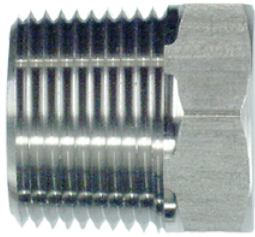


Rubrik 5.58

NPT - Male



NPT - Male

Pressure	Thread	Approx. Dimensions			Order-Code
		L	L1	SW	
PN	G = NPT				
630	1/8"-27	15	10,0	12	5280010-02
630	1/4"-18	20	15,0	14	5280010-04
630	3/8"-18	22	15,3	17	5280010-06
630	1/2"-14	27	20,0	22	5280010-08
630	3/4"-14	29	20,0	27	5280010-12
400	1"-11,5	33	25,0	36	5280010-16
400	1 1/4"-11,5	33	25,5	46	5280010-20
400	1 1/2"-11,5	41	26,0	50	5280010-24
315	2"-11,5	44	26,0	65	5280010-32