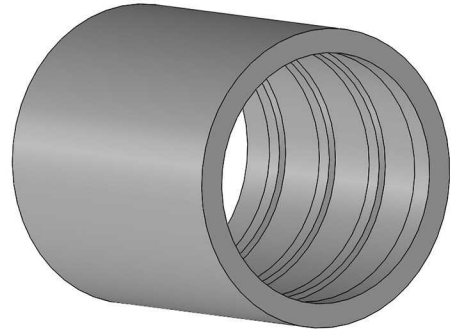
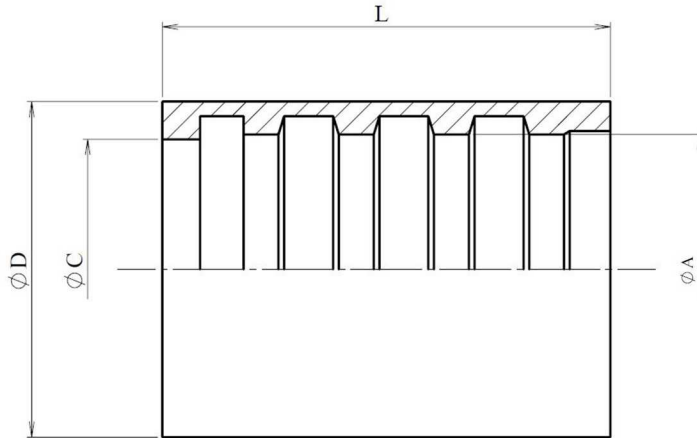


**Ferrules for Smooth PTFE SAE 100 R14**

Mild Steel 1.0737 (EN 10.277-3)



Part n°	DN	L	ØA	ØC	ØD
<b>210400100</b>	1/8"	17,5	8	7	12
<b>210400300</b>	3/16"	26	10	8,8	14
<b>210400400</b>	1/4"	30	11	10,7	15
<b>210400500</b>	5/16"	30	13,5	12,8	17
<b>210400600</b>	3/8"	30	14	14	18
<b>210400800</b>	1/2"	32	19,3	18,6	24
<b>210401000</b>	5/8"	36	22	21,5	28
<b>210401200</b>	3/4"	40	24,9	24,4	30
<b>210401600</b>	1"	50	30,3	30,3	36