

**DOUBLE ACTING CYLINDERS**



**LARZEP advantages**

- Capacity from 10 to 550 Tn, stroke up to 300 mm as standard.
- For push and pull applications.
- For heavy duty applications, high precision and involving high cycle life.
- Guide and sealing system of highest quality.
- Internal safety valve to prevent accidental over-pressure.
- Collar threads, piston end threads and base mounting holes for easy fixing and pull operations.
- Compatible with SM accessories.
- Longer stroke models up to 1.500 mm upon request.

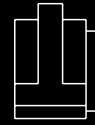
Carefully read and understand the safety instructions.



Special attachments for SM and D models.



DOUBLE ACTING CYLINDERS



D

10-550 Tn.

700 bar

CYLINDERS



Larzep designs and manufactures special cylinders up to 1.500 mm stroke upon request.



Larzep designs and manufactures Pin Pushers upon request.



Double Acting Hollow Piston Cylinders, DH.

Page. 64



Double Acting High Tonnage Cylinders, DDR.

Page. 68



Aluminium Double Acting Cylinder, DDA.

Page. 60



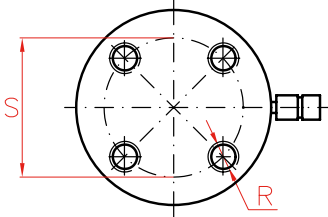
Fittings and Manifolds.

Page. 114

Larzep designs and manufactures special cylinders up to 1.500 mm stroke upon request.



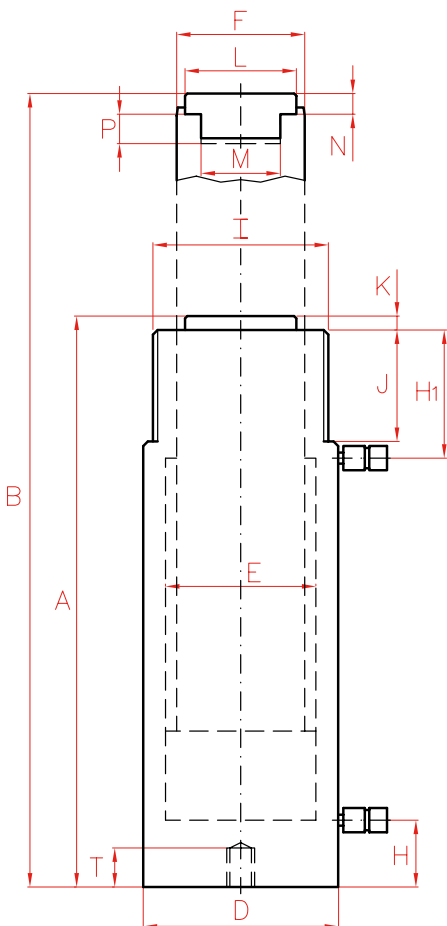
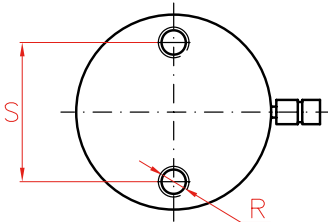
**Models from 50 to 550 Tn.**



Pressure Gauges.

Page. 116

**Models up to 30 Tn.**



Capacity Tn	Stroke mm	Model LARZEP	Capacity (kN)		Oil Cap. cm³	A mm	B mm	D mm	E mm	F mm	
			Push	Pull							
10	160	D01016	109	20	255	310	470	60	45	36	
	250	D01025	109	20	398	400	650	60	45	36	
	320	D01032	109	20	509	470	790	60	45	36	
20	160	D02016	214	53	499	320	480	83	63	45	
	250	D02025	214	53	779	410	660	83	63	45	
	320	D02032	214	53	997	480	800	83	63	45	
30	160	D03016	303	68	707	335	495	100	75	56	
	320	D03032	303	68	1.413	495	815	100	75	56	
50	160	D05016	486	72	1.134	335	495	127	95	80	
	320	D05032	486	72	2.267	510	830	127	95	80	
75	160	D07516	712	140	1.661	338	498	150	115	90	
	320	D07532	712	140	3.322	512	832	150	115	90	
100	160	D10016	911	189	2.123	339	499	177	130	100	
	320	D10032	911	189	4.245	509	829	177	130	100	
150	50	D15005	1.380	370	1.005	258	308	215	160	110	
	150	D15015	1.380	370	3.015	378	528	215	160	110	
	300	D15030	1.380	370	6.029	528	828	215	160	110	
200	50	D20005	2.156	560	1.570	274	324	265	200	140	
	150	D20015	2.156	560	4.710	394	544	265	200	140	
	300	D20030	2.156	560	9.420	544	844	265	200	140	
350	50	D35005	3.368	1.014	2.454	299	349	330	250	160	
	150	D35015	3.368	1.014	7.359	419	569	330	250	160	
	300	D35030	3.368	1.014	14.718	569	869	330	250	160	
550	50	D55005	5.519	1.714	4.020	383	433	430	320	200	
	150	D55015	5.519	1.714	12.058	518	668	430	320	200	
	300	D55030	5.519	1.714	24.116	668	968	430	320	200	



Flow Control Valves.

Page. 110



Quick Couplers.

Page. 108



Double Acting Hand Pumps, X.

Page. 80



Optional Tilting Saddle.

Page. 112

	H	H1	I	J	K	L	M	N	P	R	S	T	Area	Weight	Model	With tilting saddle	
	mm	mm	UN	mm	mm	mm	UN	mm	mm	UN	mm	mm	cm <sup>2</sup>	kg	LARZEP	A	Model
	20	53,5	2 1/4"-14	32	7	28	1"-8	10	24	5/16"-18	39	12	16	6,4	<b>D01016</b>	329	AZ0420
	20	53,5	2 1/4"-14	32	7	28	1"-8	10	24	5/16"-18	39	12	16	8,0	<b>D01025</b>	419	AZ0420
	20	53,5	2 1/4"-14	32	7	28	1"-8	10	24	5/16"-18	39	12	16	9,5	<b>D01032</b>	489	AZ0420
	20	60	3 1/4"-12	40	8	35	1"-8	8	24	1/2"-13	58	15	31	11,7	<b>D02016</b>	341	AZ0423
	20	60	3 1/4"-12	40	8	35	1"-8	8	24	1/2"-13	58	15	31	14,5	<b>D02025</b>	431	AZ0423
	20	60	3 1/4"-12	40	8	35	1"-8	8	24	1/2"-13	58	15	31	16,8	<b>D02032</b>	501	AZ0423
	26	77	3 7/8"-12	48	10	45	1 1/2"-16	10	25	1/2"-13	66	15	44	18,9	<b>D03016</b>	353	AZ0421
	26	77	3 7/8"-12	48	10	45	1 1/2"-16	10	25	1/2"-13	66	15	44	26,6	<b>D03032</b>	513	AZ0421
	28	70	5"-12	50	10	61	1 3/4"-12	10	25	1/2"-13	95	15	71	30,8	<b>D05016</b>	363	AZ0422
	28	85	5"-12	50	10	61	1 3/4"-12	10	25	1/2"-13	95	15	71	44,8	<b>D05032</b>	538	AZ0422
	30	70	5 3/4"-12	50	10	61	1 3/4"-12	10	25	1/2"-13	100	18	104	42,0	<b>D07516</b>	366	AZ0422
	30	80	5 3/4"-12	50	10	61	1 3/4"-12	10	25	1/2"-13	100	18	104	60,6	<b>D07532</b>	540	AZ0422
	38	70	6 7/8"-12	50	10	88	1 3/4"-12	16	30	3/4"-10	139	18	133	51,8	<b>D10016</b>	361	AZ0422
	38	84	6 7/8"-12	50	10	88	1 3/4"-12	16	30	3/4"-10	139	18	133	84,1	<b>D10032</b>	531	AZ0422
	49	85	8"-12	55	10	88	2 1/2"-12	15	40	3/4"-16	158	25	201	66,0	<b>D15005</b>	279	AZ0424
	49	85	8"-12	55	10	88	2 1/2"-12	15	40	3/4"-16	158	25	201	90,0	<b>D15015</b>	410	AZ0424
	49	85	8"-12	55	10	88	2 1/2"-12	15	40	3/4"-16	158	25	201	119,0	<b>D15030</b>	560	AZ0424
	65	85	9 3/4"-12	55	10	111	2 1/2"-12	19	60	1"-8	127	25	314	105,0	<b>D20005</b>	307	AZ0425
	65	85	9 3/4"-12	55	10	111	2 1/2"-12	19	60	1"-8	127	25	314	151,0	<b>D20015</b>	427	AZ0425
	65	85	9 3/4"-12	55	10	111	2 1/2"-12	19	60	1"-8	127	25	314	191,0	<b>D20030</b>	577	AZ0425
	85	90	12 1/4"-12	60	10	131	3"-12	15	70	1 1/4"-7	158	40	491	189,0	<b>D35005</b>	-	-
	85	90	12 1/4"-12	60	10	131	3"-12	15	70	1 1/4"-7	158	40	491	247,0	<b>D35015</b>	-	-
	85	90	12 1/4"-12	60	10	131	3"-12	15	70	1 1/4"-7	158	40	491	346,0	<b>D35030</b>	-	-
	110	120	15 5/8"-8	80	15	178	4"-12	26	85	1 3/4"-5	203	55	804	396,0	<b>D55005</b>	-	-
	110	120	15 5/8"-8	80	15	178	4"-12	26	85	1 3/4"-5	203	55	804	504,0	<b>D55015</b>	-	-
	110	120	15 5/8"-8	80	15	178	4"-12	26	85	1 3/4"-5	203	55	804	625,0	<b>D55030</b>	-	-