

SPLIT-FLOW POWERPACKS



LARZEP advantages

- Simultaneous lifting system to power 2, 4, 6 or 8 single or double acting cylinders.
- Remote pendant allows independent control of the lifting or lowering.
- Simultaneous lifting with less than 2% flow difference between outlets.
- Manual directional control valves (HFM versions) or remote pendant controlled solenoid valves (HFE versions).
- Suitable for most of the applications where a uniform lifting is required. Maximum gap around 1mm.
- HFE solenoid valve powerpacks are supplied with a remote pendant with 5 metre cable.
- Options: roll bars, oil cooler, wheel kit and remote control, to motor control (HFM).



Hoses.

Page. 106



Quick couplers.

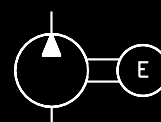
Page. 108



Directional Control Valves.

Page. 117

SPLIT-FLOW POWERPACKS



HFM
HFE

PUMPS

50-150 litres

700 bar



Synchronized Lifting Systems, HAS.

Page. 94

Carefully read and understand the safety instructions.



HFM (MANUAL VALVE)

50-60 Hz 3 phase							
Outlets	Tank	Flow at 700 bar	230 V		400/415 V		Power
No.	l	l/min	Single/A	Double/A	Single/A	Double/A	kW
2	50	0,60	HFM22622	HFM22642	HFM22624	HFM22644	3,0
		0,76	HFM23622	HFM23642	HFM23624	HFM23644	4,0
	100	0,60	HFM22722	HFM22742	HFM22724	HFM22744	3,0
		0,76	HFM23722	HFM23742	HFM23724	HFM23744	4,0
	150	0,60	HFM22822	HFM22842	HFM22824	HFM22844	3,0
		0,76	HFM23822	HFM23842	HFM23824	HFM23844	4,0
4	100	0,34	HFM41722	HFM41742	HFM41724	HFM41744	2,2
		0,60	HFM42722	HFM42742	HFM42724	HFM42744	3,0
		0,76	HFM43722	HFM43742	HFM43724	HFM43744	4,0
		0,94	HFM44722	HFM44742	HFM44724	HFM44744	5,5
		2,10	HFM45722	HFM45742	HFM45724	HFM45744	11,0
	150	0,34	HFM41822	HFM41842	HFM41824	HFM41844	2,2
		0,60	HFM42822	HFM42842	HFM42824	HFM42844	3,0
		0,76	HFM43822	HFM43842	HFM43824	HFM43844	4,0
		0,94	HFM44822	HFM44842	HFM44824	HFM44844	5,5
		2,10	HFM45822	HFM45842	HFM45824	HFM45844	11,0
6	100	0,34	HFM61722	HFM61742	HFM61724	HFM61744	3,0
		0,60	HFM62722	HFM62742	HFM62724	HFM62744	5,5
		0,76	HFM63722	HFM63742	HFM63724	HFM63744	7,5
	150	0,34	HFM61822	HFM61842	HFM61824	HFM61844	3,0
		0,60	HFM62822	HFM62842	HFM62824	HFM62844	5,5
		0,76	HFM63822	HFM63842	HFM63824	HFM63844	7,5
8	150	0,60	HFM82822	HFM82842	HFM82824	HFM82844	7,5
		0,94*	HFM84822	HFM84842	HFM84824	HFM84844	7,5

* Maximum working pressure 450 bar



Remote Pendant in HFE

- Allows the individual or simultaneous movement of each cylinder when lifting or lowering.
- Advance/retract switch selects the position of the solenoid valves in HFE.
- Individual buttons for each cylinder to operate them independently or at the same time in HFE.
- Simultaneous button moves all the jacks at the same time in HFE.
- To improve the control over lowering of the cylinders it is highly recommended to use AZ5255 lowering valves.
- Can also be supplied with independent remote pendants for each exit in HFE.
- To make the retraction of single acting spring return cylinders easier, once the lifting is completed and the cylinders are not under load, a switch in the electric box allows automatic retraction of the cylinder.

HFE (SOLENOID VALVE)

50-60 Hz 3 phase							
Outlets	Tank	Flow at 700 bar	230 V		400/415 V		Power
No.	l	l/min	Single/A	Double/A	Single/A	Double/A	kW
2	50	0,60	HFE22662	HFE22672	HFE22664	HFE22674	3,0
		0,76	HFE23662	HFE23672	HFE23664	HFE23674	4,0
	100	0,60	HFE22762	HFE22772	HFE22764	HFE22774	3,0
		0,76	HFE23762	HFE23772	HFE23764	HFE23774	4,0
	150	0,60	HFE22862	HFE22872	HFE22864	HFE22874	3,0
		0,76	HFE23862	HFE23872	HFE23864	HFE23874	4,0
4	100	0,34	HFE41762	HFE41772	HFE41764	HFE41774	2,2
		0,60	HFE42762	HFE42772	HFE42764	HFE42774	3,0
		0,76	HFE43762	HFE43772	HFE43764	HFE43774	4,0
		0,94	HFE44762	HFE44772	HFE44764	HFE44774	5,5
		2,10	HFE45762	HFE45772	HFE45764	HFE45774	11,0
	150	0,34	HFE41862	HFE41872	HFE41864	HFE41874	2,2
		0,60	HFE42862	HFE42872	HFE42864	HFE42874	3,0
		0,76	HFE43862	HFE43872	HFE43864	HFE43874	4,0
		0,94	HFE44862	HFE44872	HFE44864	HFE44874	5,5
		2,10	HFE45862	HFE45872	HFE45864	HFE45874	11,0
6	100	0,34	HFE61762	HFE61772	HFE61764	HFE61774	3,0
		0,60	HFE62762	HFE62772	HFE62764	HFE62774	5,5
		0,76	HFE63762	HFE63772	HFE63764	HFE63774	7,5
	150	0,34	HFE61862	HFE61872	HFE61864	HFE61874	3,0
		0,60	HFE62862	HFE62872	HFE62864	HFE62874	5,5
		0,76	HFE63862	HFE63872	HFE63864	HFE63874	7,5
8	150	0,60	HFE82862	HFE82872	HFE82864	HFE82874	7,5
		0,94*	HFE84862	HFE84872	HFE84864	HFE84874	7,5

* Maximum working pressure 450 bar