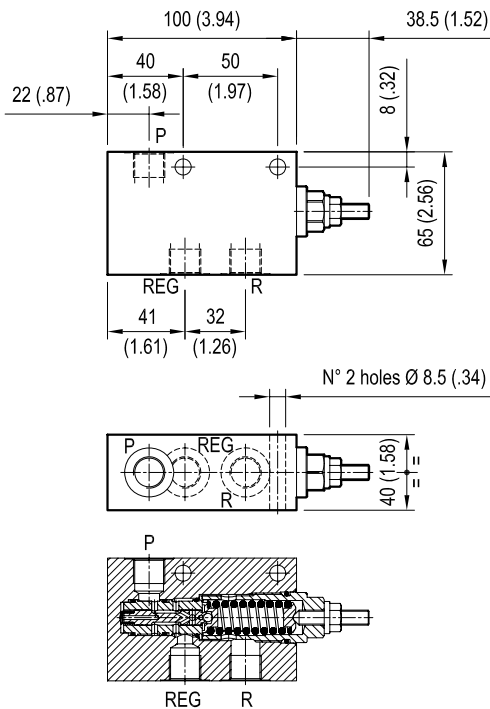


PRESSURE REDUCING AND RELIEVING, DIRECT ACTING SPOOL TYPE

VRP-R

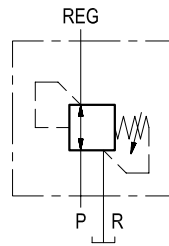
05.90.27 - X - Y - Z



P = Inlet
REG = A (Reduced pressure)
R = T (Tank)

[mm (inches)]

Initially, flow passes freely from P to REG. When the pressure at REG exceeds the pressure setting, the valve acts to restrict input flow at P. This increases the pressure drop through the valve and maintains consistent pressure at REG. The spring chamber is drained to prevent a build-up of back-pressure against the spool. Additionally, if pressure at REG rises above the pressure setting, flow is relieved to R (Tank) until the setting is re-attained.



P = Inlet
REG = A (Reduced pressure)
R = T (Tank)

TECHNICAL DATA

Max. operating pressure: 210 bar (3000 psi)

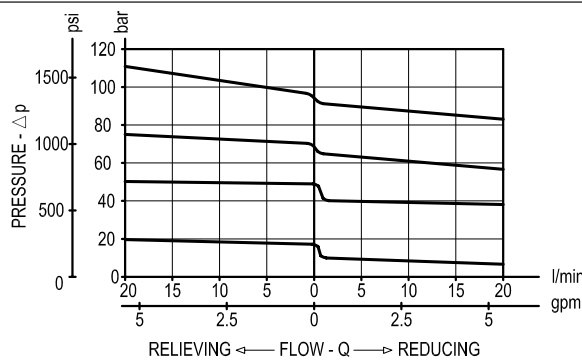
Max flow: 20 l/min (5 gpm)

Aluminium body

NOTE: aluminium bodies are often strong enough for operating pressures exceeding 210 bar (3000 psi), depending from the fatigue life expected in the specific application. If in doubt, consult our Service Network.

Weight: 0.85 kg (1.9 lbs)

Max leakage: 10 cc/min (0.6 in³/min) at 90% of pressure setting.



X

ADJUSTMENTS

03

Leakproof hex. socket screw



Z	SPRINGS				
	Adj. press. range bar (psi)	Pres. increase bar/turn (psi/turn)	Std. setting bar (psi) Q=5 l/min		
02	2-21 (30-305)	3 (44)	10 (145)		
04	3-42 (44-610)	5 (73)	20 (290)		
06	7-63 (102-914)	8 (116)	30 (435)		
10	11-105 (160-1525)	13 (189)	50 (725)		

Y

PORT SIZE

P - R - REG

02

G 3/8