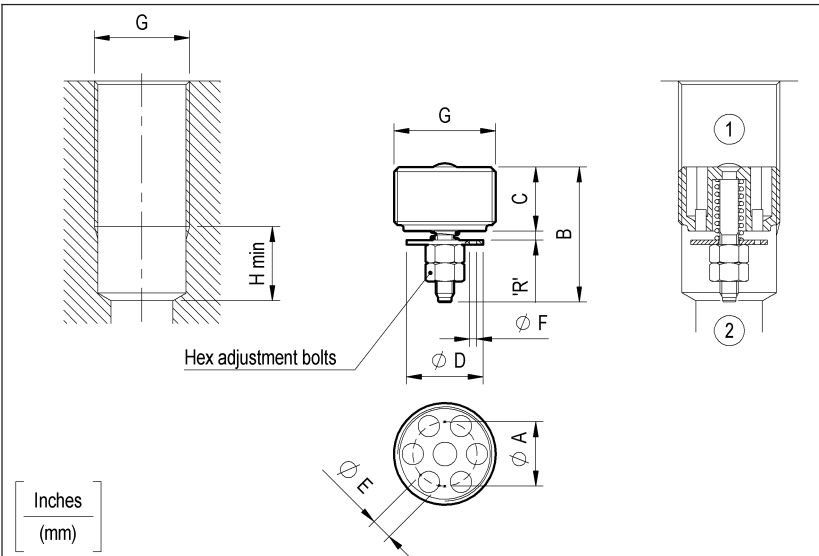


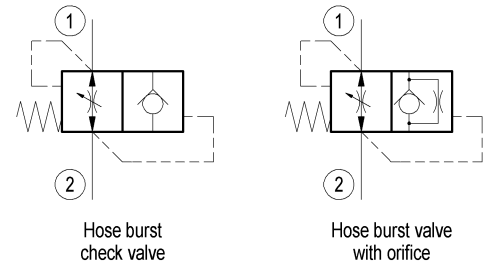
VPN1

OT.F4.01 - X - Y - Z



G	A	B	C	D	E	F	H	Hex	Weight	Inst. torque	Flow	
											min	max
G 1/4	.34 (8.5)	.69 (17.5)	.32 (8)	.37 (9.5)	.1 (2.4)	on request	.43 (11)	.22 (5.5)	0.011 lbs 0.005 Kg	1.5 ft-lb 2 Nm	1 gpm 4 l/min	7 gpm 25 l/min
G 3/8	.41 (10.5)	.91 (23)	.41 (10.5)	.49 (12.5)	.14 (3.5)	on request	.43 (11)	.22 (5.5)	0.022 lbs 0.010 Kg	2 ft-lb 3 Nm	2 gpm 6 l/min	13 gpm 50 l/min
G 1/2	.51 (13)	.98 (25)	.47 (12)	.59 (15)	.18 (4.5)	on request	.59 (15)	.28 (7)	0.044 lbs 0.020 Kg	3 ft-lb 4 Nm	4 gpm 16 l/min	21 gpm 80 l/min
G 3/4	.63 (16)	1.2 (30.5)	.67 (17)	.71 (18)	.24 (6)	on request	.63 (16)	.28 (7)	0.093 lbs 0.042 Kg	7 ft-lb 10 Nm	7 gpm 25 l/min	40 gpm 150 l/min

When the lowering speed exceeds preset value, as it might happen in case of hose failure, the flow is blocked. These valves should ideally be screwed directly into the actuator outlet port. Sealing parts are superfinished and enable to lock the load in the position where the actuator is in the moment of hose failure. These valves can be supplied, on request, with an orifice on the disc, allowing an emergency lowering of the load. It is recommended to fit a flow regulator valve downstream the hose burst valve, at the end of the flexible hose, to control the lowering speed at the nominal value. The "R" gap must be adjusted to allow a flow at least 50% over the nominal regulated flow from the actuator.



TECHNICAL DATA

Max. pressure: 4500 psi (315 bar)

Flow: see below graphs ('R'-Q)

Special flow settings available. Please contact factory authorized representative for ordering code.

Note: on request are available as "in line mounted sleeves type configuration". Please contact factory for any information.

The valve is only supposed to be operated in case of hose failure. Should this circumstance occur, we strongly recommend to verify the integrity of the valve and eventually to replace it in the event that the pressure spike generated by the hose failure was such to damage permanently some valve components.

ADJUSTMENTS

03 Locking nut + counter nut see graphs ('R' - Q)

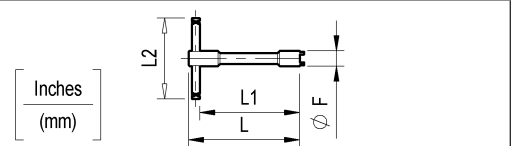
PORTS

09	G 1/4
02	G 3/8
03	G 1/2
04	G 3/4

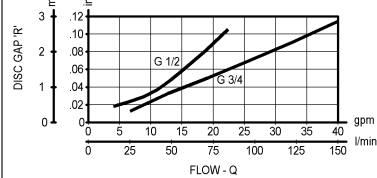
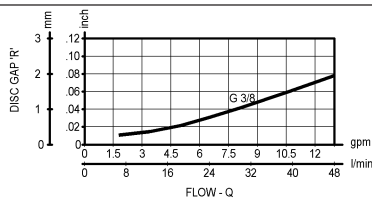
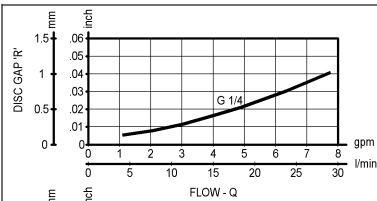
ORIFICE DIAMETER (mm)

00	no orifice	06	1
01	0.5	07	1.2
02	0.6	08	1.3
03	0.7	09	1.5
04	0.8	10	1.9
05	0.9	11	2

FITTING TOOL DIMENSION



Type	F	L	L1	L2	Tool's ordering code
VPN1.G14	.45 (11.3)	4.72 (120)	4.33 (110)	2.36 (60)	AVA18
VPN1.G38	.59 (15)	4.72 (120)	4.25 (108)	3.15 (80)	AVA18-01
VPN1.G12	.74 (18.8)	4.72 (120)	4.25 (108)	3.15 (80)	AVA18-02
VPN1.G34	.95 (24)	4.72 (120)	4.25 (108)	3.15 (80)	AVA18-03



Performance curves R/flow (allowance can be ±10% from the curve)
After assembling the valves are preadjusted at the following values
0.5 mm for G 1/4 and G 3/8
0.7 mm for G 1/2 and G 3/4

Flow performance from '1' to '2' depending on R-length

